

# 2nd Edition Drawing on the Land: Contemporary Landscape Architecture Exhibition Submissions



Daniel Roehr - Landscape 1



Daniel Roehr - Landscape 2



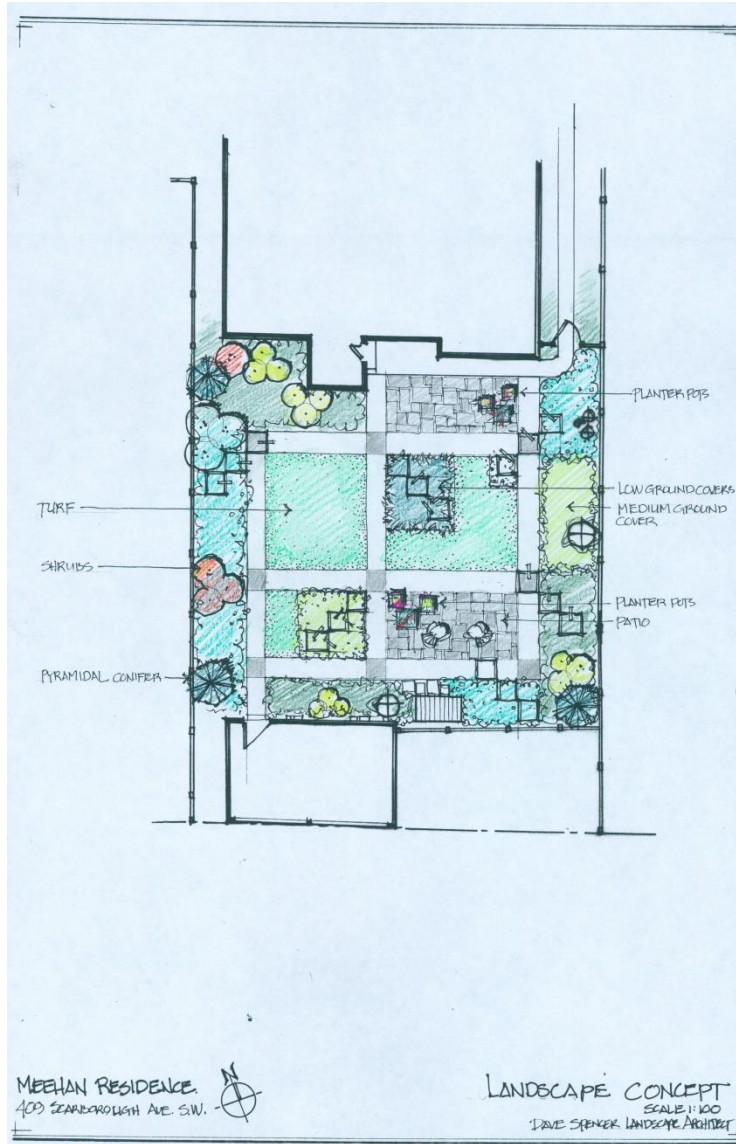
Daniel Roehr - Landscape 3



Daniel Roehr - Landscape 4



Daniel Roehr - Landscape 5

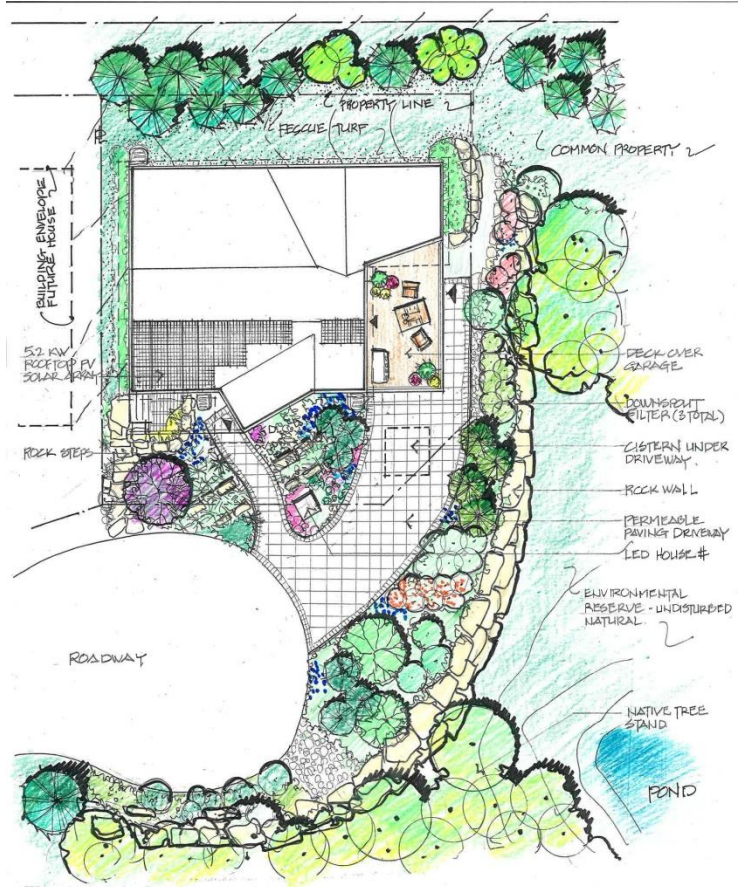


Dave Spencer - Meehan Residence Plan



Dave Spencer - Meehan Residence Sketch





LANDSCAPE LEGEND

- 
 SMALL ORNAMENTAL TREES 12-14' MATURE HT.  
 - CRABAPPLE  
 - HANNUKARH
- 
 NATIVE CONIFERS 30' MATURE HT.  
 - COLORADO SPRUCE  
 - LODGEPOLE PINE
- 
 NATIVE SHRUBS & PERENNIALS 1-5' HT.  
 EVERGREEN AND DECIDUOUS  
 30 NATIVE SPECIES

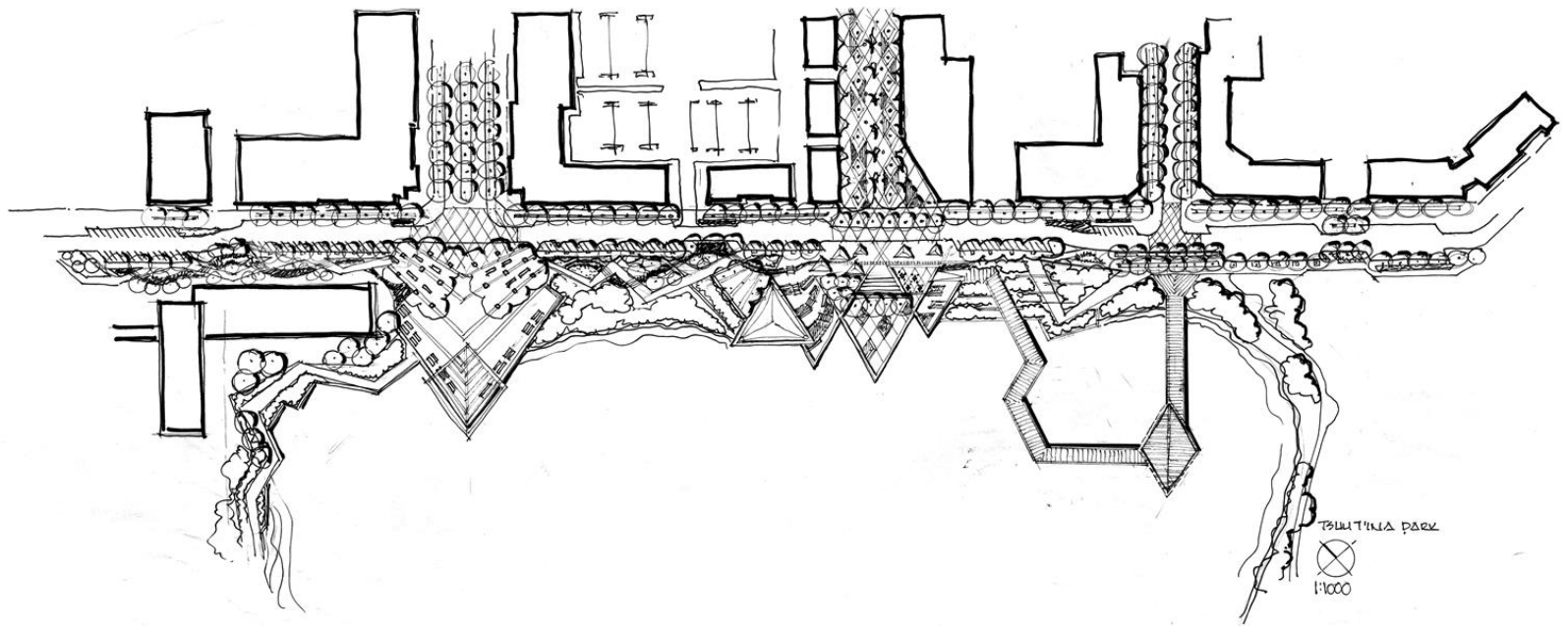
SITE PLAN SCALE 1:125  
 33 ROCKHAVEN GREEN N.W.  
 CALGARY ALBERTA  
 LOT 28 PLAN 8810907

LOT AREA 3000 SQ FT.  
 HOLD LOT COVERAGE 1731 SQ FT.

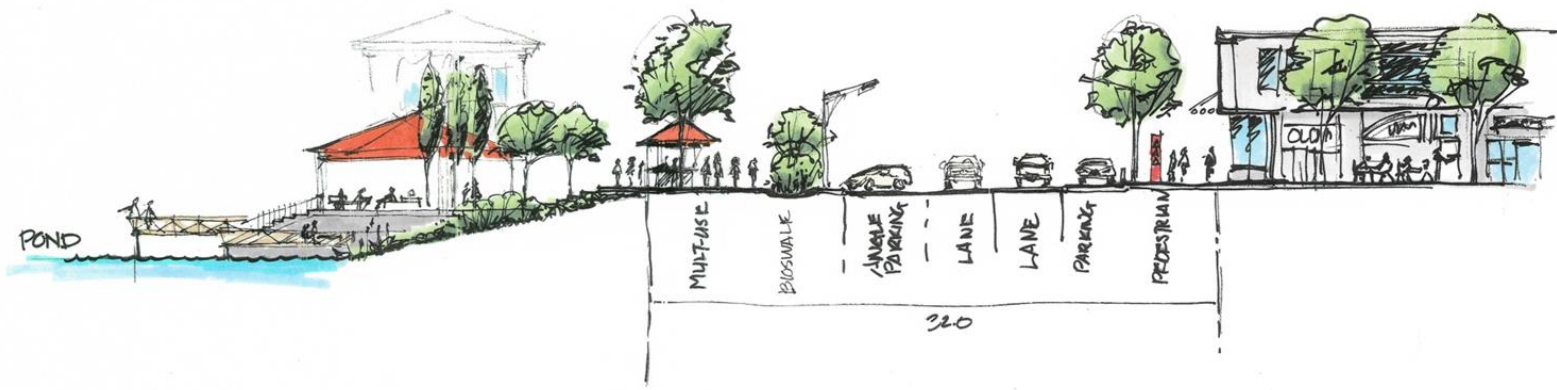


DAVE SPENCER LANDSCAPE ARCHITECT  
 AALA BCALA

Dave Spencer - Net Zero Residence

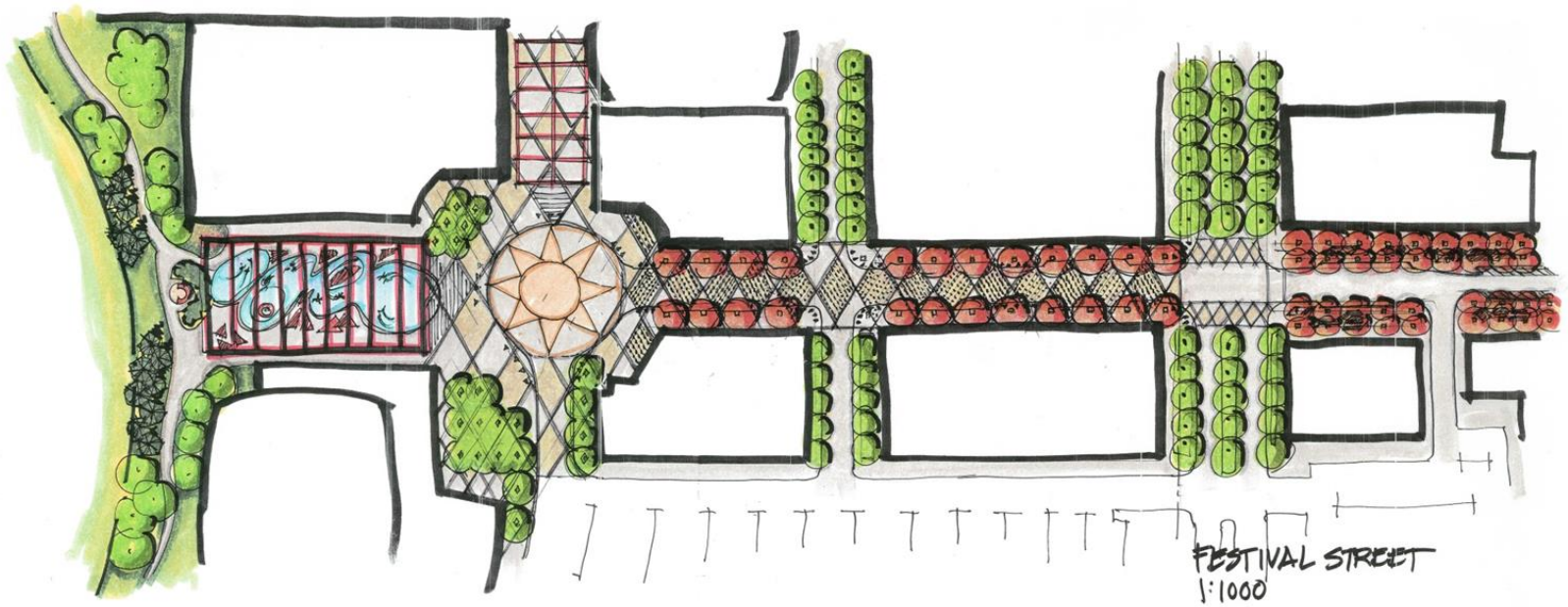


Dave Spencer - Tsuut'ina Commercial Development 1-1

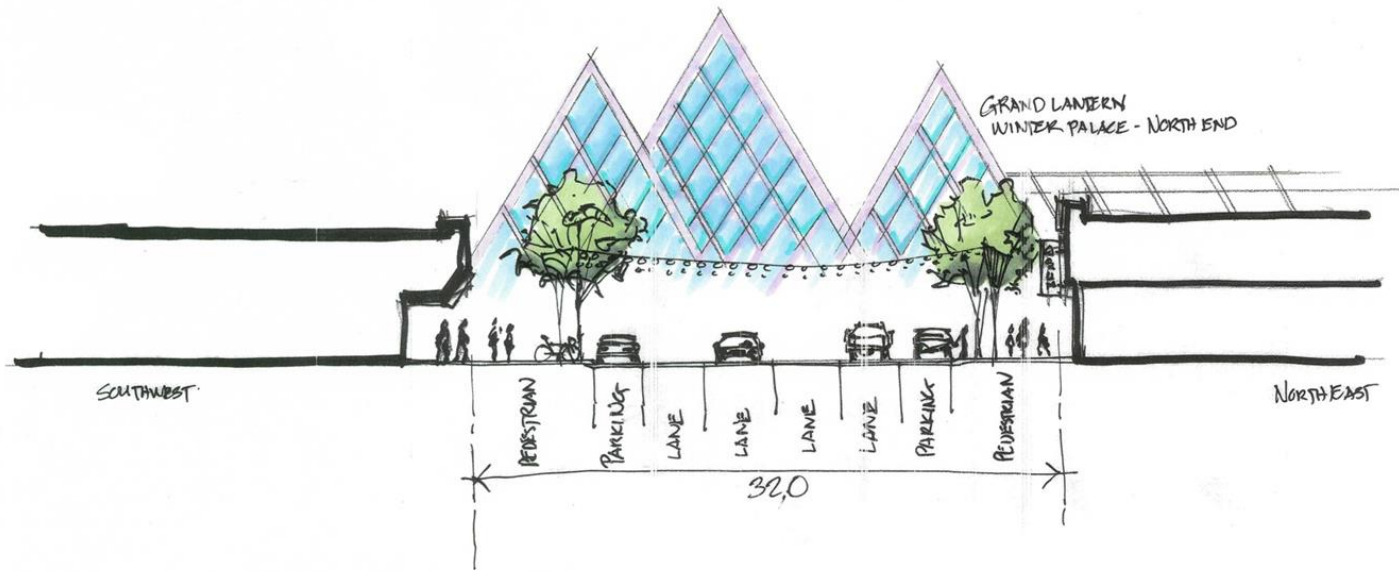


1:200

Dave Spencer - TsuuT'ina Commercial Development 1-2

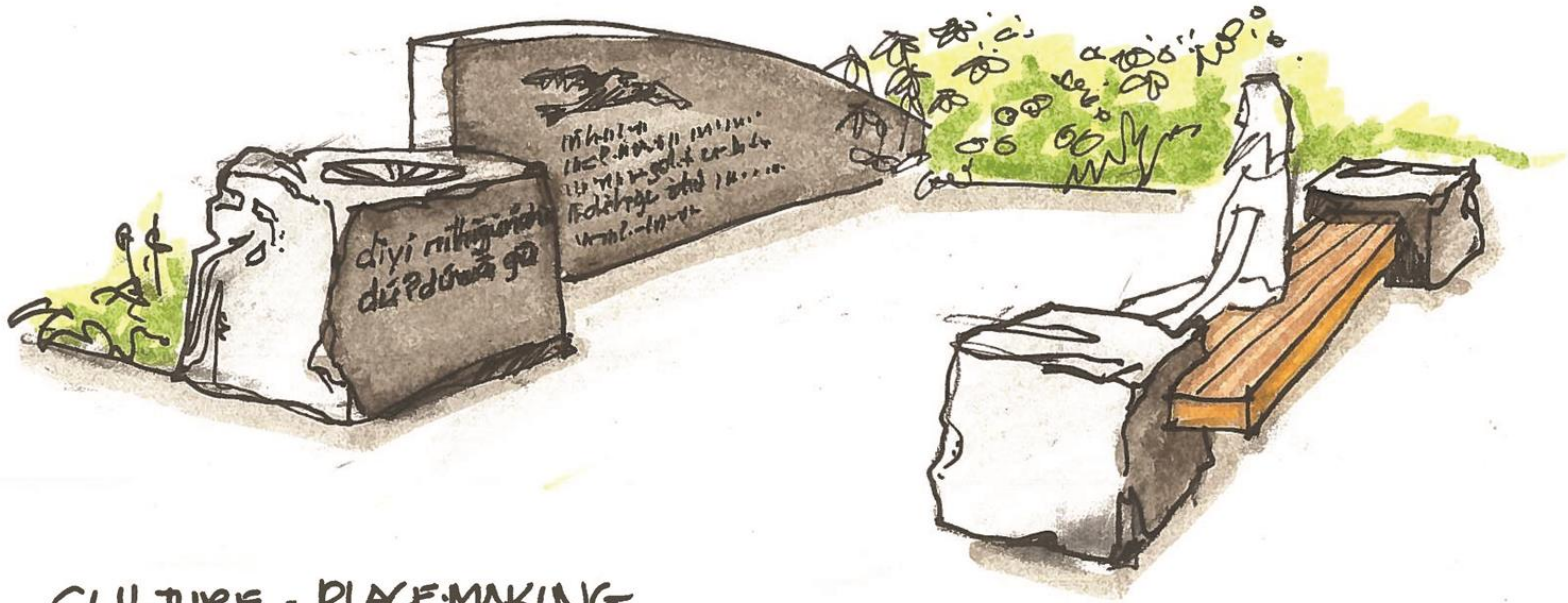


Dave Spencer - TsuuT'ina Commercial Development 1-3



FESTIVAL STREET  
1:20000

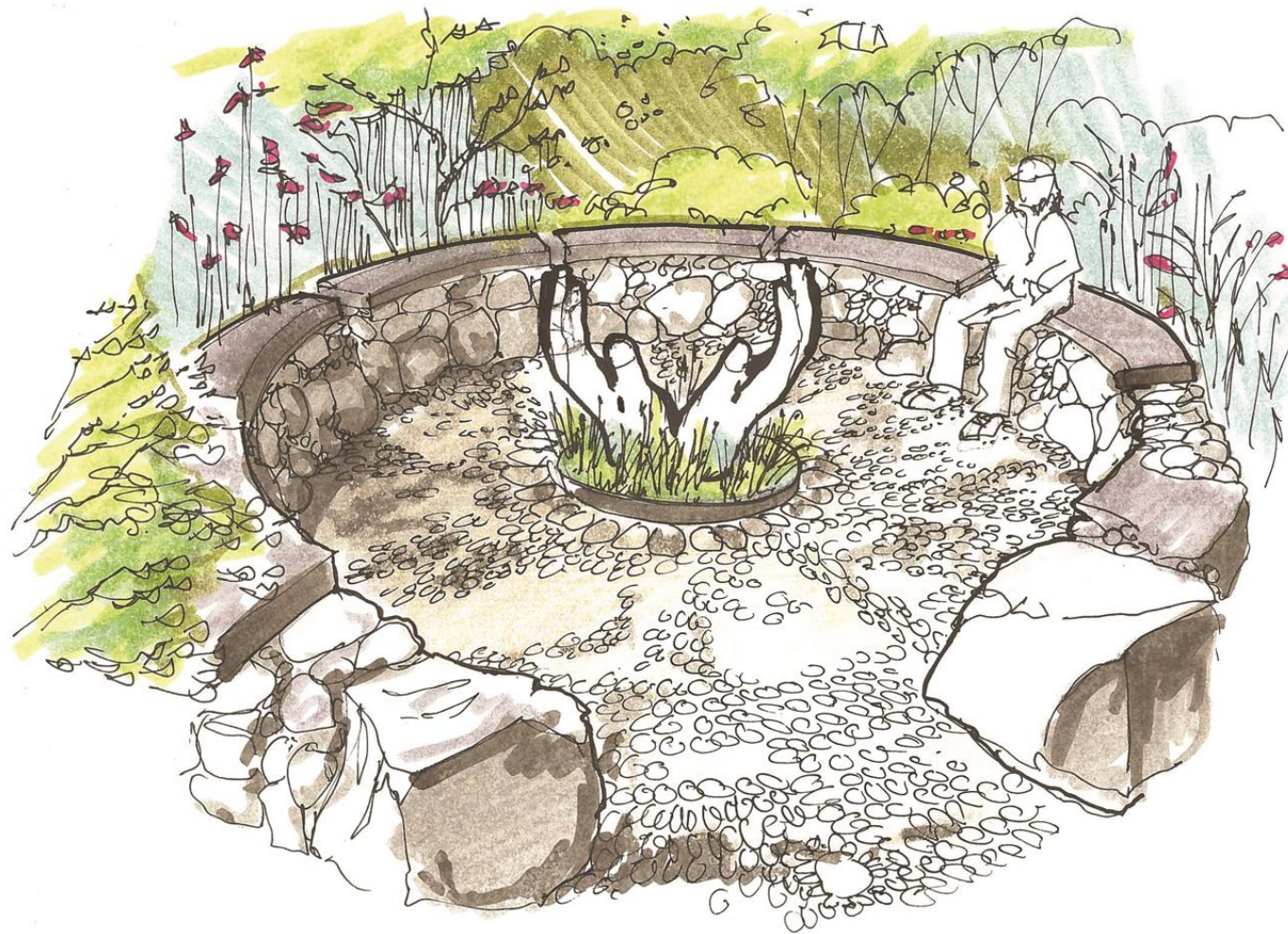
Dave Spencer - TsuuT'ina Commercial Development 1-4



CULTURE - PLACE-MAKING  
interpretive  
language  
story-telling

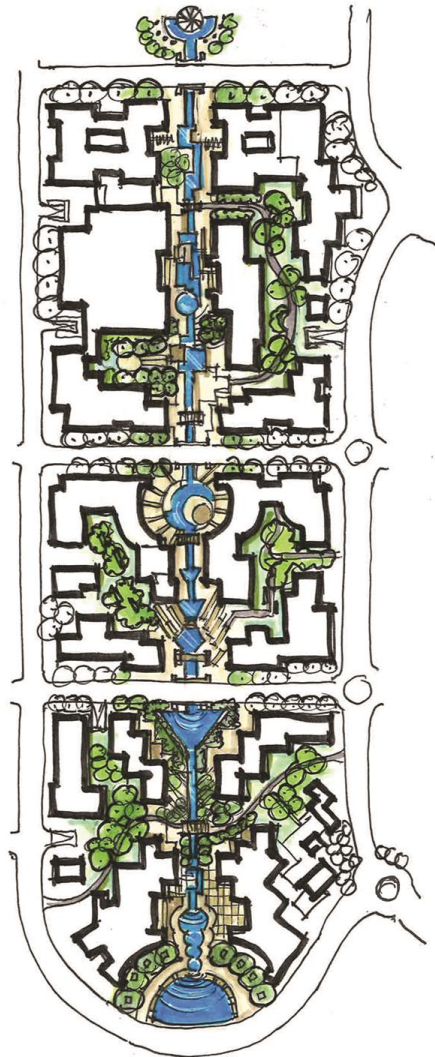


UNIVERSAL  
CONNECTION WITH NATURE  
INTERPRETIVE OPPORTUNITIES

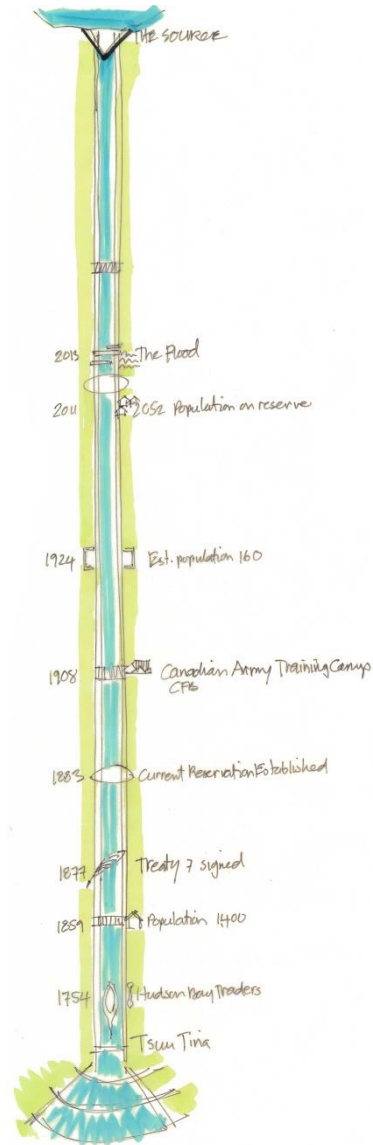


Dave Spencer - TsuuT'ina Commercial Development 2-4





Dave Spencer - TsuuT'ina Commercial  
Development 3-1



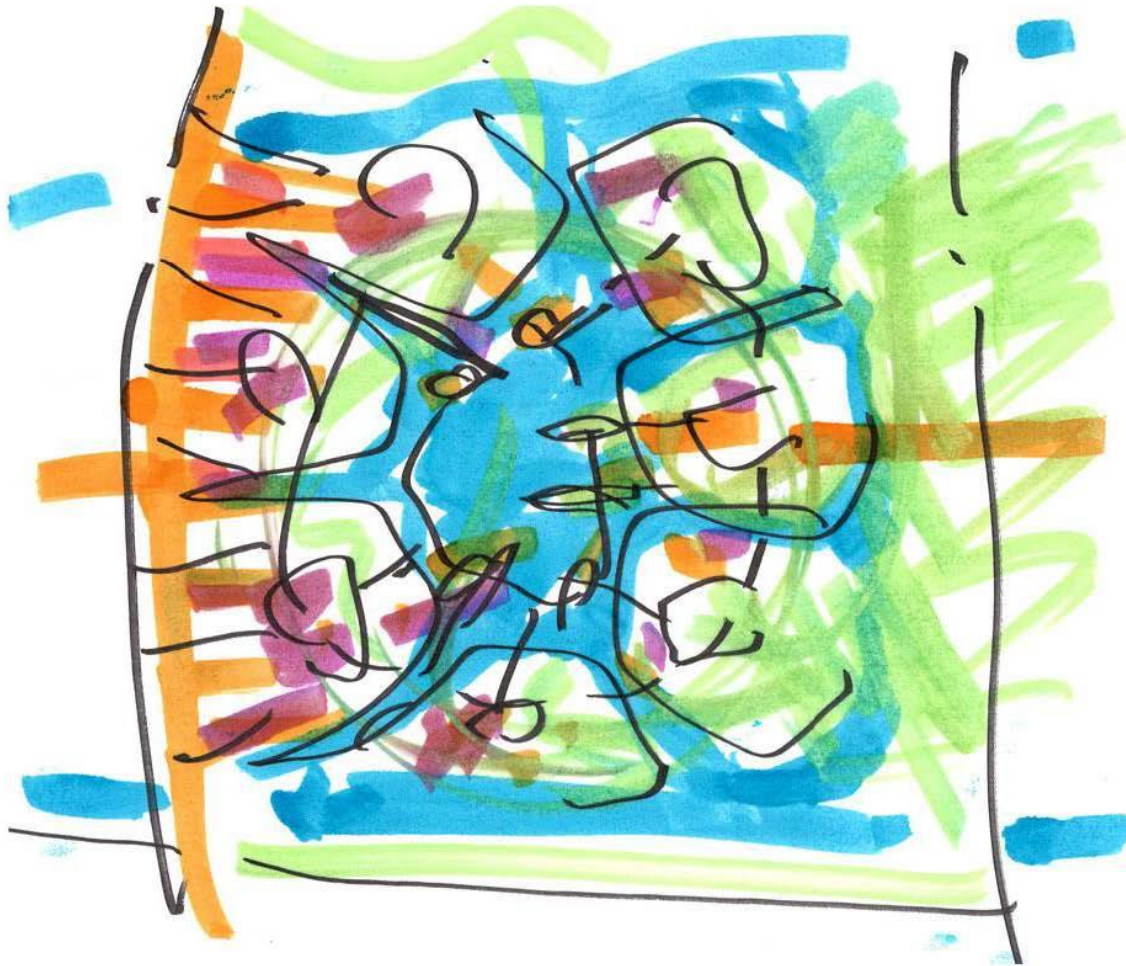
Dave Spencer - TsuuTina  
Commercial Development



Dave Spencer - Visualisation of Alpine Landscape - Vicenzino Residence



**LARGE EVENT SPACE**  
**PARK**  
• FESTIVALS  
• MARKET  
• PERFORMANCE



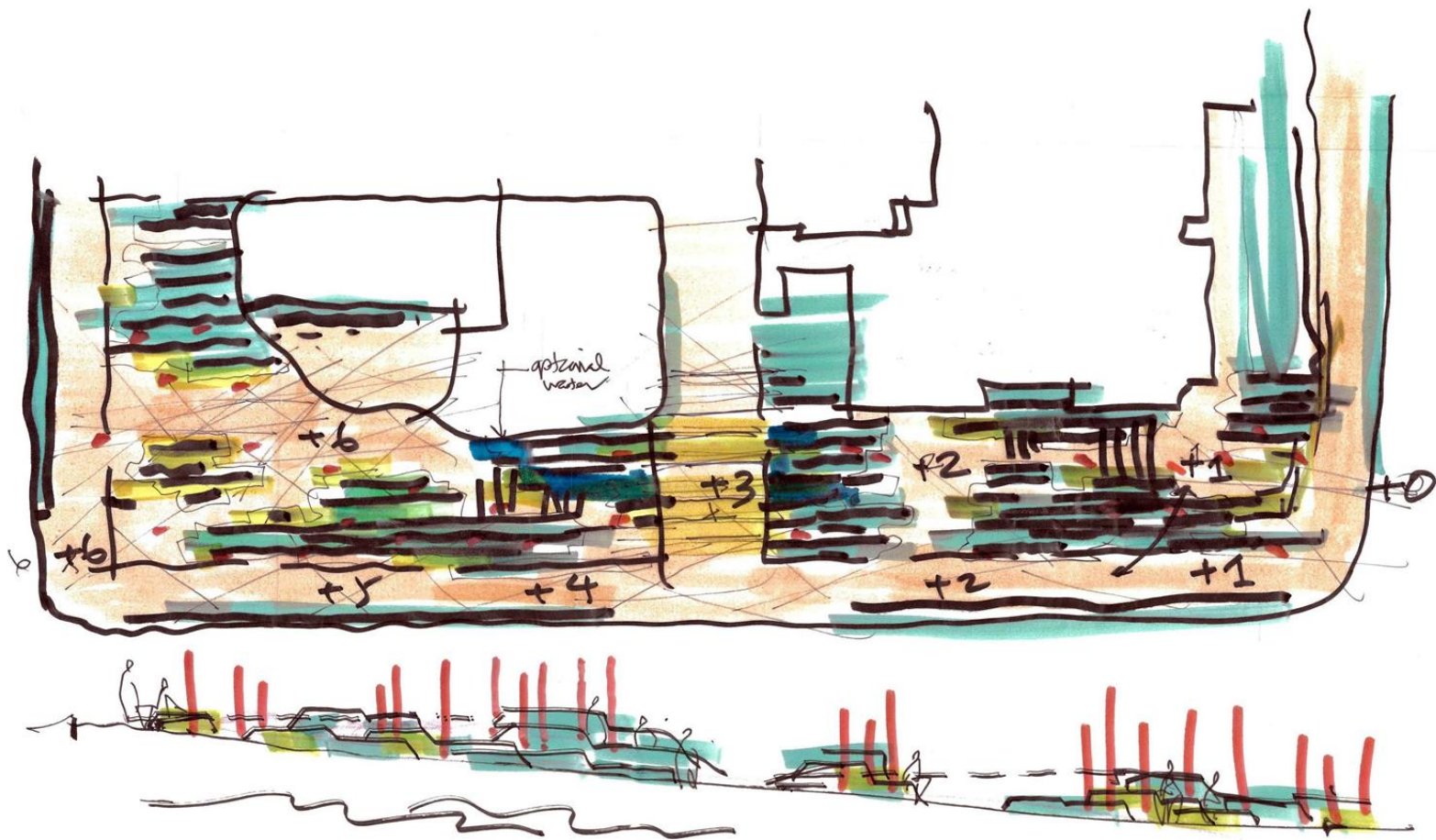
The Big Idea: Landscape informing the building siting, Gao Qiao Community Ph 1, Shanghai, Eddie Wu (B I H)

Eddie Wu – The Big Idea: Landscape informing the building siting



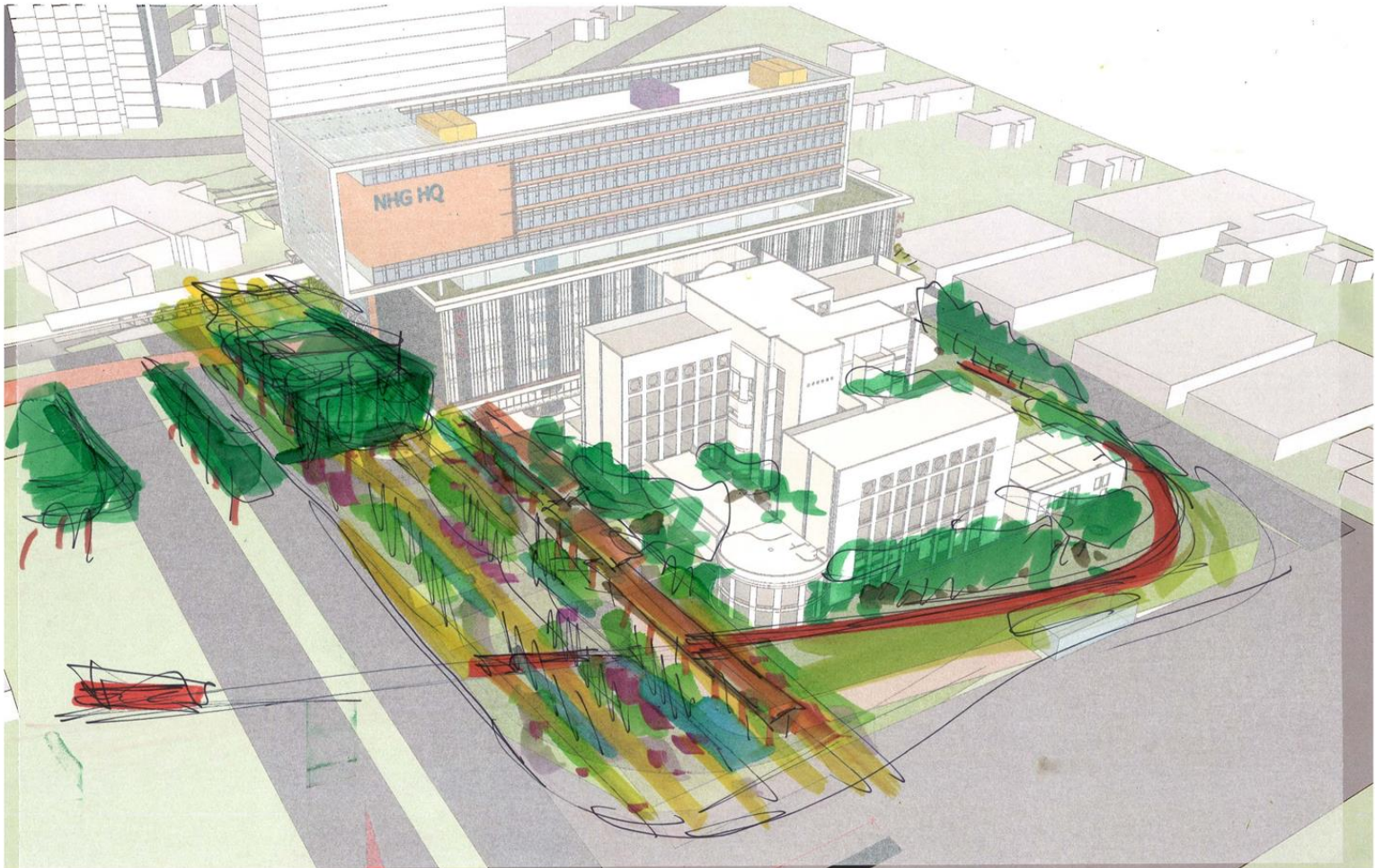
The Concept Process, Sheikha Fathima Park, Abu Dhabi, Eddie Wu (B+H)

Eddie Wu – The Concept Process



Initial Concept Study: Emotional Flow, 601 W Hastings, Vancouver, Eddie Wu (B+H)

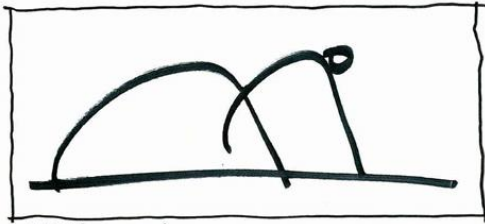
Eddie Wu – Initial Concept Study: Emotional Flow



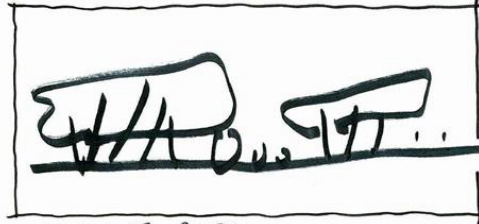
The 1<sup>st</sup> Sketch, National Skin Centre & National Healthcare Group HQ, Singapore, Eddie Wu (B+H)

Eddie Wu – The 1<sup>st</sup> Sketch





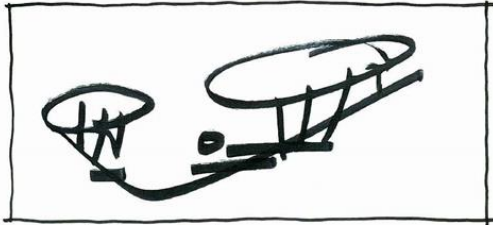
Hilltop park



Central Forest Park



Forest Buffer



Hillside creek



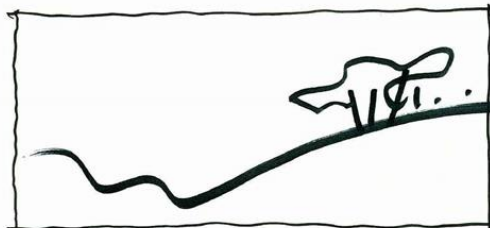
Linear water park



Neighbourhood Park



Urban Promenade

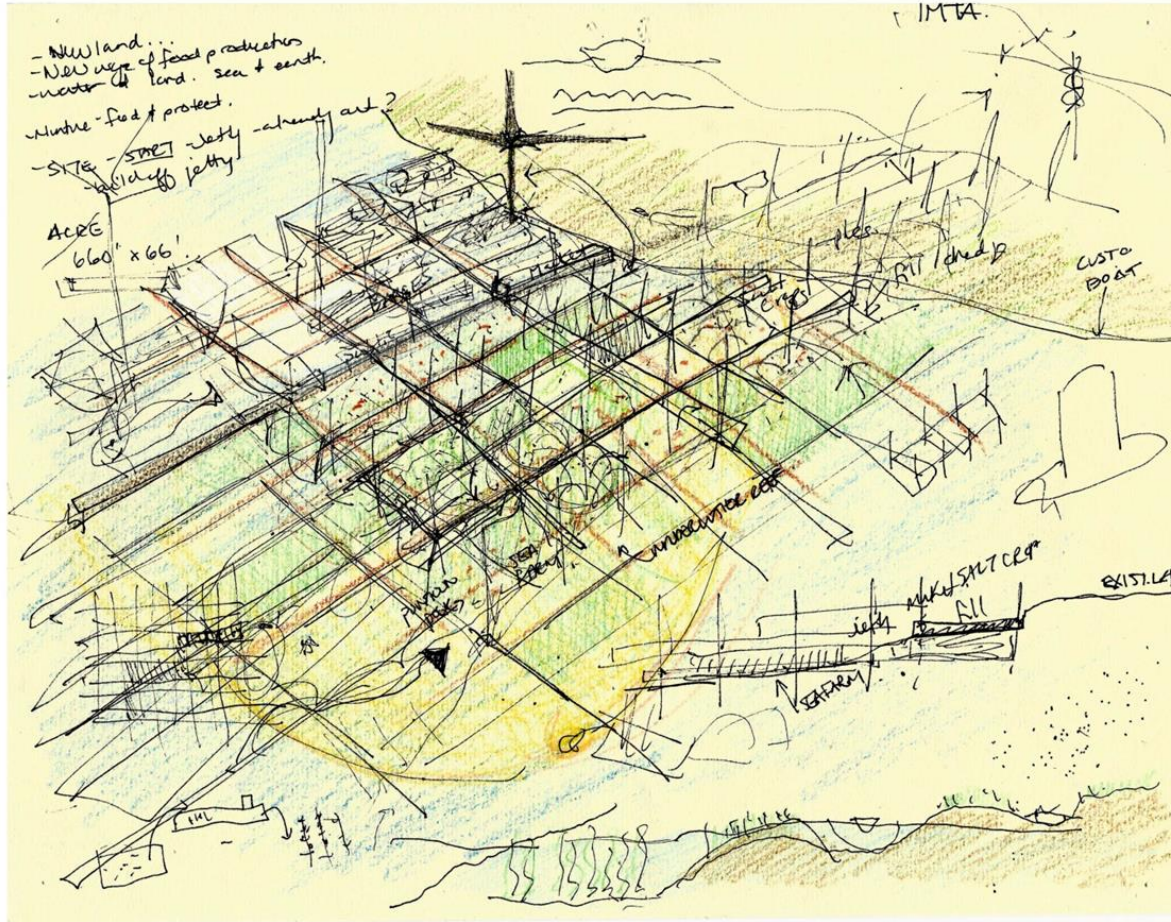


Sun Park

Navi Mumbai  
open space hierarchy  
& naming  
→ character zones.

Concept Icons: Neighbourhood Character & Identity Zones, Navi Mumbai Community Master Plan, Mumbai, Eddie Wu (B+H)

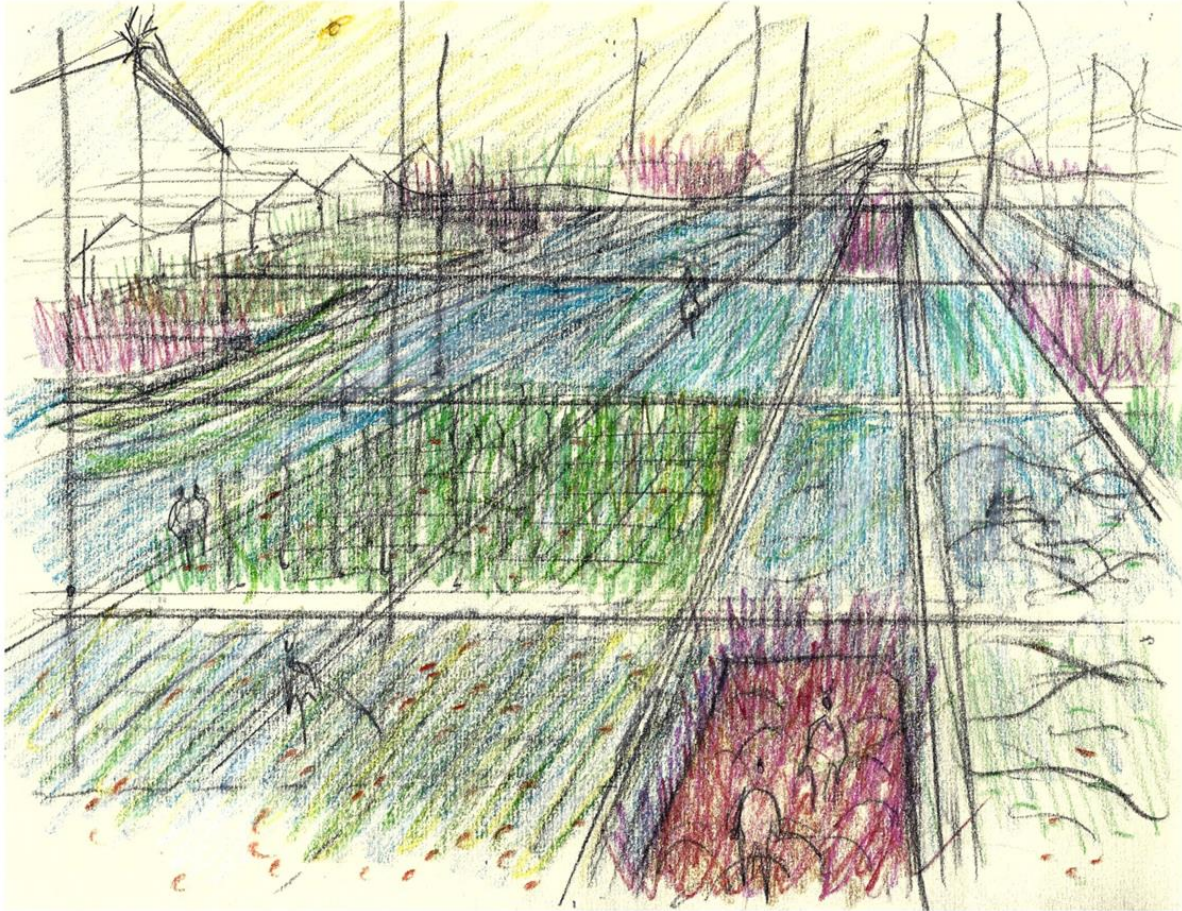
Eddie Wu – Concept Icons: Neighbourhood Identity & Character Zones



Jaclyn Kaloczi - Concept Sketch - Infrastructure for Futuristic Floating Aquaculture Farms 1



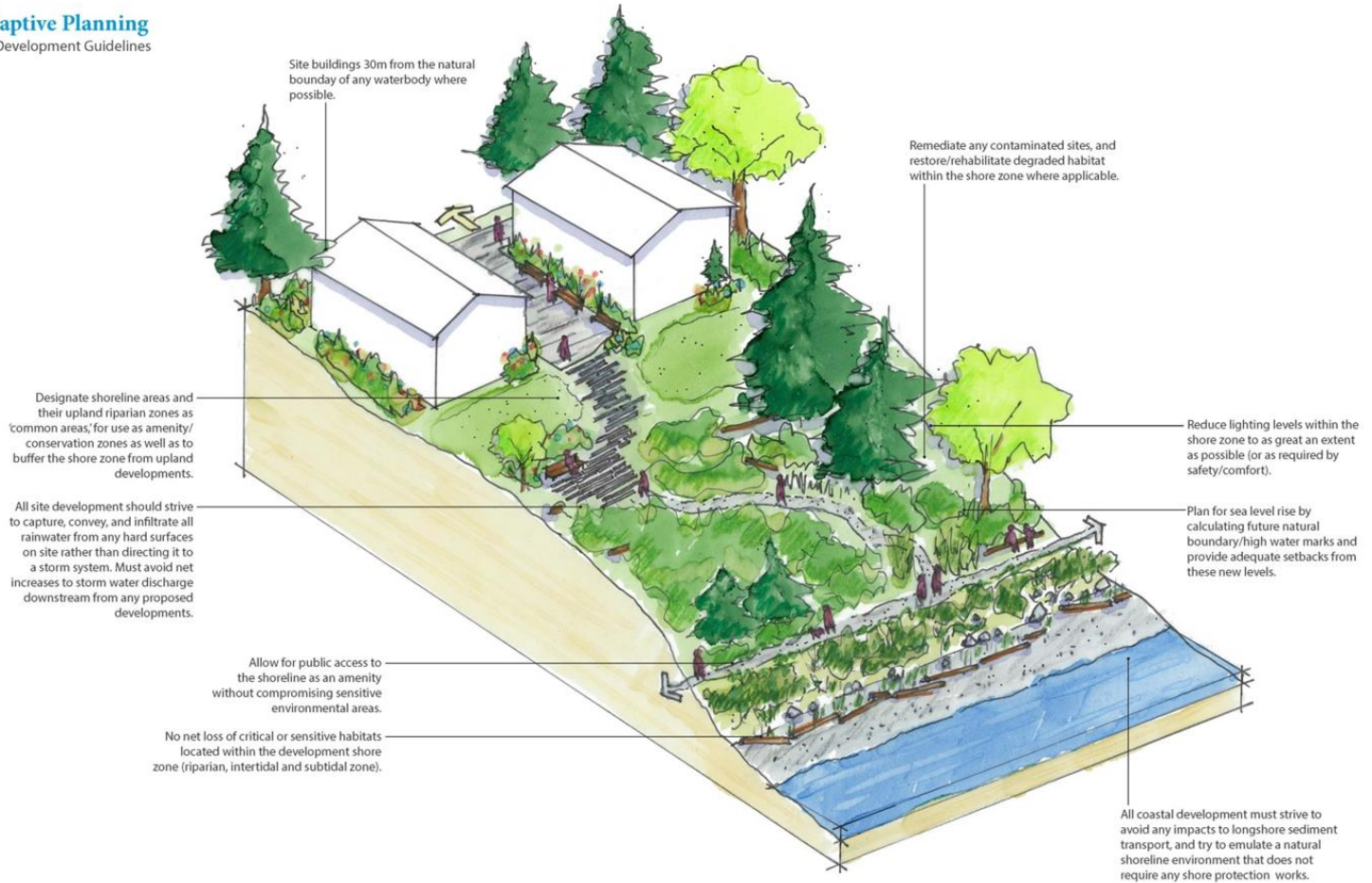
Jaclyn Kaloczi - Concept Sketch - Infrastructure for Futuristic Floating Aquaculture Farms 2



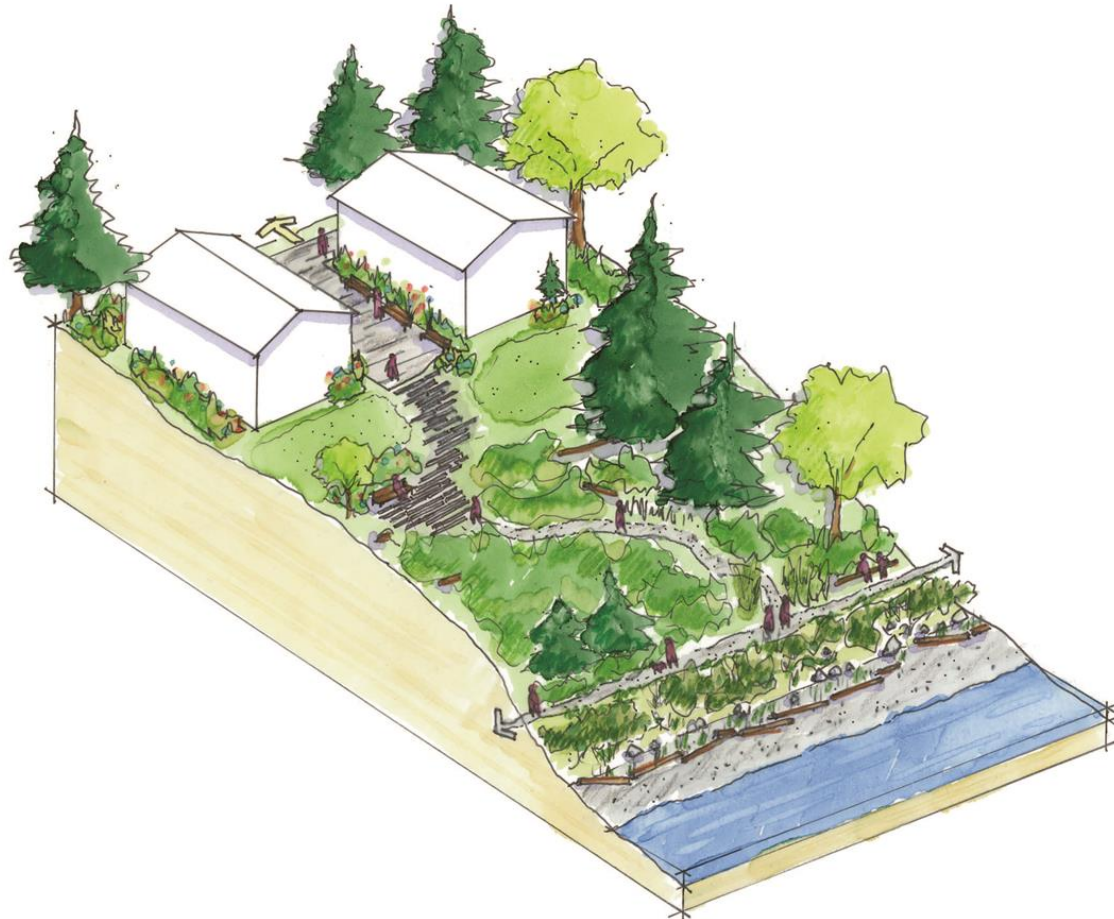
Jaclyn Kaloczi - Concept Sketch - Infrastructure for Futuristic Floating Aquaculture Farms 3

## Site Adaptive Planning

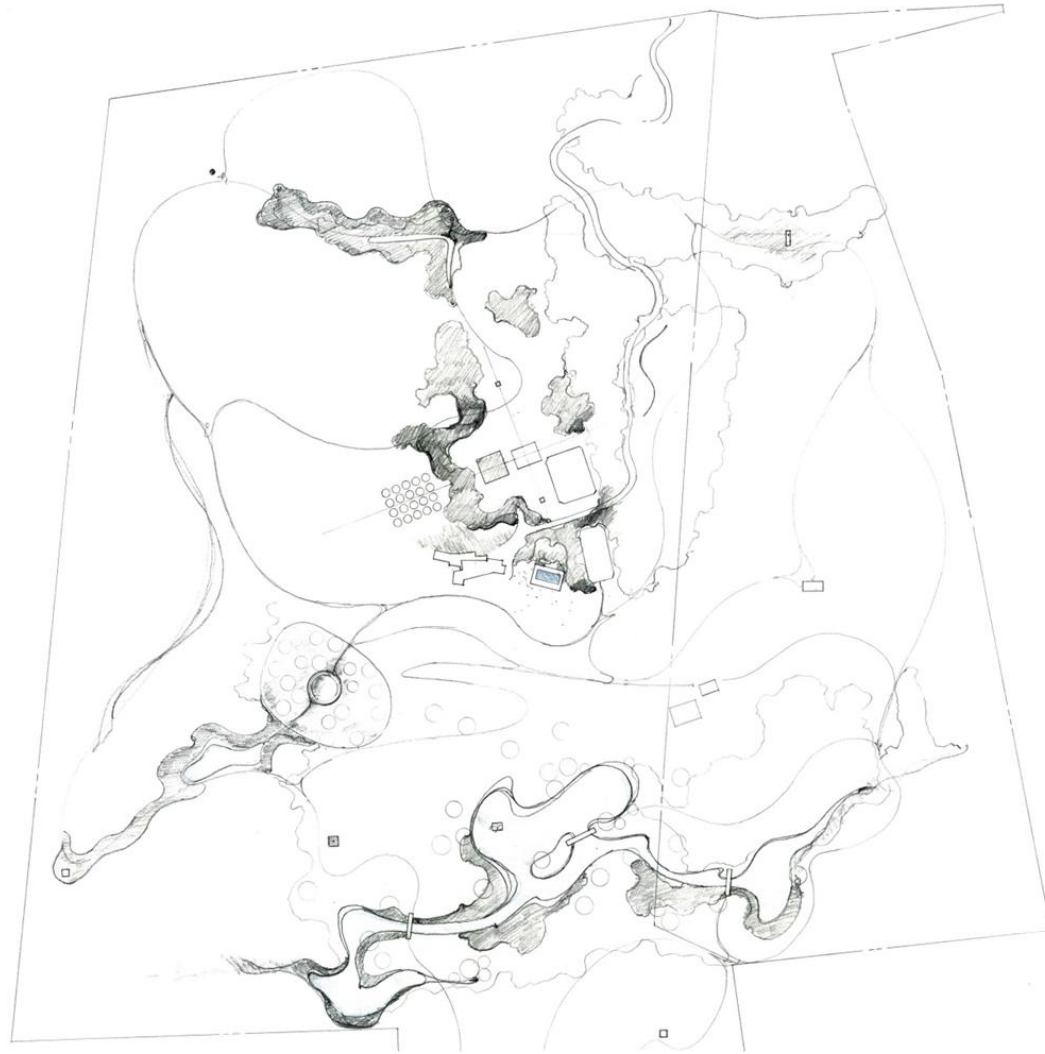
Shoreline Development Guidelines



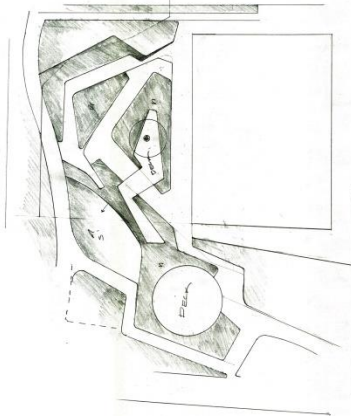
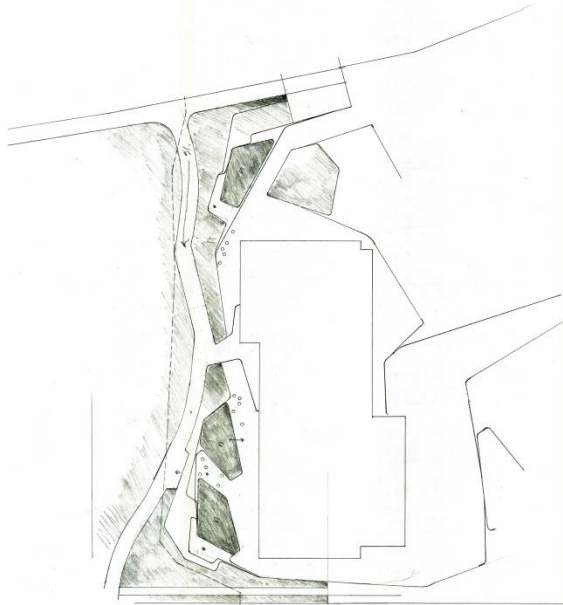
James Godwin - Shoreline Development Guidelines (Annotated)



James Godwin - Shoreline Development Guidelines (Non-Annotated)

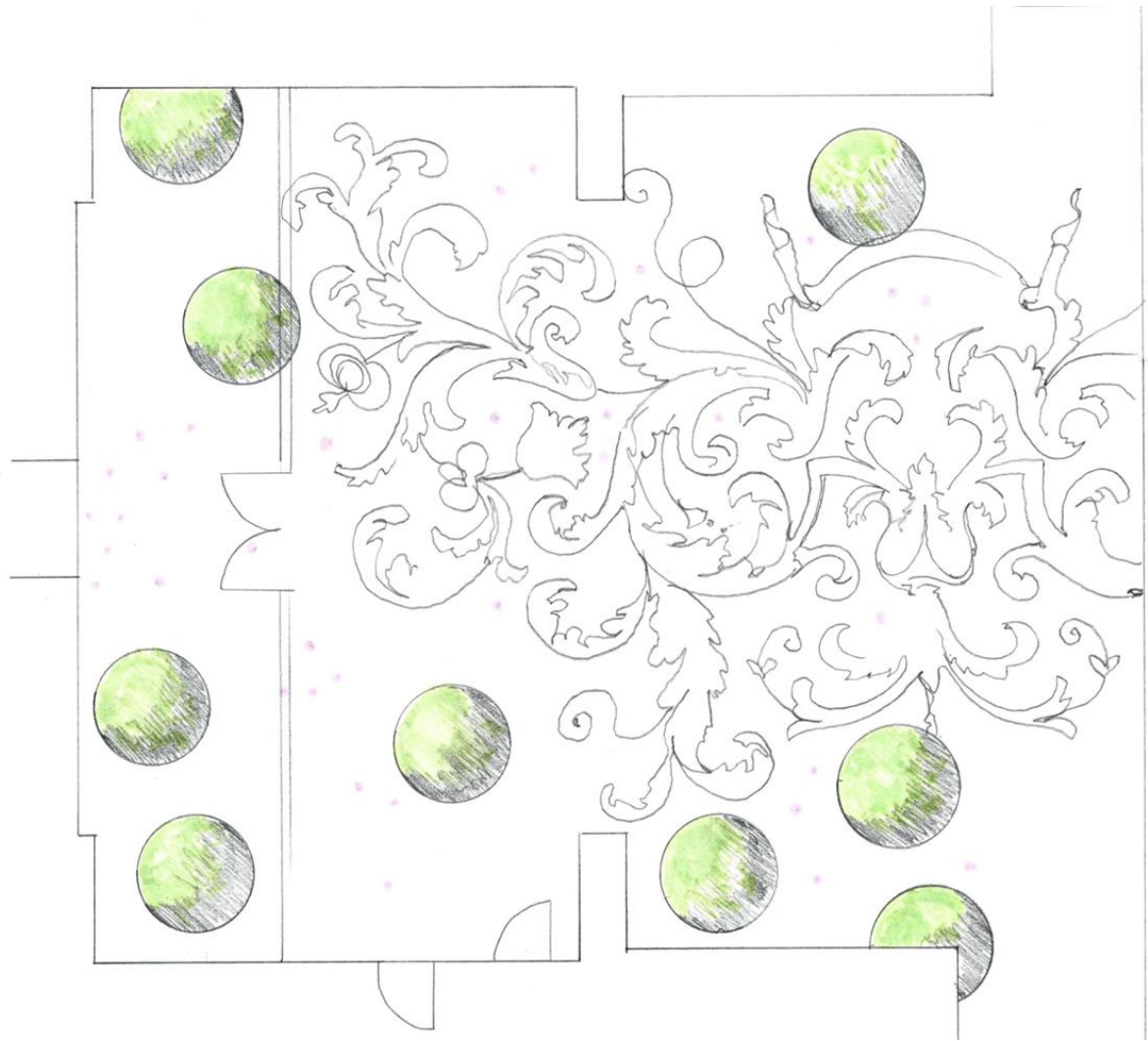


Janet Rosenberg - Country Estate Landscape Design Concept

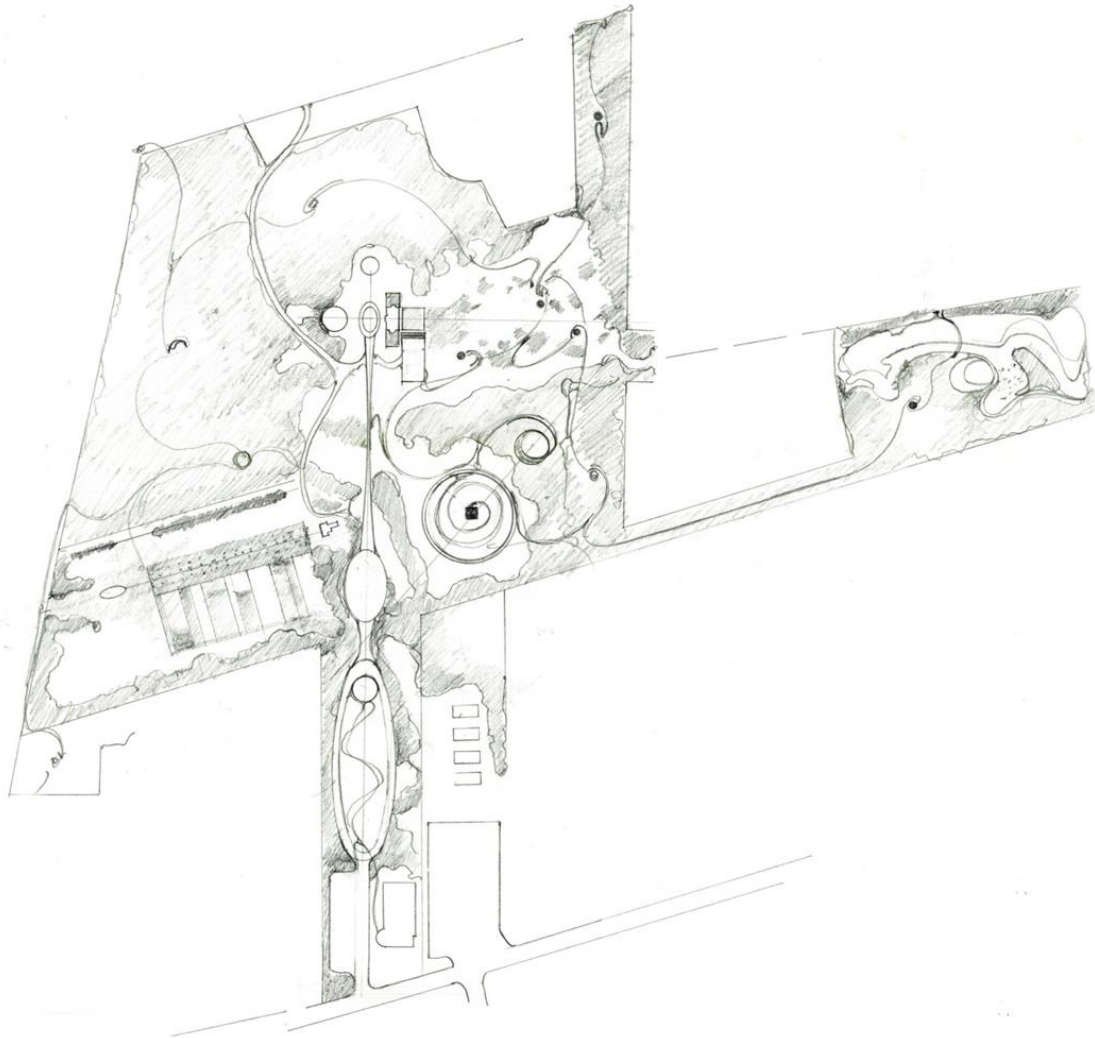


Janet Rosenberg - Landscape Concept Study\_Edge Condition

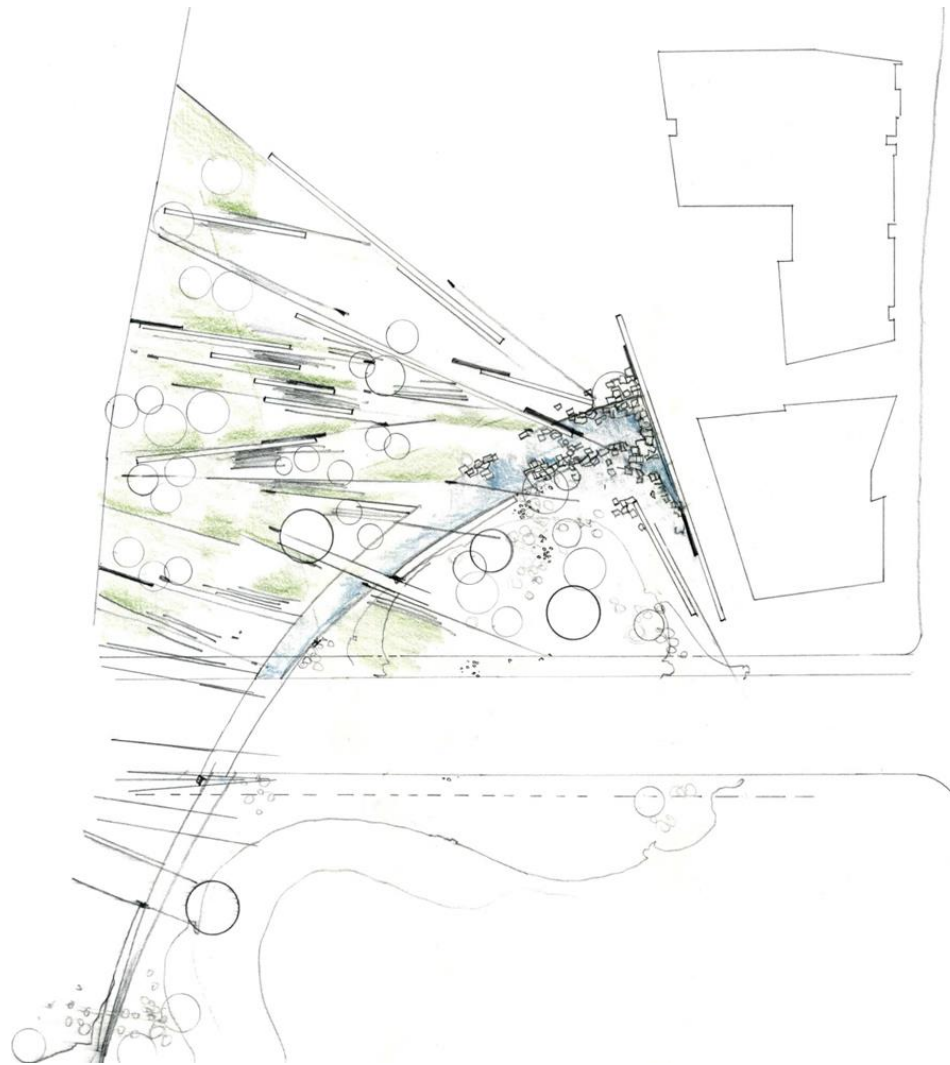




Janet Rosenberg - Luxury Condominium Development Courtyard Design Concept



Janet Rosenberg - Open Space Master Plan Design Concept



Janet Rosenberg - Concept Study - Park Concept Study (Ontario) Unbuilt



Joe Zhou - Ciqikou Urban Redevelopment Birdview Sketch



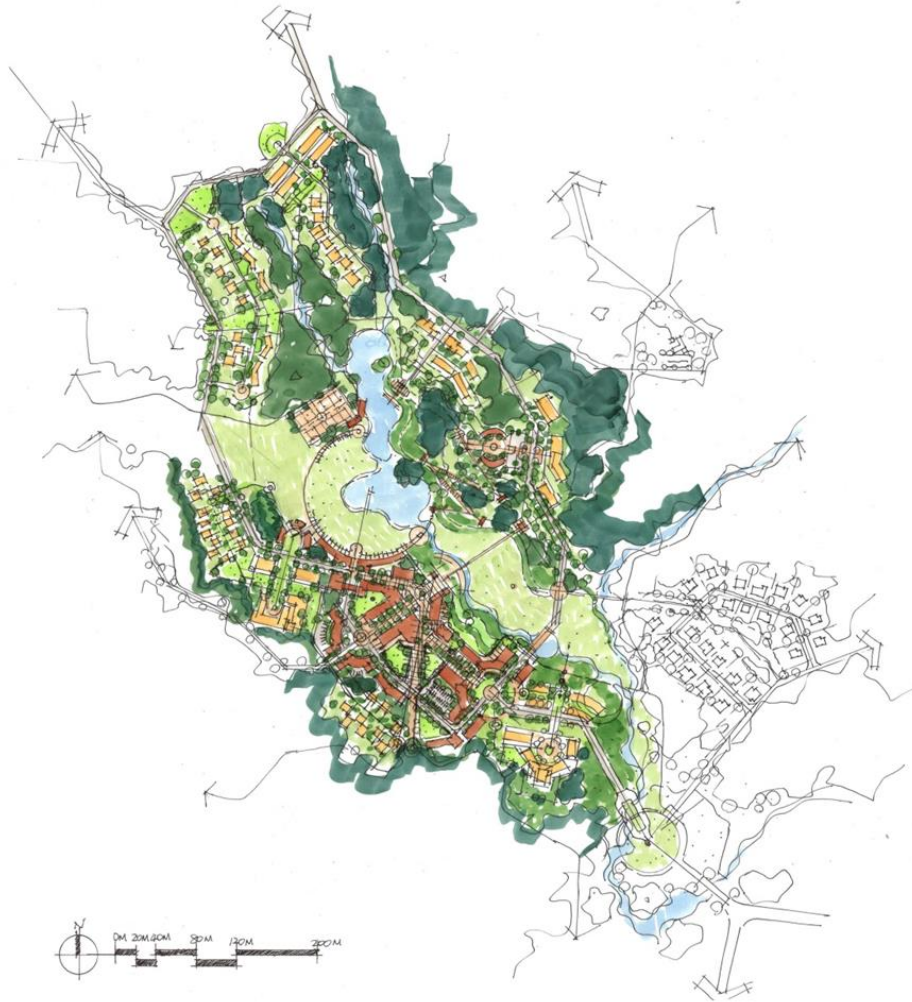
Joe Zhou - Coquitlam Town Centre Park Perspective



Joe Zhou - North East False Creek Proposed Plan Birdview

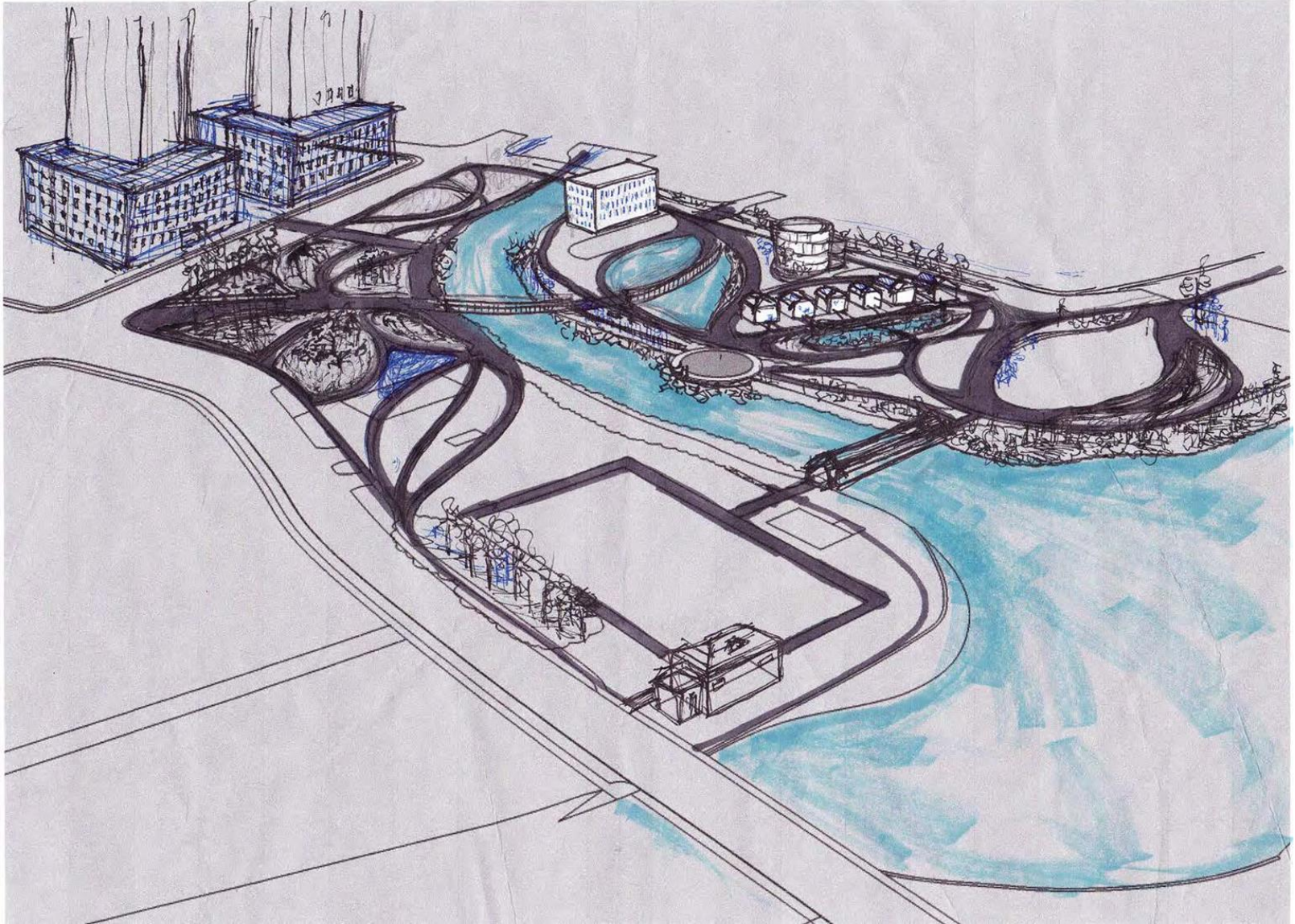


Joe Zhou - Royal Bay Waterfront Proposed Plan & Birdview Sketch



Joe Zhou - Squamish DL 515 Neighbourhood Sketch Plan

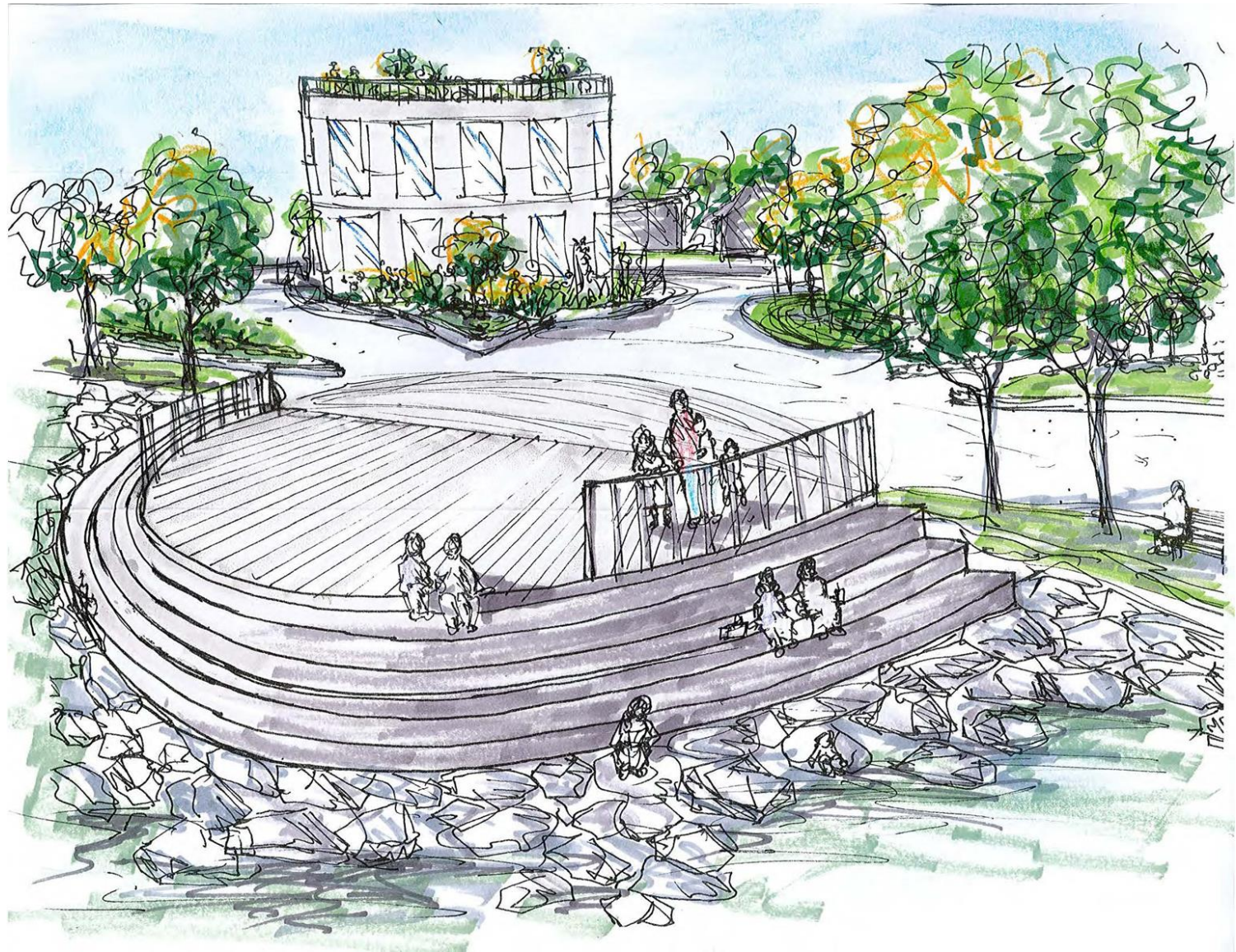




Natalie Gibbs - Riverside Community Park Design and Concept Development 1



Natalie Gibbs - Riverside Community Park Design and Concept Development 2



Natalie Gibbs - Riverside Community Park Design and Concept Development 3



Natalie Gibbs - Riverside Community Park Visualization



Natalie Gibbs - Yorklands Green Hub Kids Play Area



Neda Roohnia - LARC 504 Studio 4



Neda Roohnia - Sketching Course 11



Neda Roohnia - Sketching Course 12





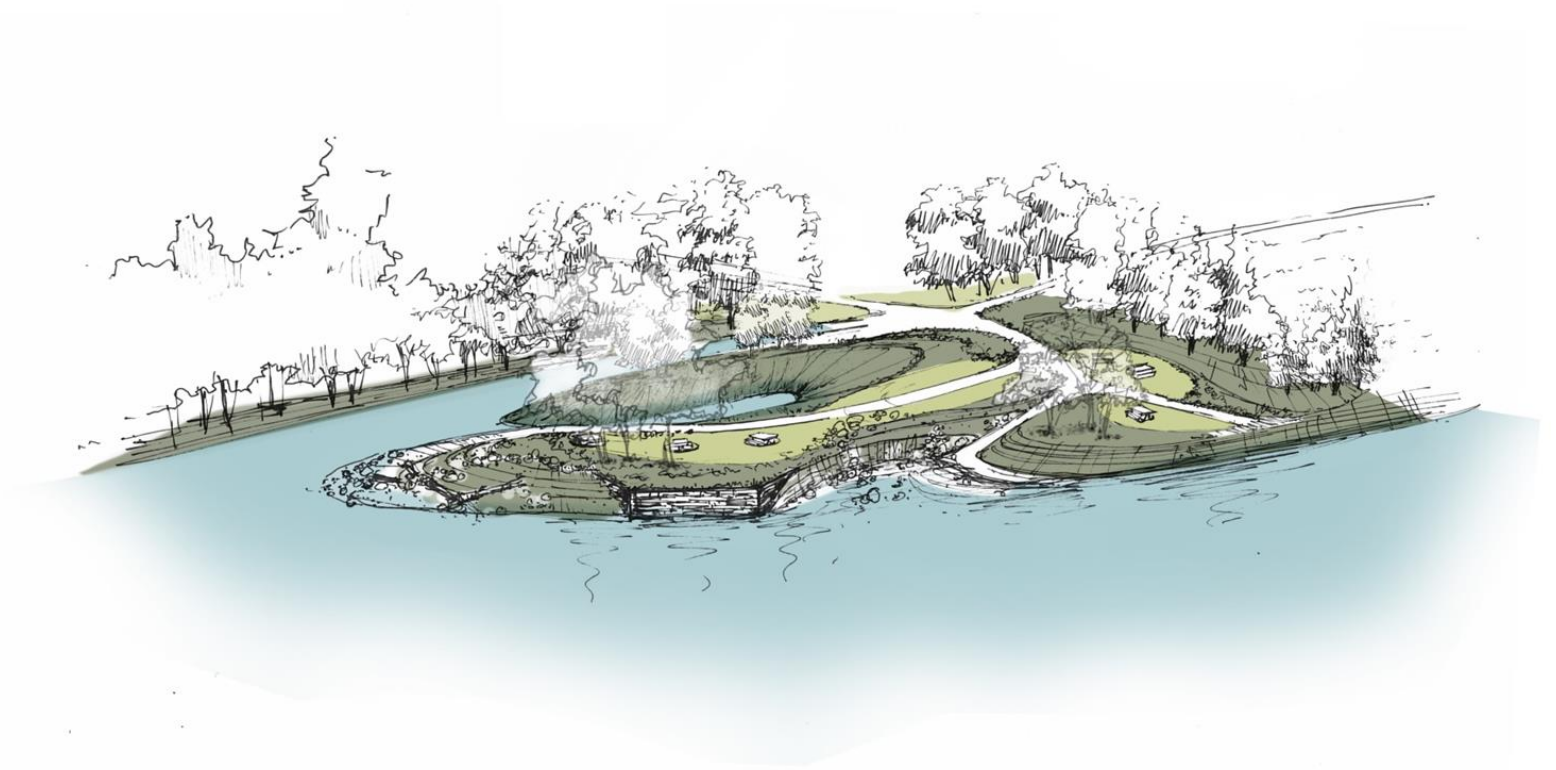
Neda Roohnia - Sketching Course 13



Neda Roohnia - Sketching Course 14



Neda Roohnia - Space2place Cumberland Point 18



Neda Roohnia - Space2place Cumberland Point 19



Neda Roohnia - Space2place Project Surrey Bend 15



Neda Roohnia - Space2place Project Surrey Bend 16



Neda Roohnia - Space2place Project Surrey Bend 17

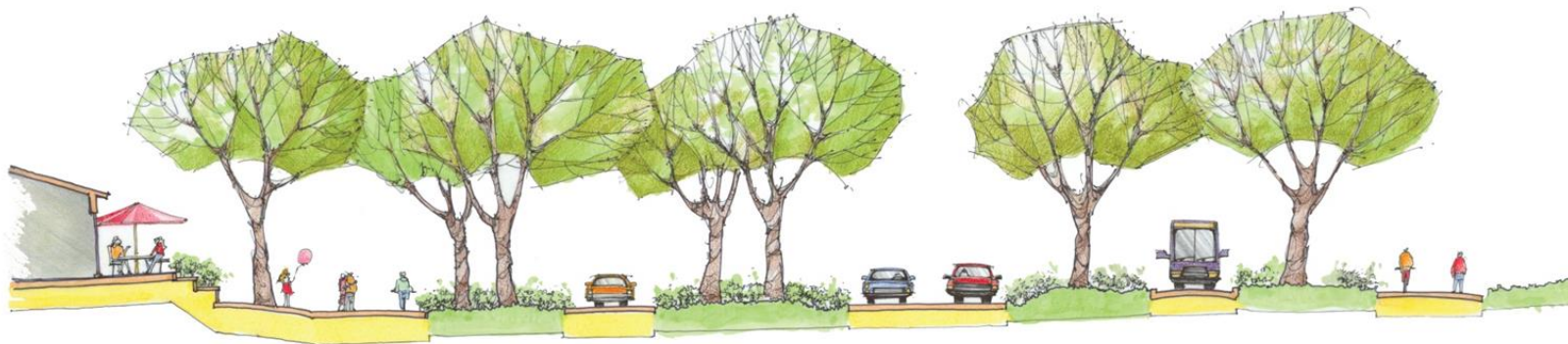


Neda Roohnia - Surrey Charette 1





Neda Roohnia - Surrey Charette 2



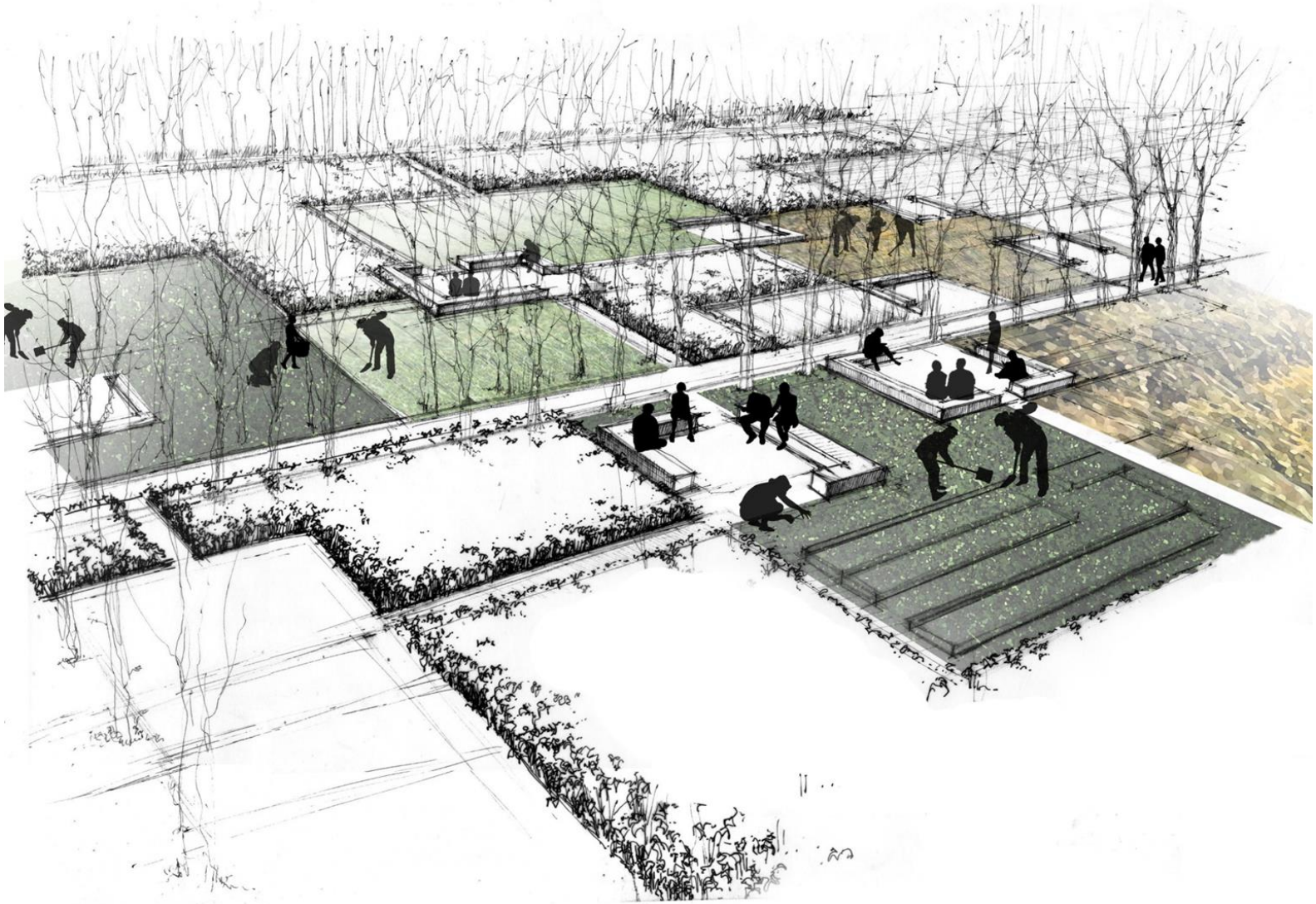
Neda Roohnia - Surrey Charette 3



Neda Roohnia - UBC Thesis 5



Neda Roohnia - UBC Thesis 6



Neda Roohnia - UBC Thesis 7





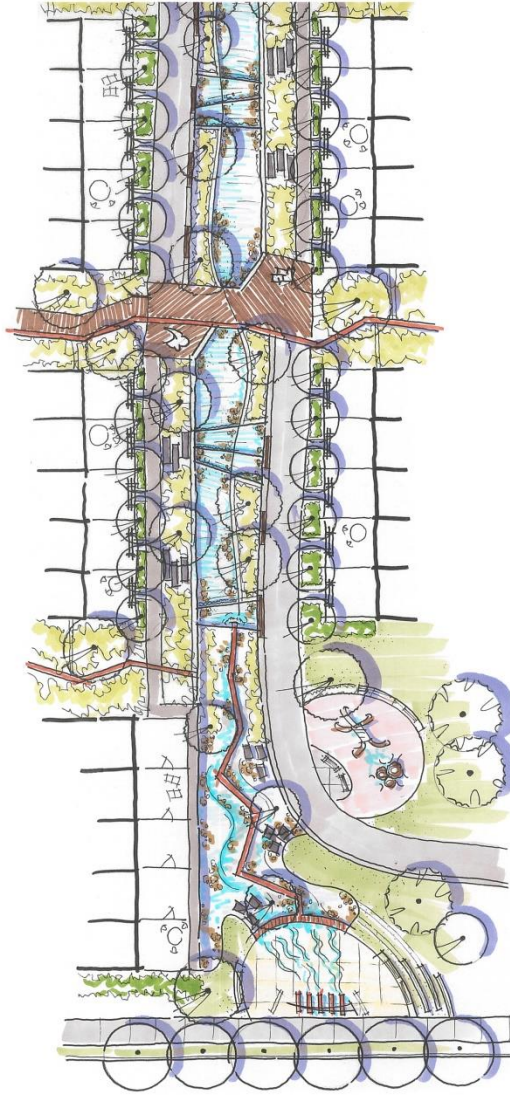
Neda Roohnia - UBC Thesis 9



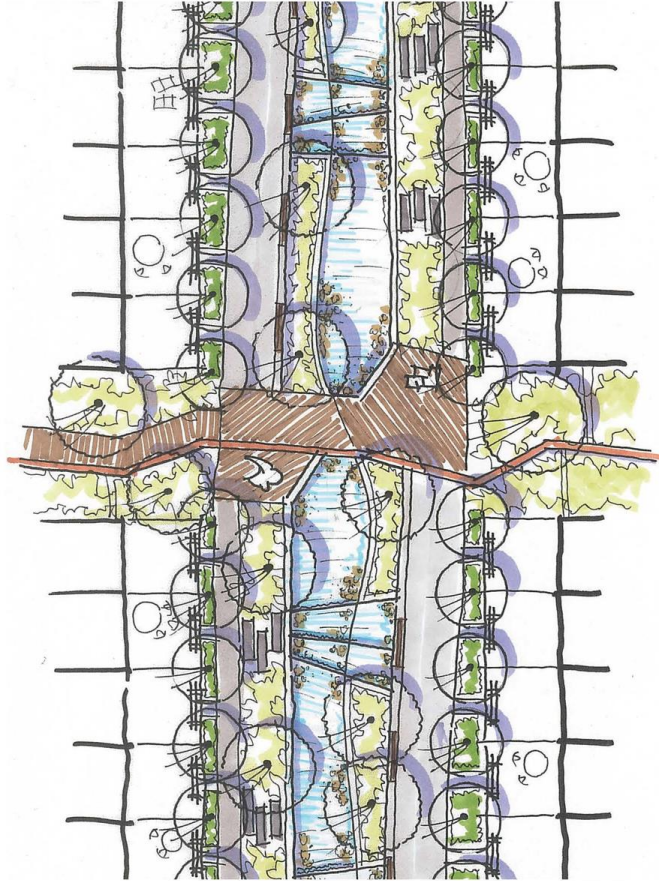




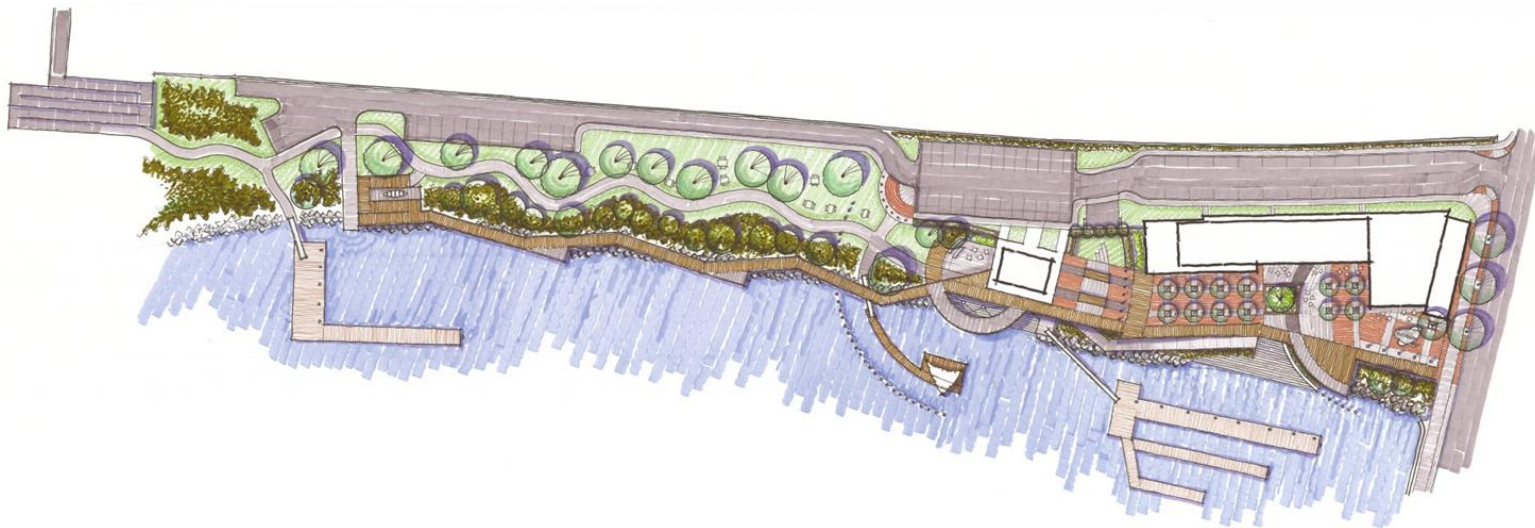
Niall McGarvey - Detention Pond Amenity Sketch



Niall McGarvey - Greenway Character 1



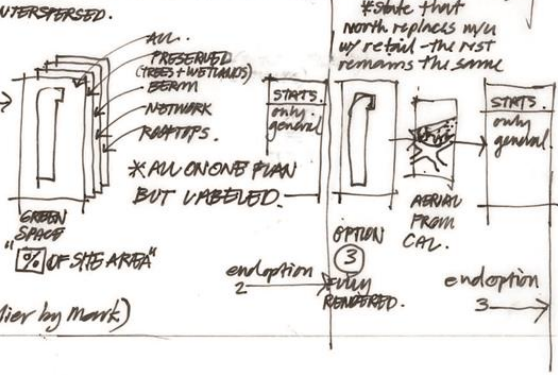
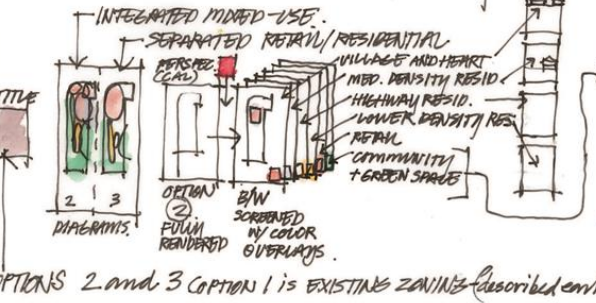
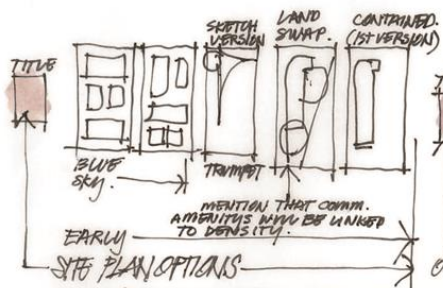
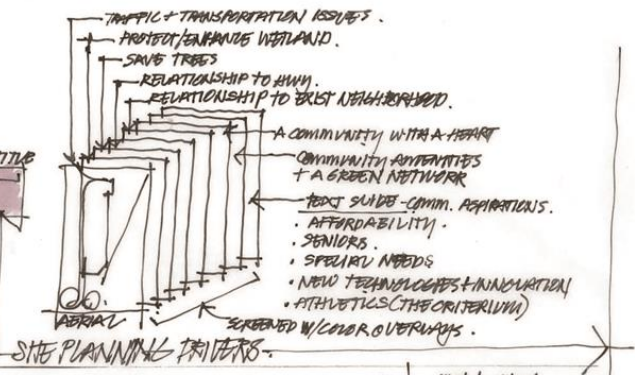
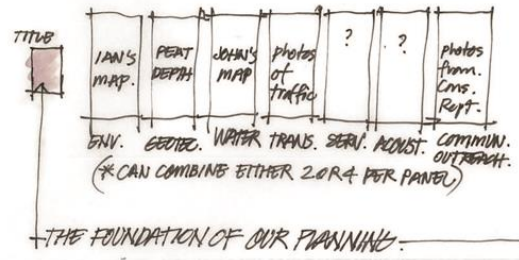
Niall McGarvey - Greenway Character 2



Niall McGarvey - Waterfront Design 1

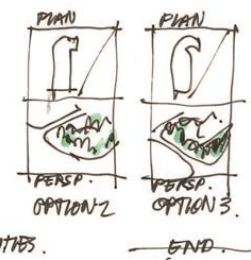
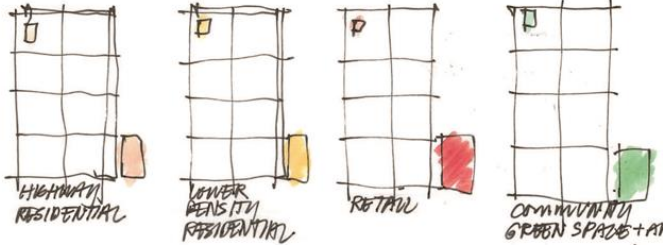
OUR DESIGN PROCESS \*MARK TO ADDRESS OPTION 1 IN HIS COMMENTS\*  
 NOV. 22 2012.

**KIM.** →

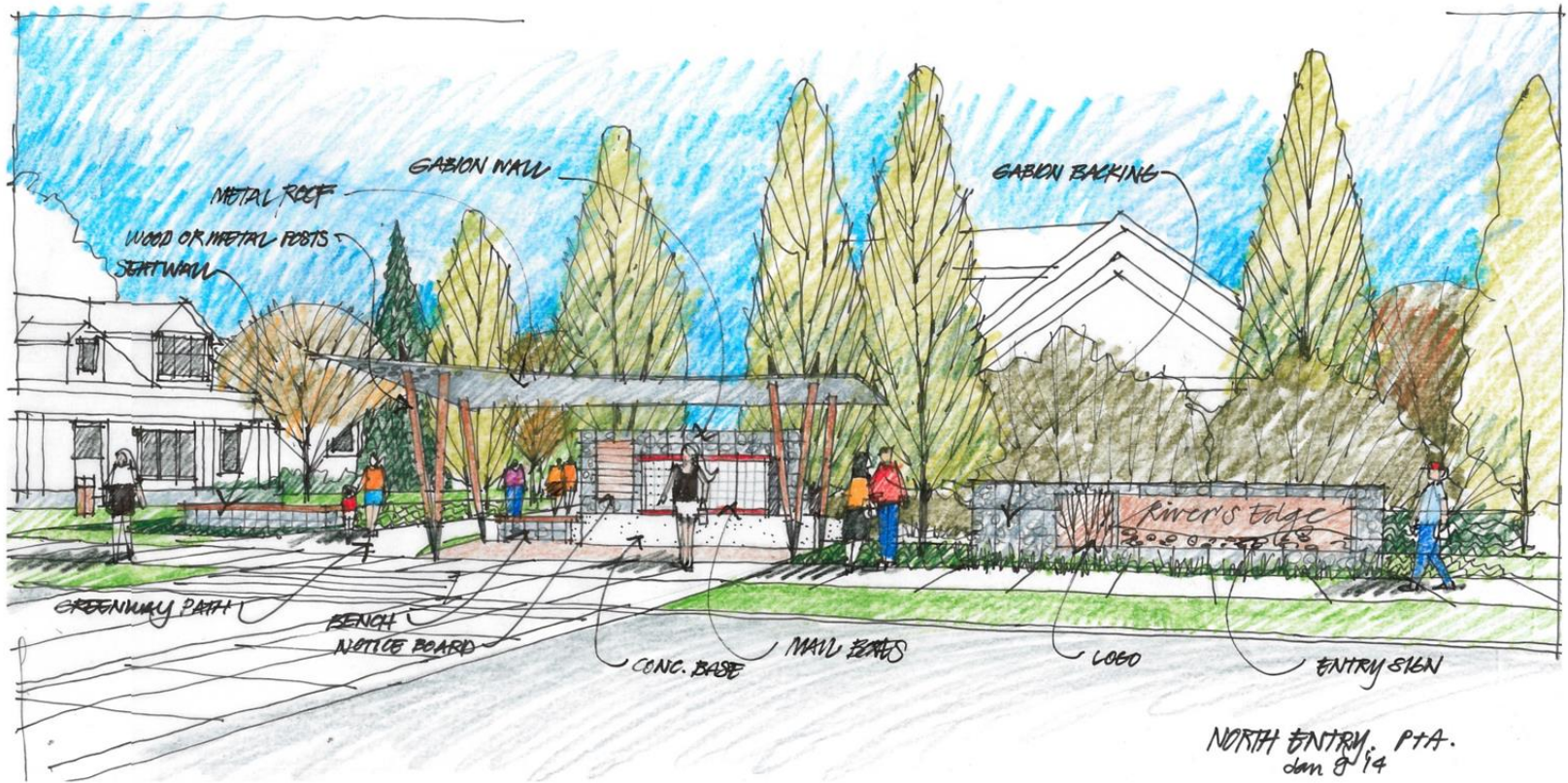


**CAL.** →

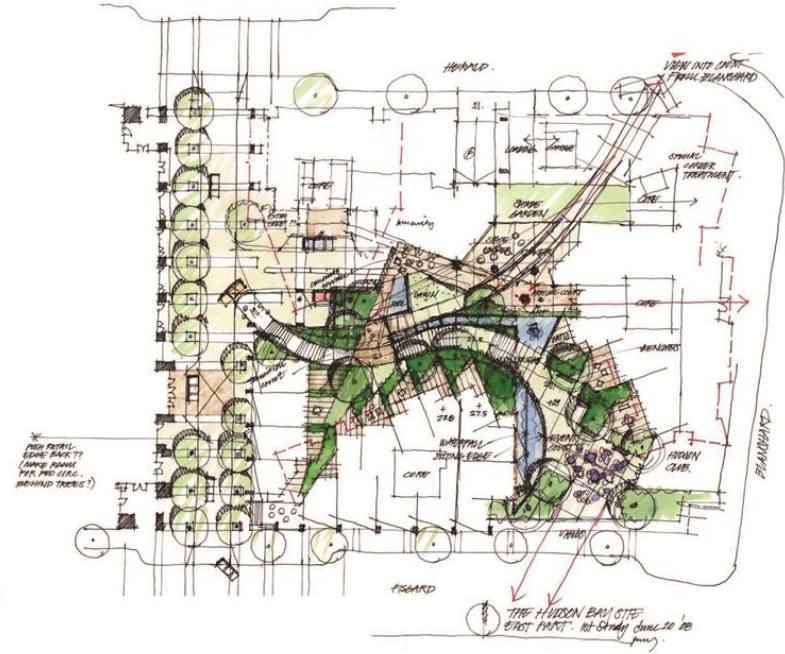
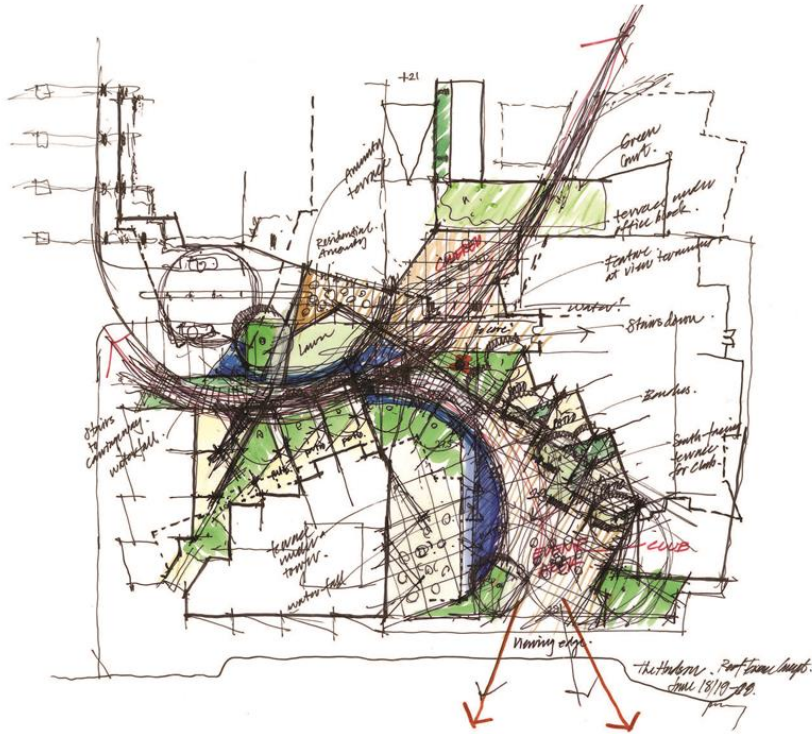
sketches + precedents.



BACK TO MARK.  
 10770 72ND AVE.  
 PRESENTATION  
 STORY BOARD.



R. Kim Perry - River's Edge - North Entry

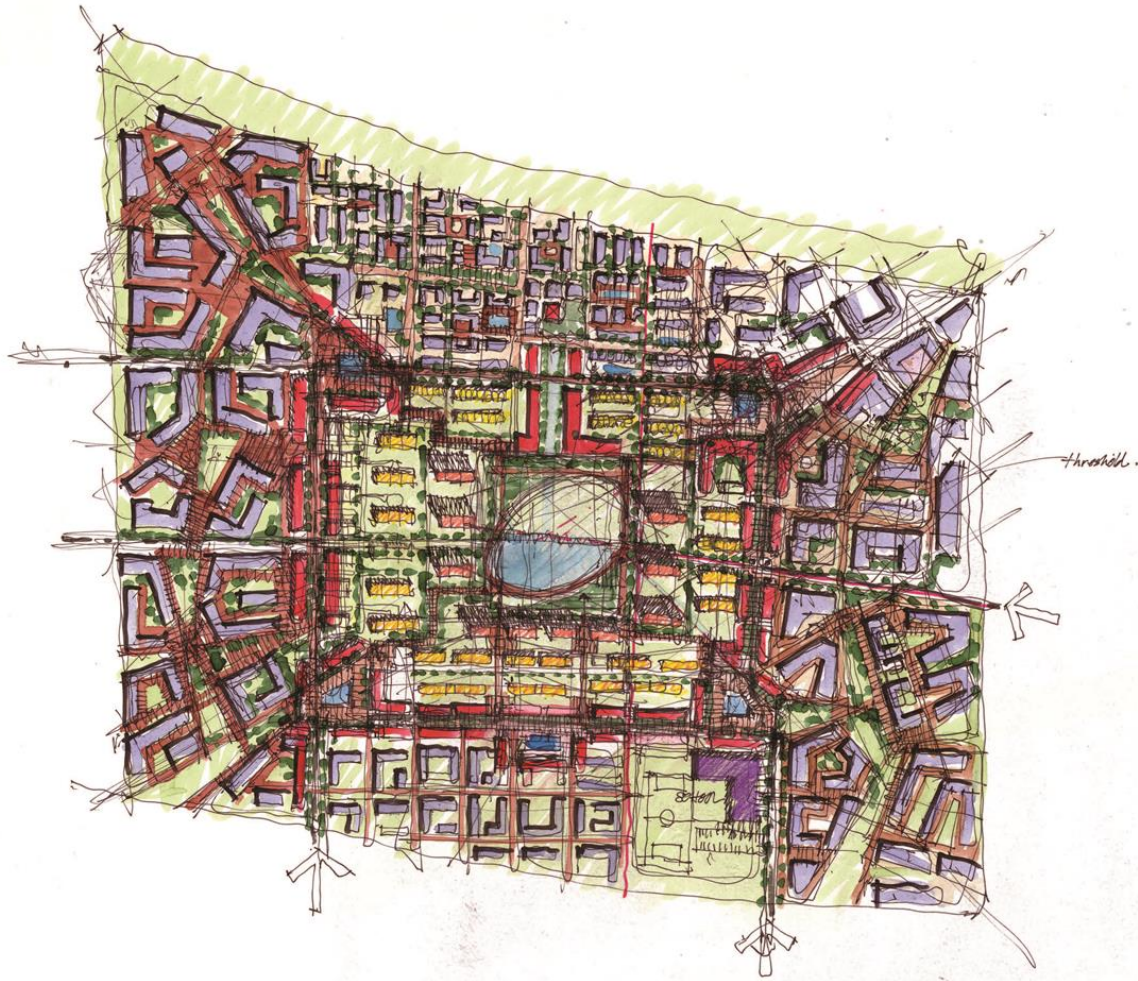


R. Kim Perry - The Hudson's Bay Site



R. Kim Perry - Xinli, Tianjin Community Plan





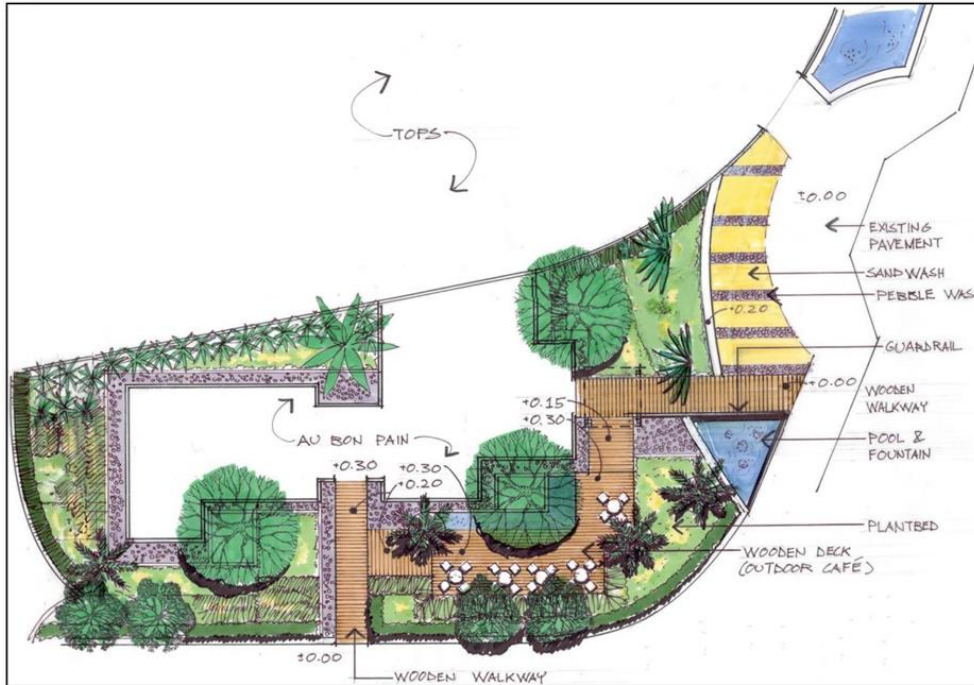
R. Kim Perry - Zhengzhou China Rough Study



SK-A illustrates sidewalk, rain gardens and interim bike route over infiltration trench with under-drain (base for future LRT).

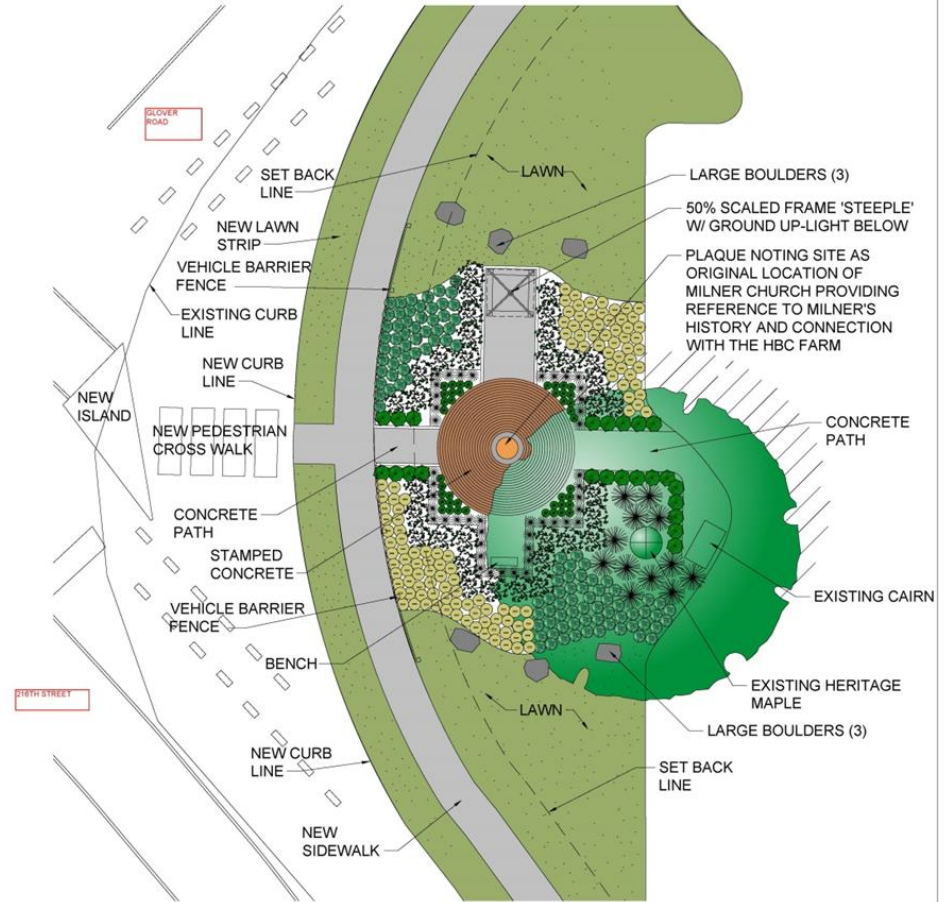


SK-B illustrates sidewalk, separated bike route, infiltration rain garden, LRT with 'green tracks', structural base / STW trench.



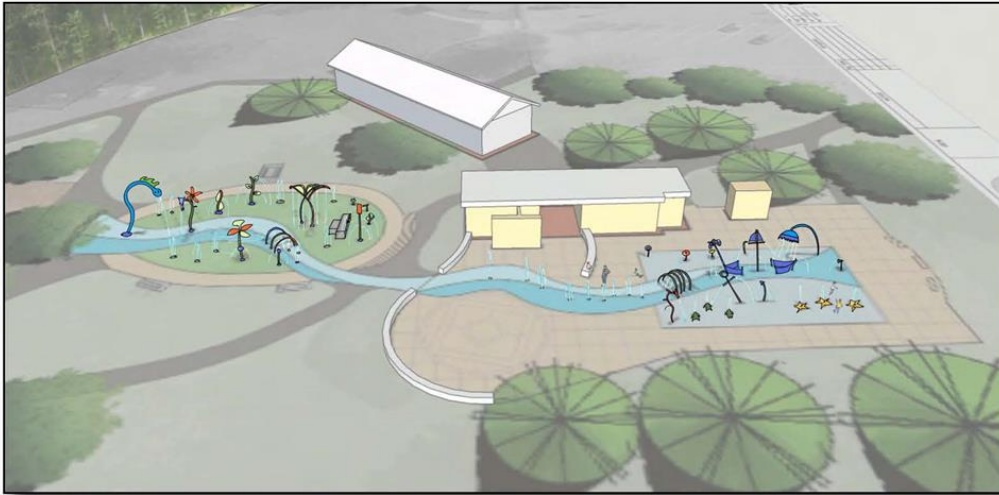
**RITTI SUVILAI, LANDSCAPE ARCHITECT  
 AU BON PAIN BAKERY CAFE  
 BANGKOK, THAILAND**

Ritti Suvilai - ABP

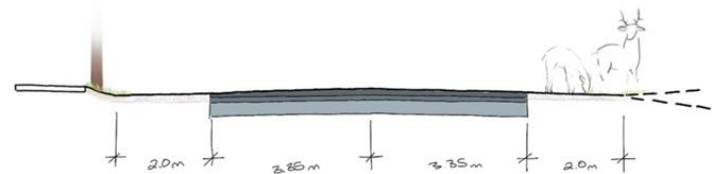
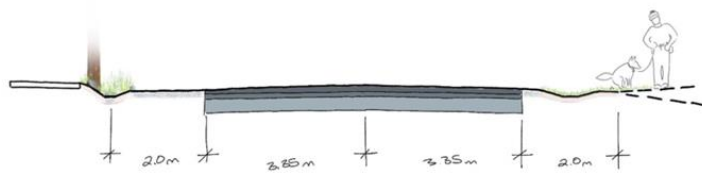
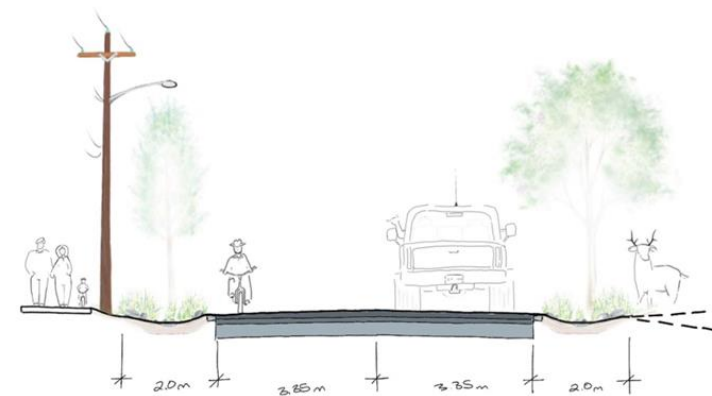


LEGEND	<p>Materials</p> <p>Gravel</p> <p>Storm Drains</p> <p>Ditches</p> <p>Manhole Covers</p> <p>Fences</p>	BENCH-MARK	SEAL	<p>NOTES</p> <p>UTILITIES AND APPURTENANCES</p>	<p>NO. DATE REVISIONS</p> <p>1 11/11/2011</p> <p>2 11/11/2011</p> <p>3 11/11/2011</p> <p>4 11/11/2011</p>	<p>DATE</p> <p>11/11/2011</p> <p>11/11/2011</p> <p>11/11/2011</p> <p>11/11/2011</p>	<p>PROJECT</p> <p>MILNER MEMORIAL CAIRN</p>	<p>The Corporation of the Township of Langley</p> <p>MILNER MEMORIAL CAIRN</p> <p>GLOVER ROAD &amp; 216 STREET</p>
					<p>DATE</p> <p>11/11/2011</p> <p>11/11/2011</p> <p>11/11/2011</p> <p>11/11/2011</p>			

Ritti Suvilai - Milner Landscape

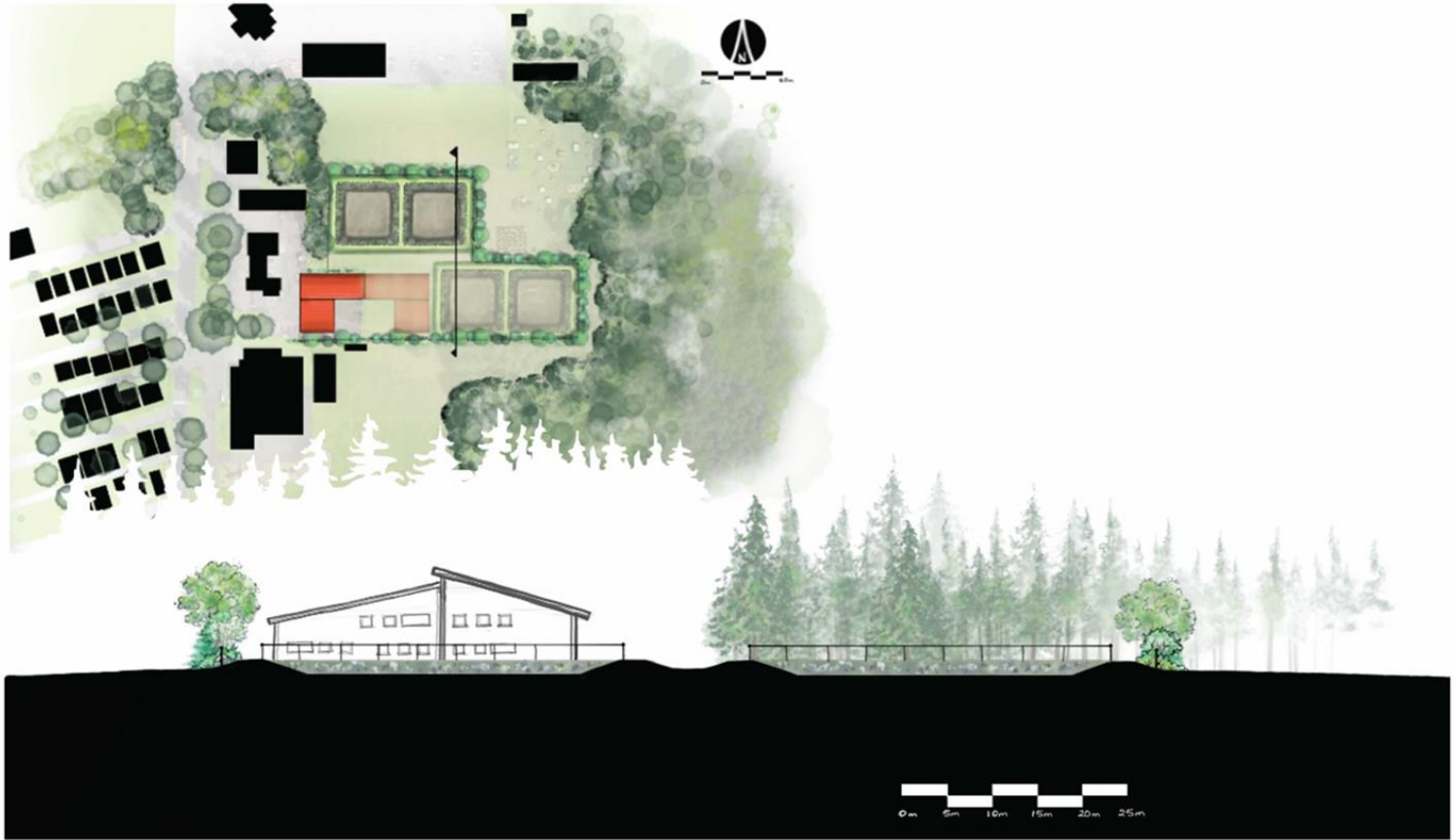


**RITTI SUVILAI, LANDSCAPE ARCHITECT  
LANGLEY SPLASH PADS  
LANGLEY, BC**



22ND STREET L.I.D. OPPORTUNITIES





Shasta McCoy - Cultus Lake North Waste Water Treatment Plant Concept



Shasta McCoy - Lhtako Confluence Park and Cultural Centre

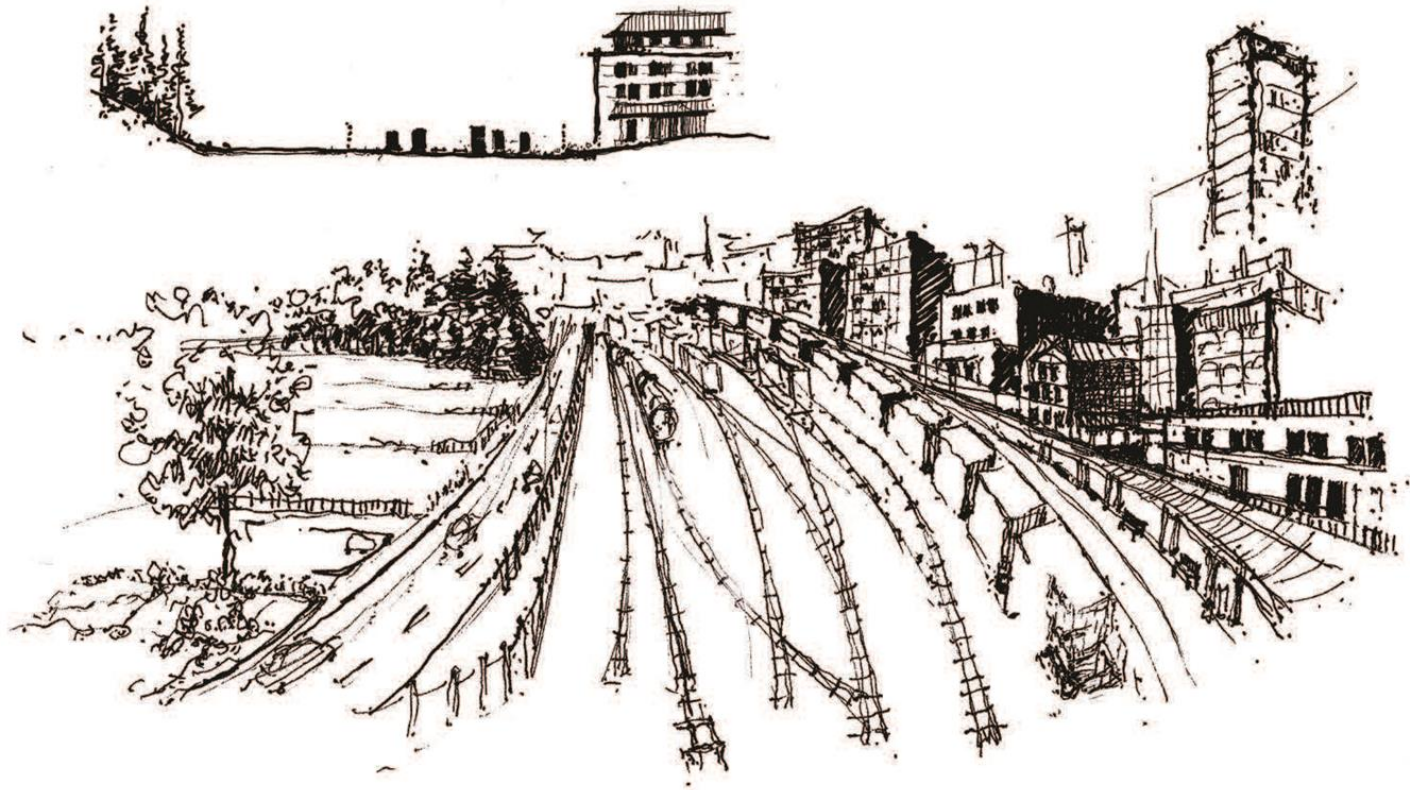




Shasta McCoy - Park Memorial Cemetery Expansion Concept

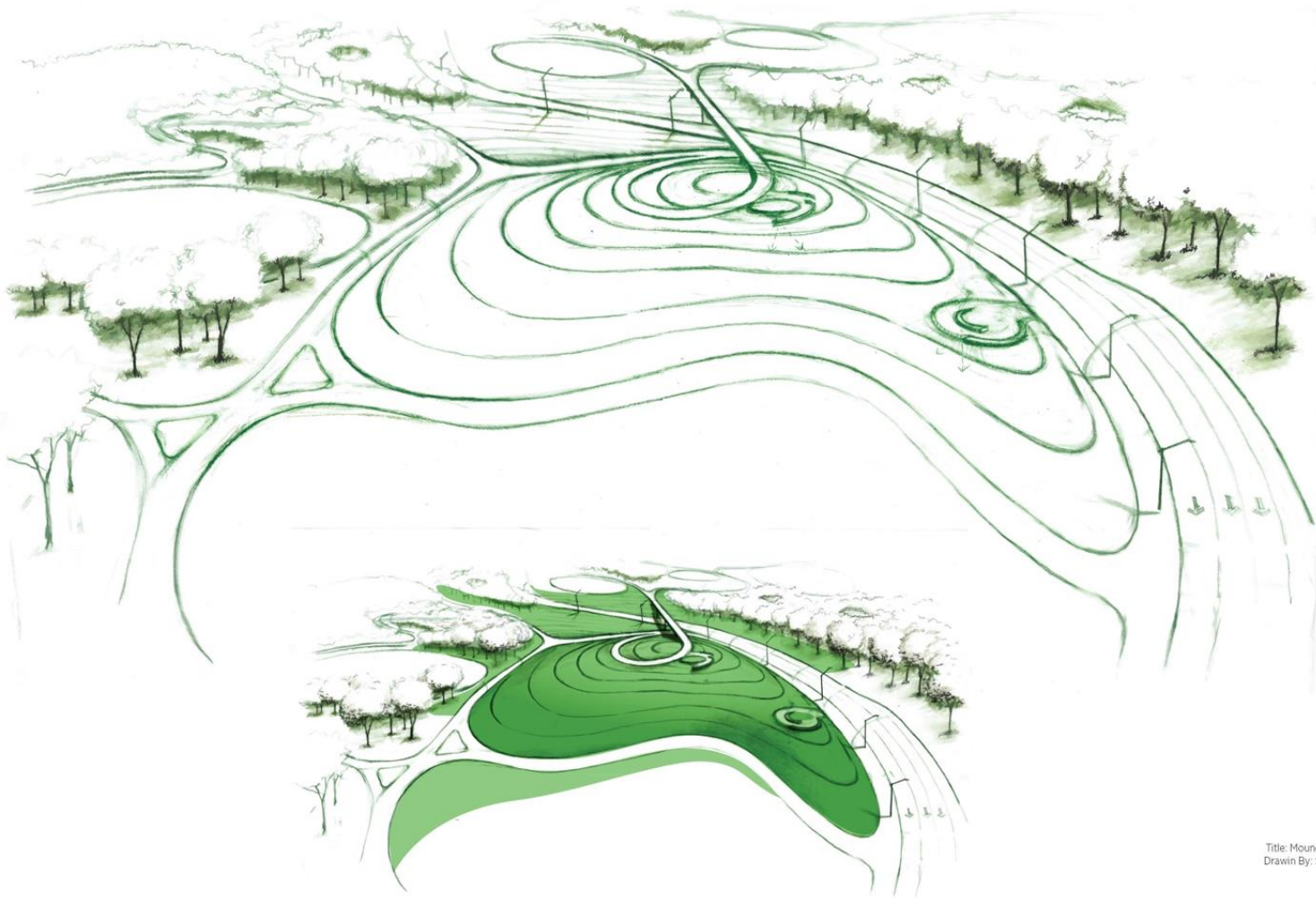


Shasta McCoy - South Quesnel Nature Playground



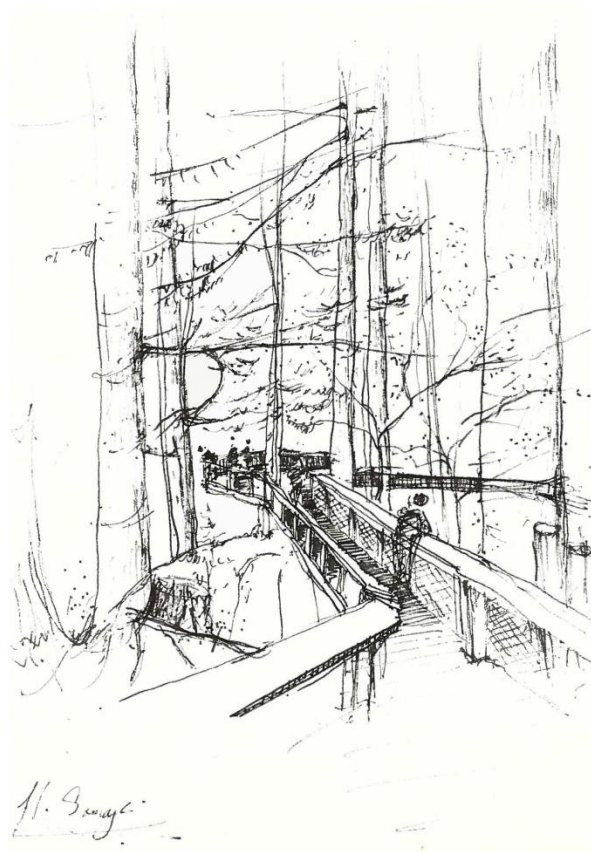
Title: Gastown North Side Train Tracks - Vancouver  
Drawn By: Somaye Hooshmand

Somaye Hooshmand – Gastown North Side Train Tracks



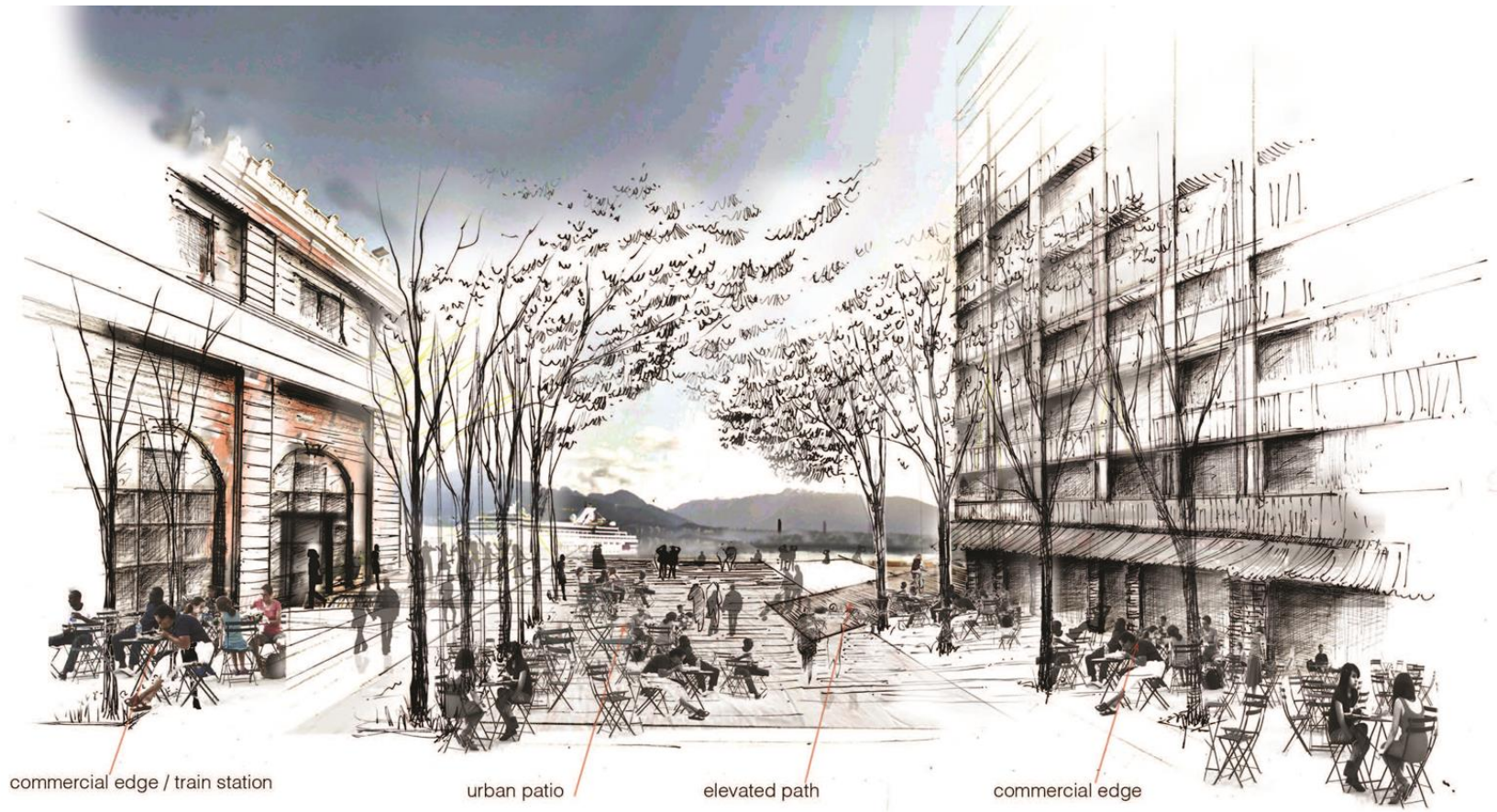
Title: Mound & Overpass Design  
Drawn By: Somaye Hooshmand  
Space2place

Somaye Hooshmand – Over Pass and Mound Design



Title: Rainforest Landscape - Capibara  
Drawn By: Somaye Hooshmand

Somaye Hooshmand – Rainforest Landscape



Title: Public Realm - Vancouver Water Front Station  
Drawn By: Somaye Hooshmand

Somaye Hooshmand – Public Realm



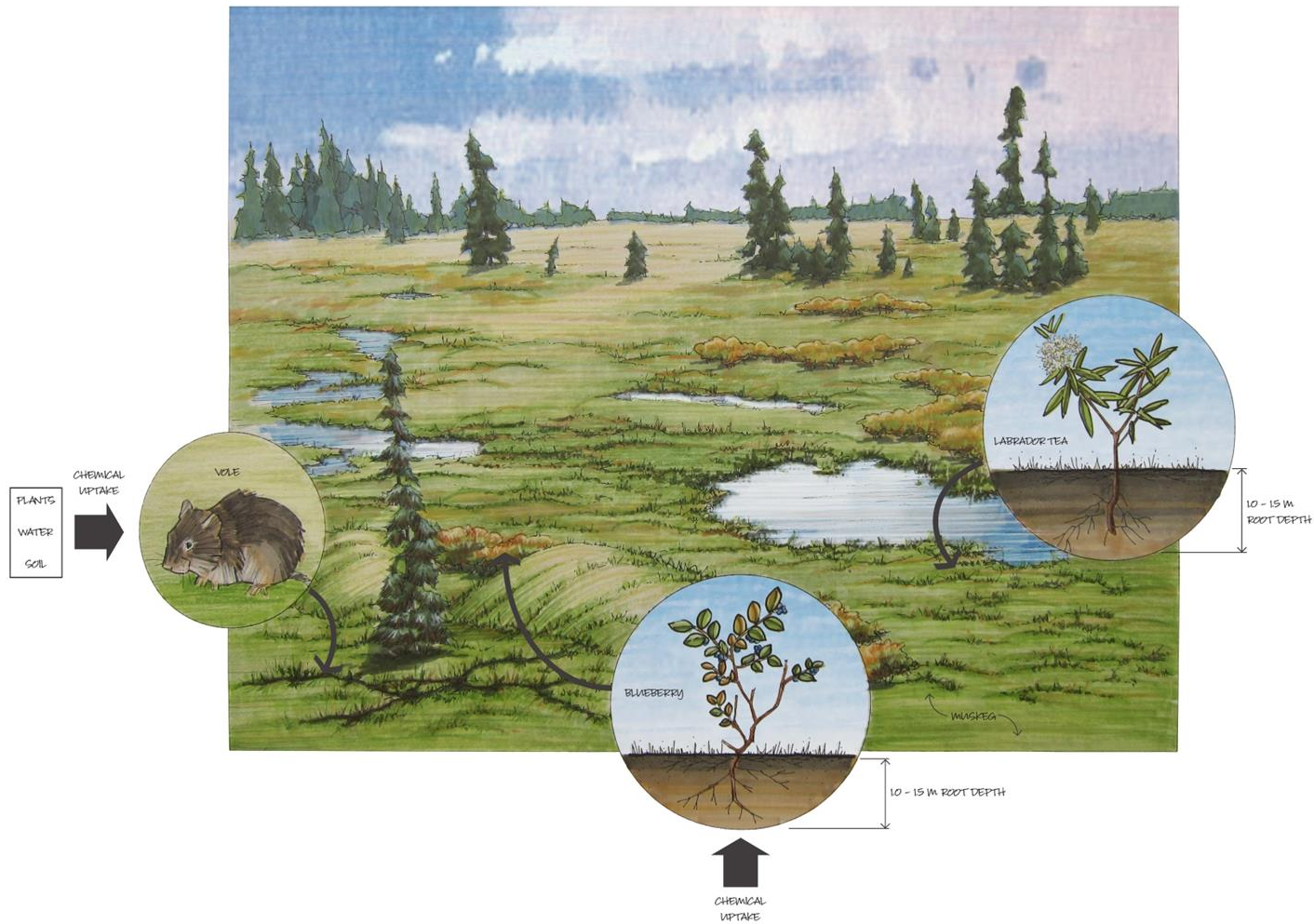
Somaye Hooshmand – Wetland Landscape



Title: Wetland Landscape -  
Paradise Meadows - Vancouver Island  
Drawn By: Somaye Hooshmand

Somaye Hooshmand – Wetland Landscape





Tanya Goertzen - Diagram of Ecological Risk Assessment of Pipeline



Terry Klassen - Engaging Youthful Innovation in Public Realm Design  
Thinking

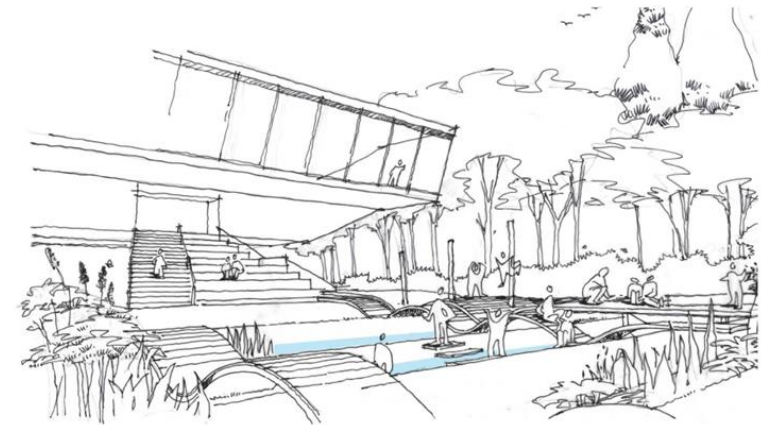
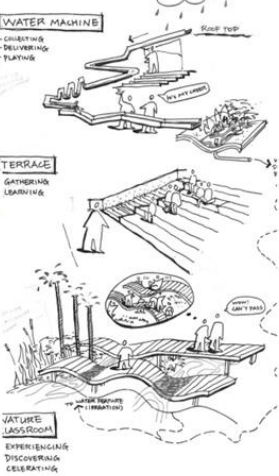
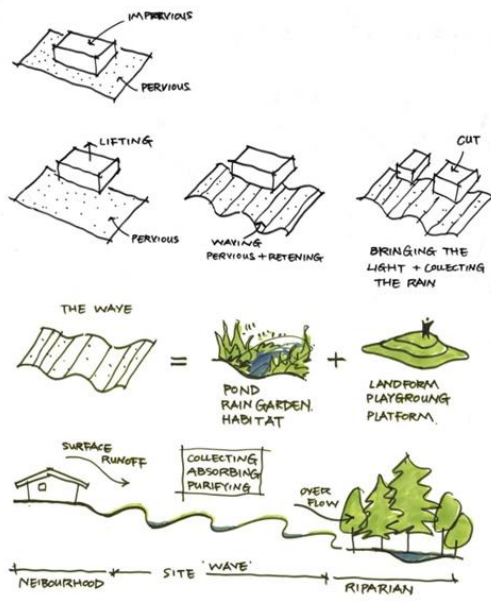
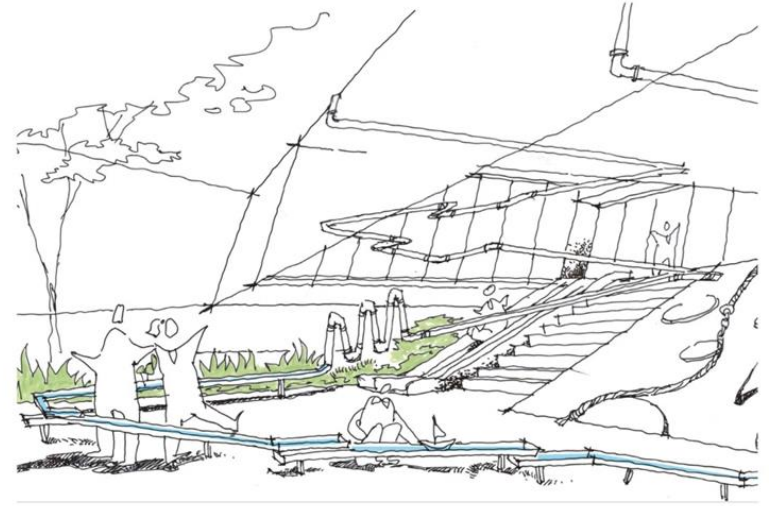
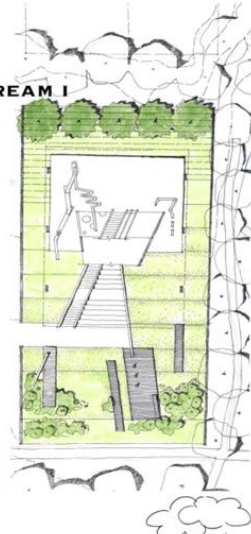
# LIVING WAVE

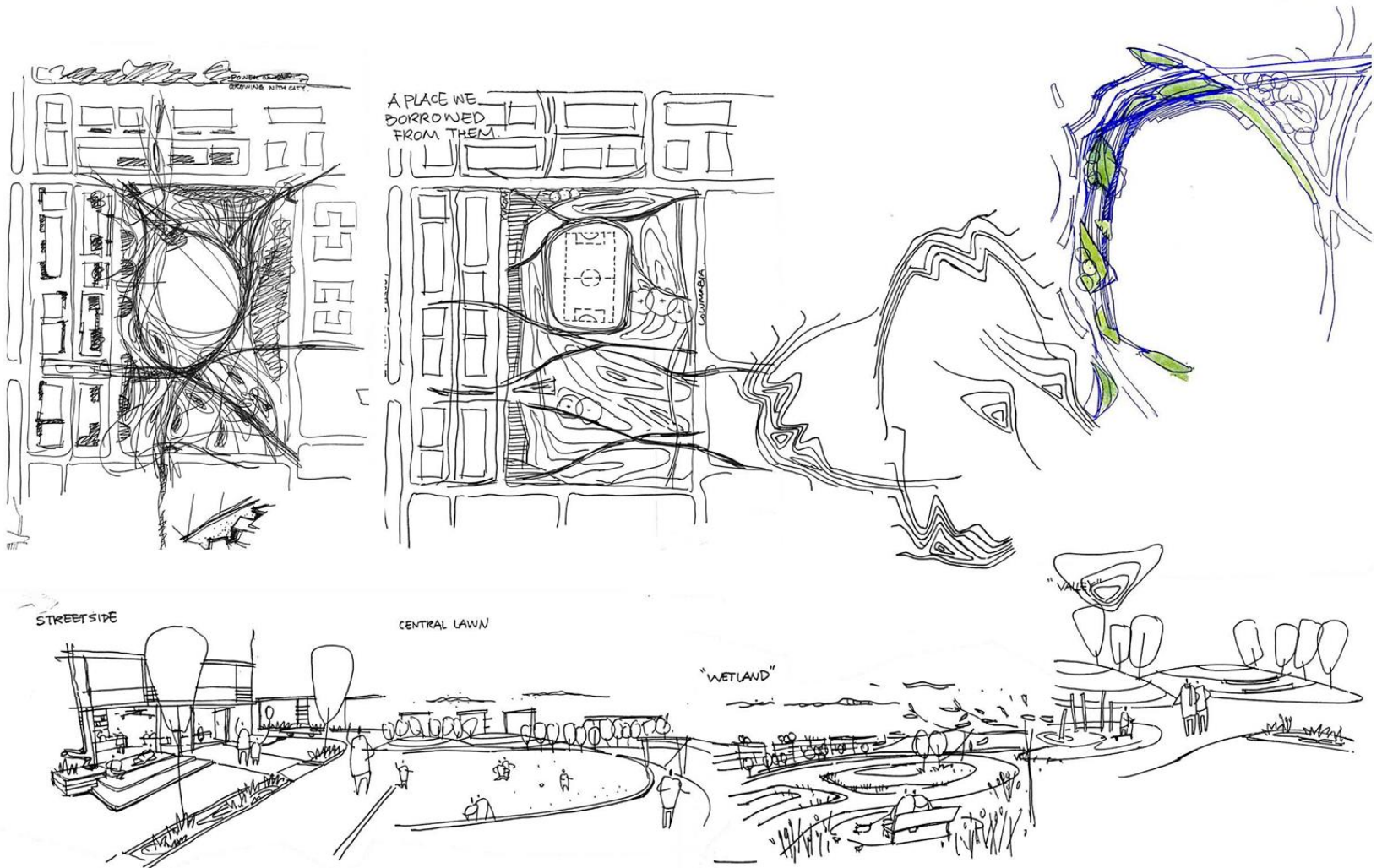
## STORMWATER DESIGN: FROM SOURCE TO STREAM I SITE SCALE

Location: 230 West 21st Street, North Vancouver.  
 Total Site Area: 996m<sup>2</sup>  
 Pervious Area: 41%  
 Total Storage Capacity: 144m<sup>3</sup> (576,000 L)  
 Date: Designed in 2016  
 Project type: Vertical Studio

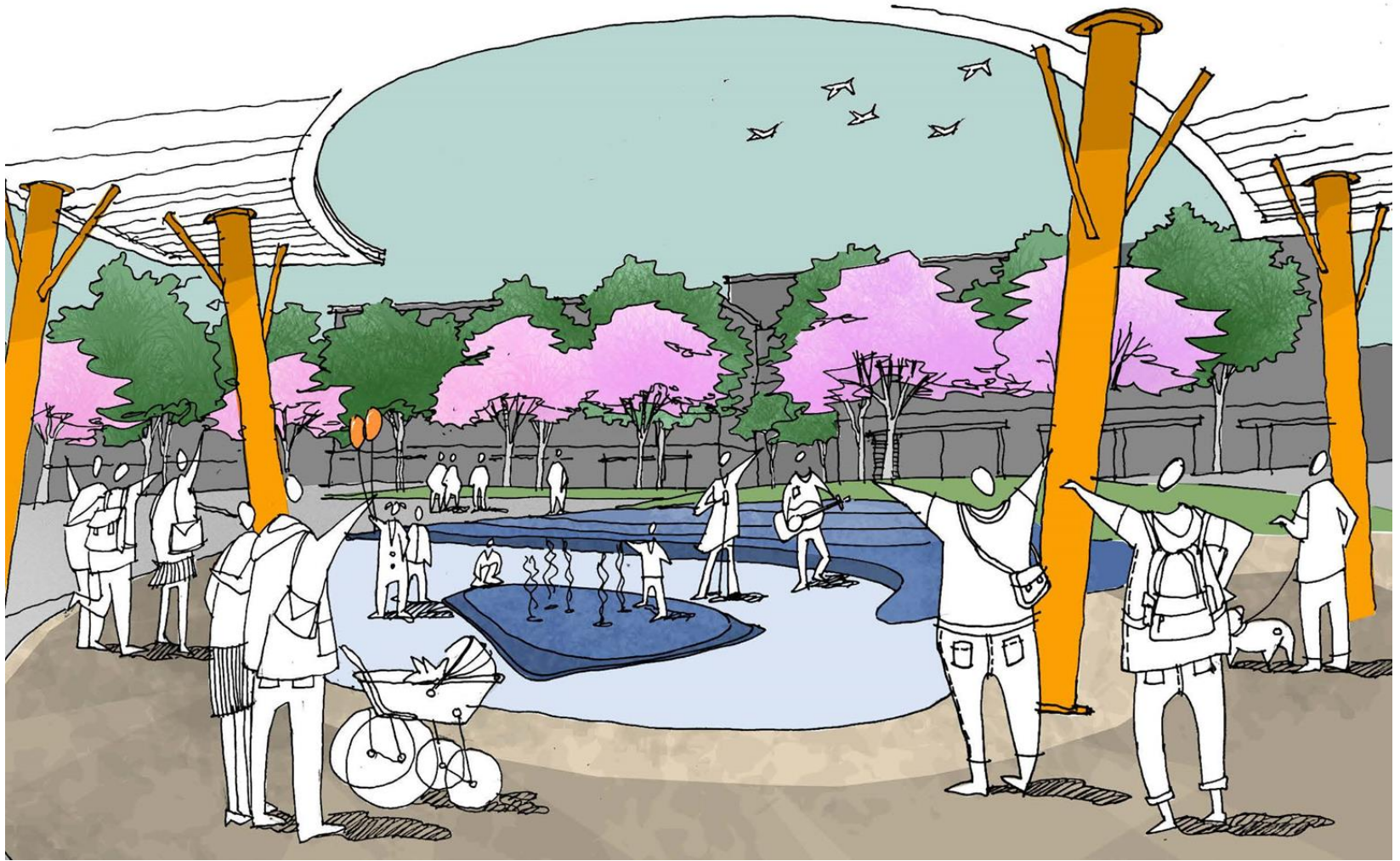


This design for a daycare collects and absorbs rainwater on site, reducing vulnerability to flooding and protecting downstream riparian area. This is achieved with three gestures: lifting the learning centre creates suspended semi-outdoor space. Cutting the centre brings in light and rainwater. Finally, waving the topography forms a rainwater-retaining habitat area/outdoor classroom.





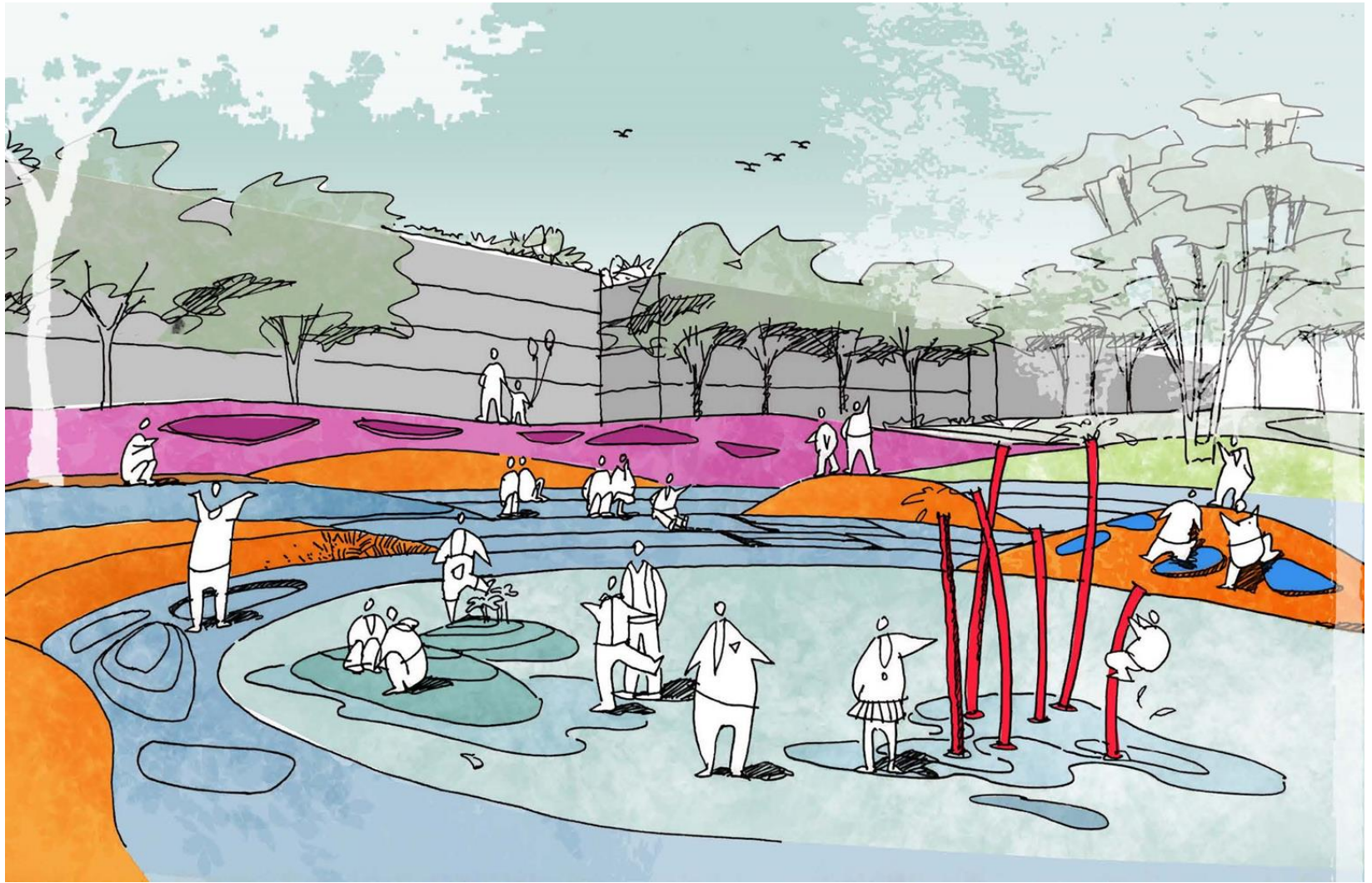
Tian Tian - RainScape 1



Tian Tian - RainScape 2



Tian Tian - RainScape 3



Tian Tian - RainScape 4



Tian Tian - RainScape 5