


A statement of probable construction cost should be prepared at the end of which of the following phases? *Choose 3 that apply.*

- site analysis
  - site inventory
  - schematic design
  - design development
  - construction documents
  - bidding and negotiations
  - construction contract administration
- 



The following are **MOST LIKELY** included in an initial design budget. *Choose 4 that apply.*

profit

staff time

direct costs


consultant costs

construction labor cost


additional services cost

construction materials cost






Which of the following are essential considerations for the management of a park and ecotourism project with respect to natural resources?

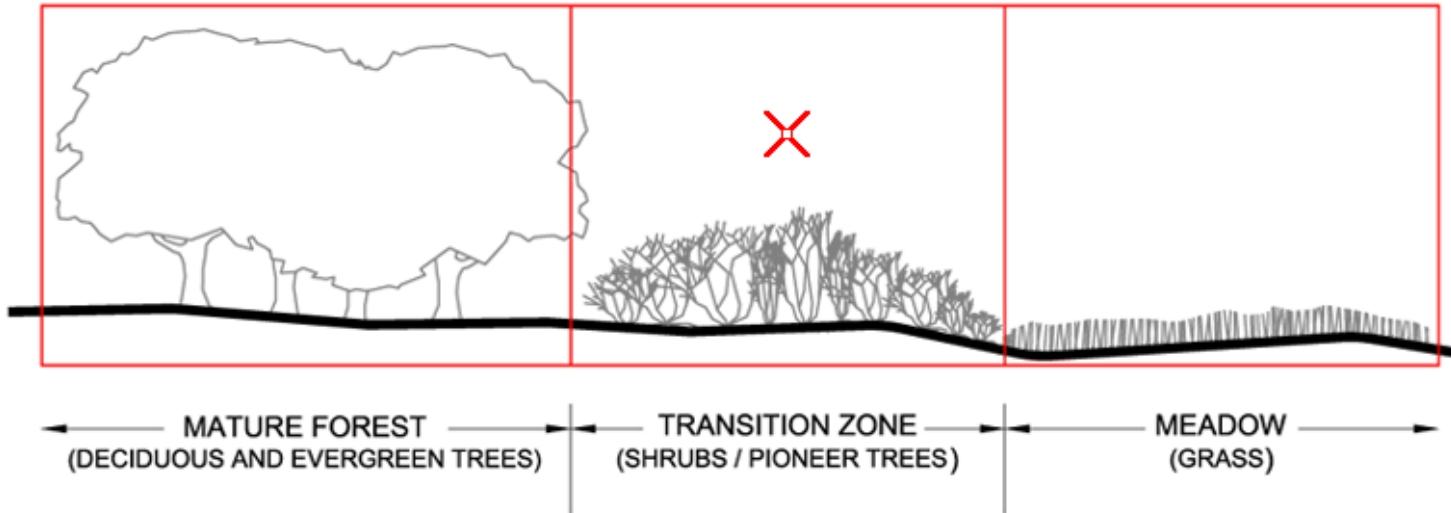
- transportation systems
  - the fragmentation of habitats
  - human demands on the ecosystem
  - the species of plants to be planted around new structures
- 



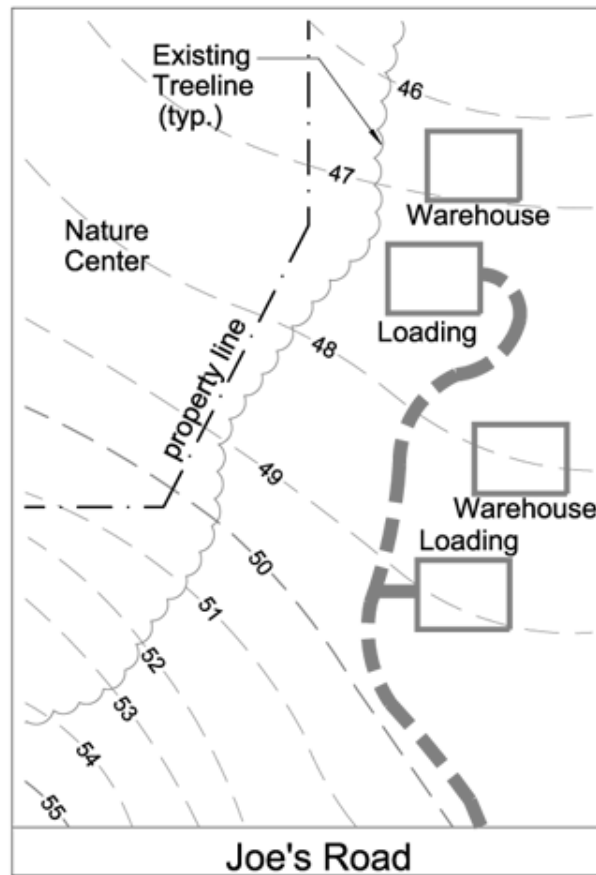
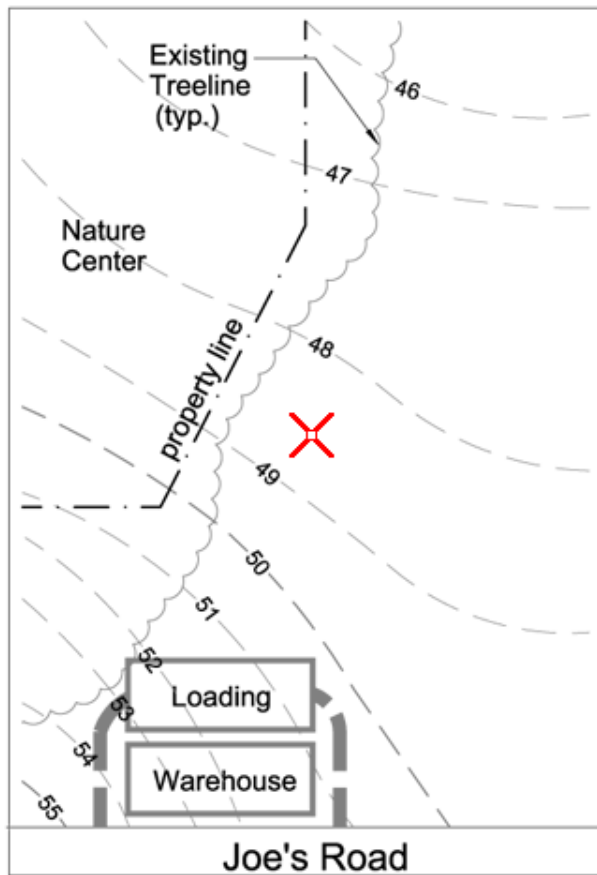
What are the primary purposes of arterial streets? *Choose 2 that apply.*

- serve as the link between local streets
  - move as much traffic as efficiently as possible
  - serve through traffic traveling relatively long distances
  - provide easy access to adjacent commercial development
- 

This illustrates a typical natural area. Identify the location that is the most active and sensitive wildlife habitat area. *Select the area in the boxes provided.*

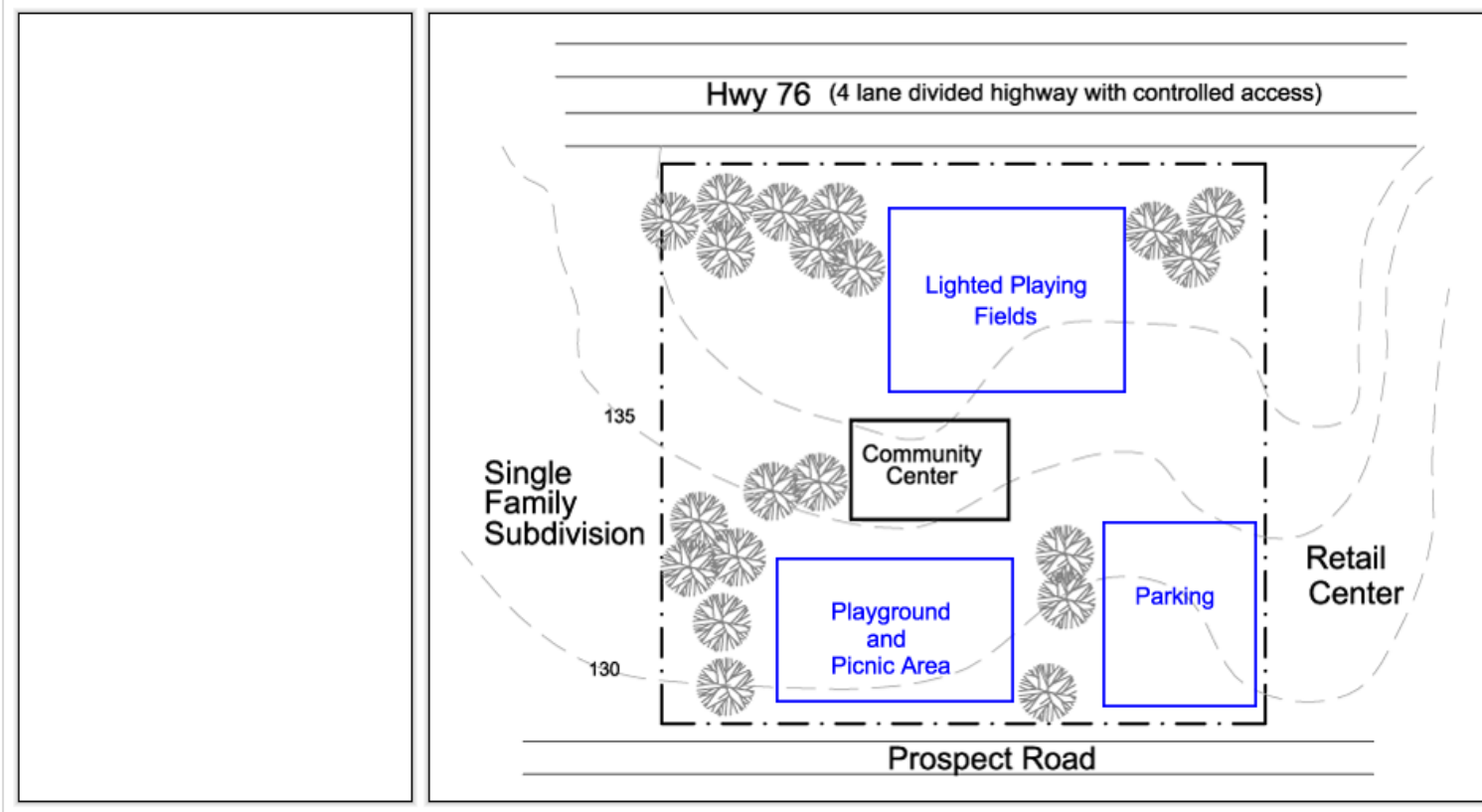


A warehouse project is planned on a site adjacent to an existing nature center. Which plan minimizes impacts to the nature center and environmental features?

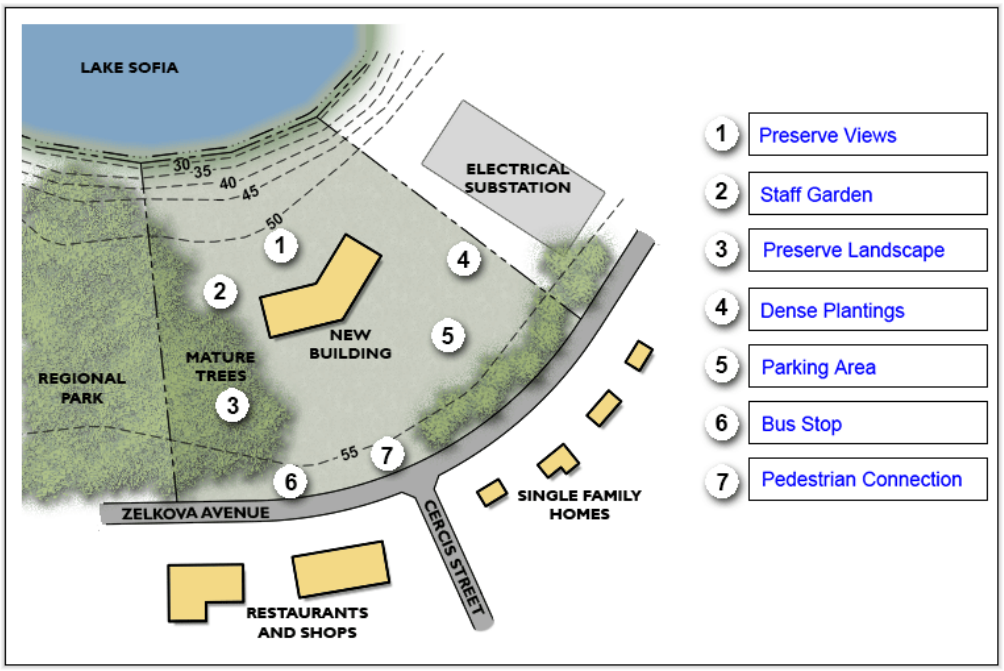


Show Exhibit

Refer to the exhibit. Prepare a design for a community center complex based on the client's functional relationship diagram. *Place elements to respond to on-site and off-site conditions.*

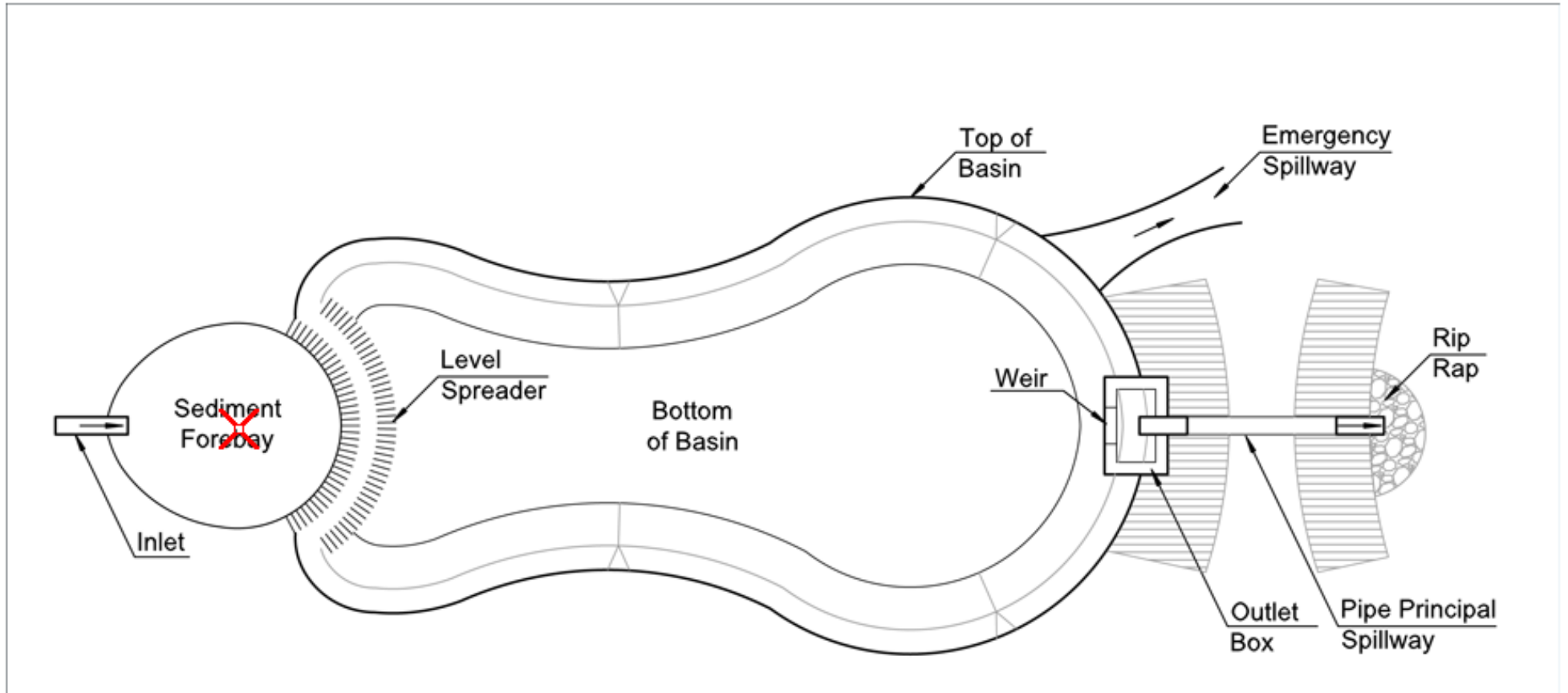


A software company will be constructing a new building for their offices on the site shown below. The new building will be a two-story structure with windows on all sides. Zelkova Avenue is a two lane collector with wide shoulders. The company has requested a preliminary concept plan to inform more specific design. Where should the site elements be placed? *Place the elements in their corresponding boxes.*

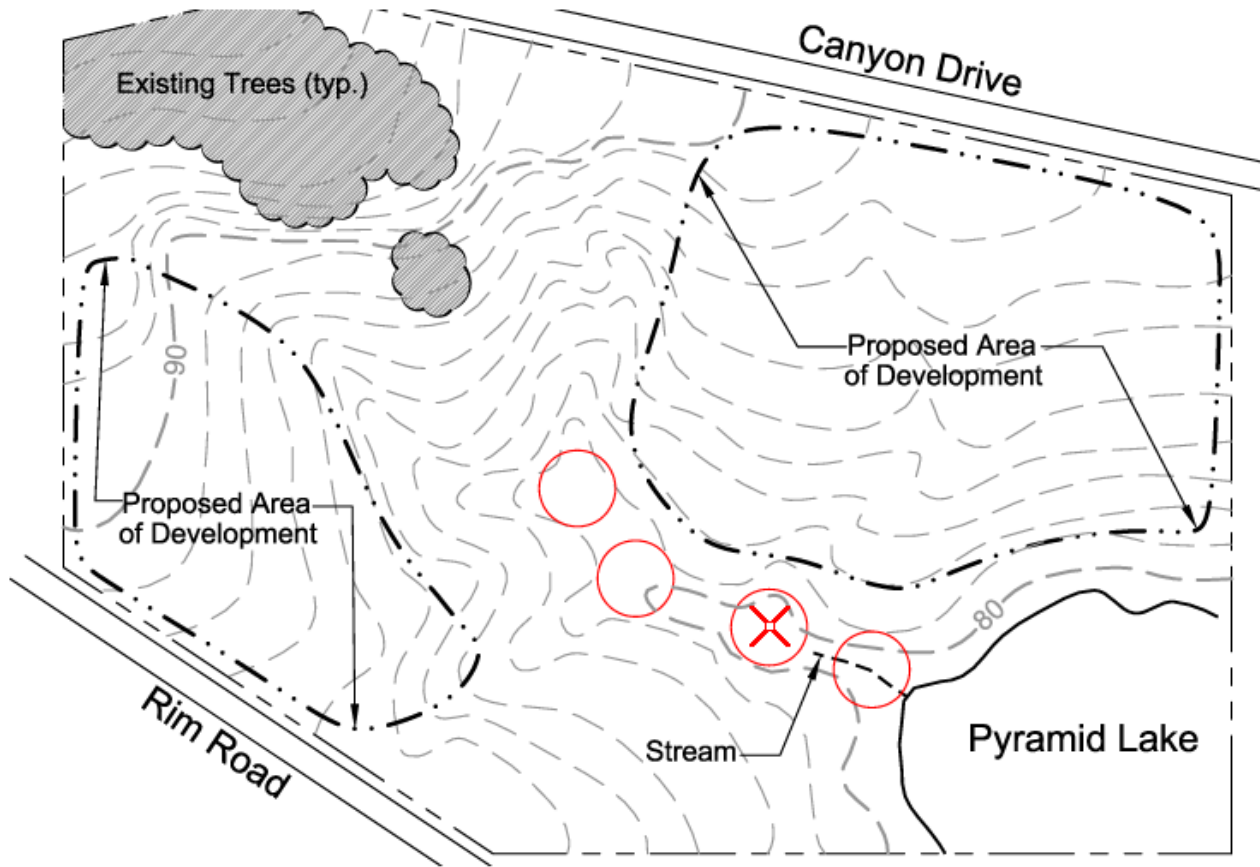




Identify the most appropriate area on the detention pond to have rip rap installed to prevent scour. *Select the area on the plan.*



What is the **BEST** location to construct a temporary sediment basin that will capture the greatest amount of runoff from the proposed development areas? *Select the location*



In what order should these construction activities occur from project initiation to substantial completion? *Place the activities in order.*

1 CLEAR AND GRUB SITE

2 INSTALL SEDIMENT AND EROSION CONTROLS

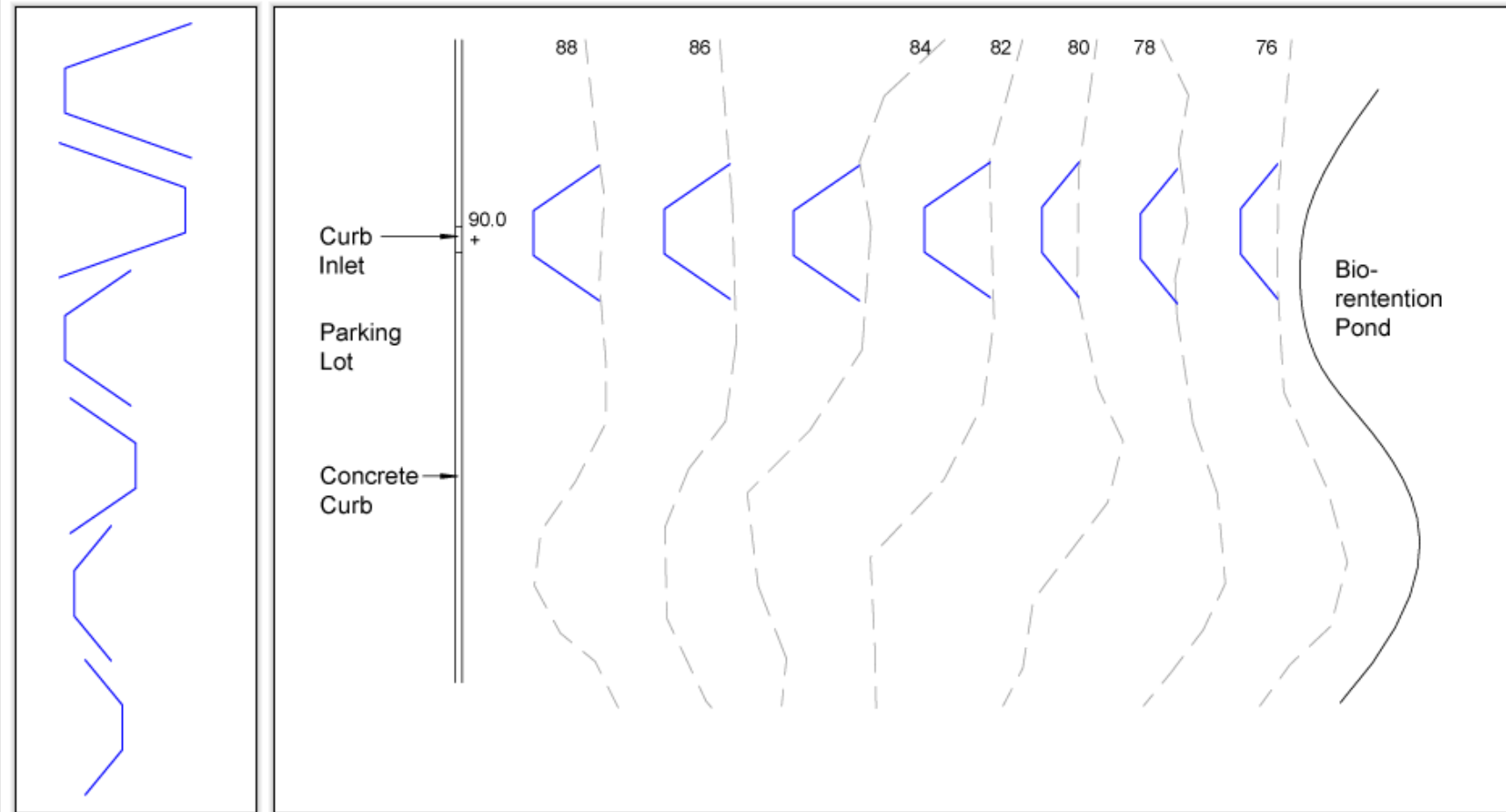
3 PERFORM MASS EARTHWORK

4 INSTALL SUBSURFACE UTILITIES

5 CONSTRUCT BUILDINGS AND SURFACE TREATMENTS

6 ESTABLISH TURF GRASSES

Design a 1-unit deep swale from the parking lot to the bioretention pond. *Place the appropriate contour(s) on the site plan.*



Place the appropriate contours on the site plan to maximize the amount of fill. *Place the contours.*

