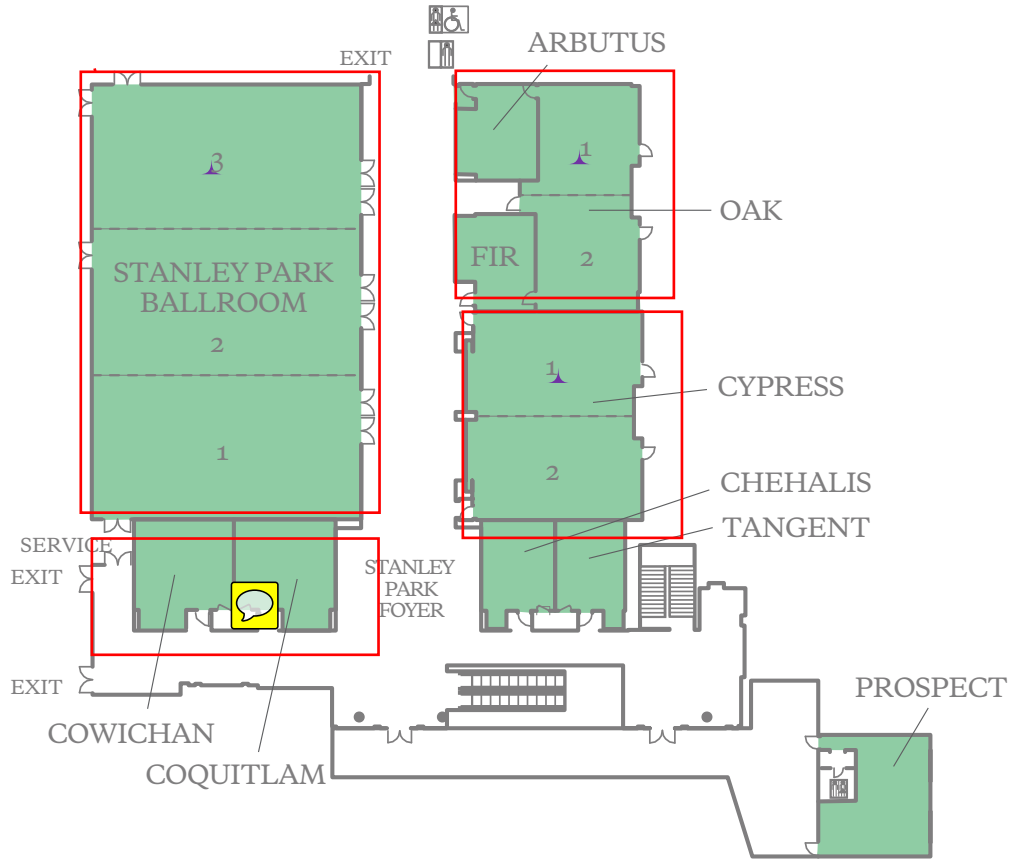


# MEETING SPACE CONFERENCE CENTRE, SECOND FLOOR

1601 Bayshore Drive  
Vancouver, British Columbia V6G 2V4 Canada  
T 604.691.6976 F 604.691.6959  
E bayshore.sales@westin.com  
westinbayshore.com

**THE WESTIN**  
BAYSHORE  
VANCOUVER



	DIMENSIONS	AREA (SQ. FT.)	MAX CEILING HEIGHT	THEATER	THEATER CHEVRON	CLASSROOM	CLASSROOM CHEVRON	BANQUET	BANQUET CHEVRON	CONFERENCE	U-SHAPE	HOLLOW SQ.	RECEPTION
■ ARBUTUS	18' X 21'	350	9.5'	18	10	6	—	10	—	6	—	—	36
■ CHEHALIS	23' X 15'	303	11.4'	9	—	6	—	10	—	6	—	—	31
■ COQUITLAM	23' X 22'	446	11.4'	21	12	12	—	10	—	6	—	—	46
■ COWICHAN	23' X 22'	448	11.4'	21	12	12	—	10	—	12	—	—	47
■ CYPRESS	40' X 47'	1,841	9.5'	136	114	60	72	120	110	30	33	54	193
■ CYPRESS 1	40' X 24'	922	9.5'	64	—	30	24	30	30	18	21	18	97
■ CYPRESS 2	40' X 24'	918	9.5'	64	38	30	—	30	30	18	21	18	96
■ FIR	18' X 21'	353	9.5'	16	—	6	—	10	—	12	—	—	37
■ OAK	27' X 51'	1,176	9.5'	84	48	21	—	40	40	36	33	36	123
■ OAK 1	27' X 25'	584	9.5'	36	22	12	—	20	20	12	12	12	61
■ OAK 2	27' X 25'	592	9.5'	36	24	27	—	20	—	12	12	12	62
■ PROSPECT	25' X 27'	582	7.9'	30	—	—	—	—	—	16*	—	—	—
■ STANLEY PARK BALLROOM	60' X 99'	5,931	15.9'	550	490	288	291	320	360	—	—	—	624
■ SALON 1	60' X 33'	1,965	15.9'	140	127	81	—	100	80	48	51	54	206
■ SALON 2	60' X 33'	1,998	15.9'	140	112	81	—	100	100	48	51	54	210
■ SALON 3	60' X 33'	1,968	15.9'	140	127	81	—	100	80	48	51	54	207
■ SALON 1 & 2	60' X 66'	3,963	15.9'	406	341	216	150	200	230	48	66	84	417
■ SALONS 2 & 3	60' X 66'	3,966	15.9'	406	352	216	150	200	230	48	66	84	417
STANLEY PARK FOYER	148' X 149'	5,767	15.9'	—	—	—	—	—	—	—	—	—	607

\* PERMANENT BOARDROOM SEATING CAPACITY

This document contains approximate measurements and square footage that are for illustrative purposes only. We cannot guarantee the floor plan accuracy or completeness, therefore encourage you to review the space to make sure it is suitable for your event.