






BCSLA Annual Conference

Back to the Garden

October 13 - 15, 2022

COAST COAL HARBOUR HOTEL
1180 West Hastings Street, Vancouver, BC

 British Columbia Society of
LANDSCAPE ARCHITECTS

VISIT US AT WWW.BCSLA.ORG   



Welcome

BCSLA ANNUAL CONFERENCE

It is our honour to welcome you to the British Columbia Society of Landscape Architects (BCSLA) 2022 Annual Conference and Showcase of Products and Services. Kennedy Stewart, City of Vancouver Mayor has officially proclaimed Friday, October 14, 2023 as "Landscape Architecture Day" in Vancouver in recognition of the profession.

A big thank you to all of our program sponsors and showcase exhibitors. With your generosity, the BCSLA can continue to offer valuable programs, services, and activities. Delegates are invited to visit all the booths to see the latest products and services and to thank our supporters. Special thanks to Belgard for supplying the lanyards, Cedar Crest Lands Ltd. for supporting the Clive Justice Book Awards to Newly Qualified Landscape Architects, Green Theory for supporting the Thursday Reception, Axis for supporting the Friday Luncheon, Wishbone Site Furnishings for supporting the BCSLA Awards Event, T. Moscone & Bros. Landscape Contractors for supporting the Friday Reception, and CDM2 Lightworks for supporting two of the presentations.

WE ARE GRATEFUL TO THE FOLLOWING BCSLA VOLUNTEERS

Katherine Dunster, Chair; Jose Gonzales, Cindy Hsu Becker, Kelly Kang, Qing Li, Nastaran Moradinejad, Bahareh Nassiri, Nancy Paul, Dorsai Sharif, Mickella Sjoquist, David Thompson, and Pearl Yip

Please note: This program is preliminary only. In the interests of ensuring the highest quality program content, session topics, scheduled times, titles, meeting rooms and speakers/presenters are subject to confirmation or change. Check www.bcsla.org for updates.

Cover: Connect Landscape Architecture

T. Moscone & Bros.
Landscape Contractors

Since 1948



Green Theory™



CONFERENCE PROGRAMME

DAY 1

DAY 1 | OCTOBER 13TH

4:30 PM - 6:00 PM

**SALUTE TO CLIVE JUSTICE - BCSLA
CLIVE JUSTICE BOOK AWARDS FOR
NEWLY QUALIFIED LANDSCAPE
ARCHITECTS**

Ballroom Stage

Proudly Sponsored by Cedar Crest Lands BC Ltd.

6:00 PM - 7:00 PM

**BCSLA & THE PROFESSIONAL
GOVERNANCE ACT**

Ballroom Stage

7:00 PM - 8:30 PM

**MEET AND GREET COCKTAIL
RECEPTION**

Ballroom and Foyer

Proudly Sponsored by Green Theory

DAY 2 MORNING

Friday, October 14

7:30 AM - 7:00 PM

**SHOWCASE OF PRODUCTS AND
SERVICES**

Ballroom & Foyer

7:30 AM - 8:30 AM

CONTINENTAL BREAKFAST

Ballroom & Foyer

8:30 AM - 9:00 AM

OPENING

Ballroom Stage

9:00 AM - 9:45 AM

DEBRA GUENTHER - KEYNOTE

Ballroom Stage

9:45 AM - 10:45 AM

COFFEE BREAK

Ballroom & Foyer

10:45 AM - 11:10 AM

BETTY LEPPS - URBAN RELATIONSHIPS

Ballroom Stage

11:15 AM - 11:40 AM

KEES LOKMAN - LIVING WITH WATER

Ballroom Stage

11:45 AM - 12:10 PM

**CAMERON OWEN, CHERIE XIAO,
SHERI DEBOER - TOWARDS A WATER
SENSITIVE CITY OF VANCOUVER: CITY
IN THE GARDEN**

Ballroom Stage

12:15 PM - 12:35 PM

**SHARON MACGOUGAN - STARTING A
MIYAWAKI POCKET FOREST GARDEN AT
A RICHMOND HIGH SCHOOL DURING A
PANDEMIC**

Ballroom Stage

DAY 2 AFTERNOON

DAY 2 OCTOBER 14TH		
<p>12:45 PM - 1:45 PM LUNCHEON Seymour & Grouse Rooms (4th Floor) Proudly Sponsored by Axis (formerly Metrix Professional Insurance Brokers)</p>	<p>1:45 PM - 2:15 PM DOMINIQUE MADILL - INTIMACY IN THE GARDEN: PLANT AND WIND Ballroom Stage</p>	<p>2:15 PM - 2:45 PM DR. CHRISTINE THURING - GARDENS THAT BUZZ: RESOURCES TO SUPPORT NATIVE BEES IN BC Ballroom Stage</p>
<p>2:40 PM - 3:05 PM CARMEN ROSEN – RESILIENCE + RESONANCE: STILL MOON OUTDOOR ARTS IN THE NEIGHBOURHOOD DURING THE PANDEMIC Ballroom Stage</p>	<p>3:05 PM - 3:30 PM AMY WALKER - SHOWING UP IMPERFECTLY: MENDING PUBLIC SPACE WITH OUR PRESENCE Ballroom Stage Proudly Sponsored by CDm2 Lightworks</p>	<p>3:30 PM - 4:00 PM NOTARIUS PRESENTATION Ballroom & Foyer</p>
<p>4:00 PM - 5:00 PM MAKEMOBILE WORKSHOP - AMY WALKER Grouse Room (4th Floor) COFFEE BREAK & SHOWCASE Ballroom & Foyer</p>	<p>5:00 PM - 6:00 PM BCSLA AWARDS PRESENTATION Ballroom Stage Proudly Sponsored by Wishbone Site Furnishings</p>	<p>6:00 PM - 8:00 PM RECEPTION: MEET AND GREET WITH SHOWCASE OF PRODUCTS & SERVICES Ballroom & Foyer Proudly Sponsored by T. Moscone & Bros. Landscaping Ltd.</p>

DAY 3

Saturday, October 15		
<p>7:30 AM - 12:00 PM SHOWCASE OF PRODUCTS AND SERVICES Ballroom & Foyer</p>	<p>7:30 AM - 8:30 AM CONTINENTAL BREAKFAST Ballroom & Foyer</p>	<p>8:30 AM - 9:00 AM BENJI EISENBERG - TOMORROW'S GARDEN MIGHT TASTE SALTY BUT YOU SHOULDN'T BE: HOW ECOLOGICAL KNOWLEDGE HELPS US ADAPT WITH A CHANGING COASTLINE Ballroom Stage</p>
<p>9:00 AM - 9:30 AM DUNCAN CHAMBERS - TOWARD AN AGROECOLOGICAL PERSPECTIVE IN LANDSCAPE ARCHITECTURE Ballroom Stage</p>	<p>9:30 AM - 10:00 AM SABA FARMAND - THE GARDEN OF THE 21ST CENTURY IS ON THE BOULEVARD: AND HOW DOCUMENTING AND PROMOTING BOULEVARD GARDENS ON INSTAGRAM LED TO THIS REALIZATION Ballroom Stage Proudly Sponsored by CDm2 Lightworks</p>	<p>10:00 AM - 11:25 AM DR. KATHY DUNSTER - FROM RAIN GARDEN TO FLOODPLAIN MANAGEMENT: REVIVING ANCESTRAL KNOWLEDGE DURING A PANDEMIC Ballroom Stage</p>
<p>10:45 AM - 11:15 AM WRAP-UP DISCUSSION PANEL Ballroom Stage</p>	<p>11:20 AM - 11:45 AM CONFERENCE CLOSING Ballroom Stage</p>	<p>12:00 PM - 1:30 PM LUNCHEON Seymour & Grouse Rooms (4th Floor)</p>

BCSLA ANNUAL CONFERENCE DAY 1 PRESENTATIONS

SALUTE TO CLIVE JUSTICE BCSLA CLIVE JUSTICE BOOK AWARDS FOR NEWLY QUALIFIED LANDSCAPE ARCHITECTS

Due to the pandemic, the Book Awards have been on hold. This event recognizes BCSLA Members and Registrants who became licensed in 2019, 2020 and 2021. The Awards have been renamed the Clive Justice Book Awards to Newly Qualified Landscape Architects in 2022. The late Clive Justice, MBCSLA#003, initiated this program many years ago by presenting a book to each new member at his own expense. BCSLA is proud to continue the tradition in his name. We are delighted to report that Clive's son, Douglas Justice, Associate Director UBC Botanical Gardens and BCSLA Honorary Member, will be present to share memories of his Father.



PAUL CRAVEN

SUPERINTENDENT OF PROFESSIONAL GOVERNANCE

Paul Craven was appointed the Superintendent of Professional Governance in June of 2019. He has been leading the implementation of the Professional Governance Act, ensuring that regulatory bodies have the tools necessary to regulate professions under the modern framework, and in the public interest. He has also worked to ensure there is a strong two-way dialogue between the regulatory bodies and the provincial government.

Mr. Craven will be presenting on the Professional Governance Act. The Office of the Superintendent of Professional Governance (OSPG) has completed its investigation (assessment) of the landscape architecture profession following a designation application from the BC Society of Landscape Architects (BCSLA) to consider inclusion of landscape architecture under the Professional Governance Act (PGA).

KEYNOTE SPEAKER



DEBRA GUENTHER

PARTNER, MITHUN

FASLA, MBCSLA, LEED AP, SITES AP

As a partner and landscape architect at Mithun, Deb has built a team that brings exceptional quality, critical thinking and award-winning design to projects. Deb is committed to connecting people with their surroundings and each other. She works on diverse projects — delivering conceptual design ideas firm-wide. Clients benefit from her ability to bring together emerging ideas in policy, practice and design.

Deb is a regular contributor to conversations on equity, resilience and climate change at venues such as Greenbuild, Living Futures, and the Urban Land Institute. Nationally recognized for her leadership on green infrastructure and ecosystem service issues, she was awarded the American Society of Landscape Architect's Presidents Medal in 2010.

ABOUT MITHUN

Mithun is an American firm with offices in Seattle, San Francisco, and Los Angeles. They integrate architecture, interiors and landscapes with urban design and planning to design innovative places. Mithun is one of two teams contracted in the Sea2City. The project explores approaches to coastal adaptation along Vancouver's False Creek, with a focus on decolonizing the design process.

Pdafsdfasdt

BCSLA ANNUAL CONFERENCE DAY 2 PRESENTERS



ELIZABETH (BETTY) LEPPS

DIRECTOR OF URBAN RELATIONSHIPS, VANCOUVER PARKS BOARD

As Vancouver Park Board's new Director of Urban Relationships, Betty brings a wealth of experience and education, and a deep compassion, humanity, and kindness to the role. She co-led the housing of over 280 folks from Strathcona Park in her previous role at BC Housing. Betty is the lead on the Park Board's work responding to the needs of people experiencing homelessness. She will be helping to fulfill the City's humanitarian responsibilities to those sleeping or sheltering in parks. Betty will also be working with partners to help improve the overall safety of all people using Vancouver parks. Betty holds an MA in Leadership from Royal Roads University and has a background in Childcare Leadership and Social Work. Her work on systemic change with vulnerable populations is highly lauded at municipal, ministerial, community and national levels.

KEES LOKMAN, MBCSLA

ASSOCIATE PROFESSOR AND CHAIR OF LANDSCAPE ARCHITECTURE, UBC
LIVING WITH WATER

Over the next 100 years, nothing will radically change the coastal built environment more than climate change and sea level rise. Half of the world's population lives within 100 km of coastlines, and three-quarters of all major cities are located in deltas and coastal areas. The coastal zone is home to some of the world's most valuable ecological and socio-economic systems. Many of these locations are already being transformed due to climate impacts and other large-scale human and biophysical processes. There is an urgent need for alternative policy and design solutions to rethink how we can live with water in the future. This presentation touches on the work done as part of Living with Water, which brings together a diverse, multidisciplinary team to help communities living along British Columbia's South Coast prepare and adapt to sea level rise and increased flood risks.

Kees Lokman is an associate professor at UBC SALA and chairs the landscape architecture program. He also serves as the UBC representative on the BCSLA Board of Directors.



Pdafsdfasdt

BCSLA ANNUAL CONFERENCE DAY 2 PRESENTERS

CAMERON OWEN, MBCSLA, MCIP, RPP; CHERIE XIAO, MBCSLA; SHERI DEBOER, URBAN ECOLOGIST
CITY OF VANCOUVER (COV) - GREEN RAINWATER INFRASTRUCTURE TEAM

TOWARDS A WATER SENSITIVE CITY OF VANCOUVER: CITY IN THE GARDEN

Vancouver is experiencing the pressures of population growth, climate change and stressed ecosystems. Water availability, rainwater pollution, overland flooding, sea level rise and droughts combined with a densifying city raises fundamental questions about how we manage water in an urban setting. One preferred approach is to lean on nature-based solutions to create a city in a garden. The Rain City Strategy transforms how the city manages rainwater in the built environment with the goals of improving water quality, resilience and livability through creating healthy urban ecosystems.

Cameron Owen graduated from the landscape architecture at UBC. He is a senior watershed planner with the City of Vancouver. Cameron specializes in green infrastructure and urban watershed planning.

Cherie Xiao graduated from the University of Toronto's MLA program. She is a Senior Project Manager at the City of Vancouver.

Sheri DeBoer is an urban ecologist with the City of Vancouver and holds an MLA degree from at the University of Calgary.



SHARON MACGOUGAN

PRESIDENT OF THE GARDEN CITY CONSERVATION SOCIETY

STARTING A MIYAWAKI FOREST GARDEN AT A HIGH SCHOOL DURING A PANDEMIC

The Garden City Conservation Society and Richmond Senior Secondary School's student "Green Team" are planting the first Miyawaki "Pocket Forest" in Western Canada. As we plant a forest, we build community within and around the forest. The pandemic, in many cases, pulled us apart but a forest garden brings us back together again. Loss of biodiversity is a worldwide problem that can benefit from local grassroots solutions. We've decided that it's better to take action instead of lamenting loss. Biodiverse "Pocket Forests" can exist in small spaces and are perfect in our parks and on other public lands. Birds and other wildlife will thank us for creating homes and providing food for them in our forests.

Sharon is President of the Garden City Conservation Society, director of the Tir-na-nOg Theatre School and Casa Meshiko Cultural Society; White Crane kung fu instructor, member of the International Council of Dance (UNESCO) and accredited teacher of Aztec Dance Sharon has a deep love of the natural world and is committed to the idea of "good measure", something that she learned from her father at a young age. Always give back a little bit more!



BCSLA ANNUAL CONFERENCE DAY 2 PRESENTERS

DOMINIQUE MADILL

LANDSCAPE DESIGNER, LOCI LANDSCAPE ARCHITECTURE + URBAN DESIGN

INTIMACY IN THE GARDEN: PLANT AND WIND

Getting back to the garden is a first step in removing human exceptionalism from the practice of landscape architecture. Under the pressures of climate crisis and environmental degradation, the patriarchal and western-colonial attitude of “human-as-best” is being derided by scholars as one of the most destructive attitudes framing our current conditions. As a practice that designs with the non-human – plants and land – landscape architecture is ideally placed to lead in practices that recognize and celebrate these more-than-human entities. What if plants were considered primary users in design? What type of landscapes would emerge if landscape architecture eliminated human-use from the agenda? My research investigates plant sentience and invisible architectures between plants to understand what forms can emerge if we stop considering the human as primary user. It is design for the garden only and about the garden itself – a conceptual exploration into possible post-human practices of landscape architecture.

Dominique is a Landscape Designer with an MLA from the University of Guelph and backgrounds in art history and horticulture from UBC and the UBC Botanical Garden. She is interested in the emotional landscapes of plants and the value of intimacy and tenderness within design.



DR. CHRISTINE THURING

GARDENS THAT BUZZ: RESOURCES TO SUPPORT NATIVE BEES IN BC

Pollinator gardens are gradually becoming common features in the urban landscape, which is great for biodiversity, for human well-being and for the biosphere. There is always room for improvement, of course, and this talk offers resources to help enhance pollinator garden design and maintenance. After introducing the diversity of BC's native bees, this presentation explores a range of tools that can help and guide well-informed plant selections and provisions for healthy forage and safe nesting.

Christine Thuring is an inter-disciplinary plant ecologist with a passion for enhancing conditions for biodiversity and healthy communities. As a plant person, Christine was always interested in native bees. She is a founding board member of the Native Bee Society of BC. Christine holds an MSc Horticulture (2005) from the Pennsylvania State University and a PhD Landscape (2016) from the University of Sheffield.

BCSLA ANNUAL CONFERENCE

DAY 2 PRESENTERS

CARMEN ROSEN

FOUNDING ARTISTIC DIRECTOR, STILL MOON ARTS SOCIETY

Carmen Rosen, Founding Artistic Director of Still Moon Arts Society, will share the creative projects they do in and around the Still Creek Watershed and Renfrew Ravine in East Vancouver, and the community response during the pandemic.



Carmen Rosen is an interdisciplinary artist, living and working on the un-ceded land of the Skwxwú7mesh, Səlilwətaʔ/Selilwitulh and xʷməθkʷəy̓əm Nations. She initiates creative community integrated projects that enrich and provide ongoing creative work for many artists and community members. She has an Art History BA from UBC, 1982, and diploma from Emily Carr College of Art and Design, 1987. Carmen has received the Vancouver Mayor's Arts Award, the Queen's Jubilee Award, and the BC Achievement Award for her art with the community. She is founding artistic director of Still Moon Arts Society. Through Still Moon and in collaboration with many community partners, Carmen initiates the Renfrew Ravine Moon Festival, and many Still Creek Art and Stewardship projects including the Colour Me Local Dye Garden where the community has been growing plants for natural dyes since 2019. In 2016 Carmen created a major public art installation "Still Here" at Skyway Towers Plaza on Kingsway in Vancouver. In 2017 she was an artist in residence at CACIS Centre for Art and Sustainability in Spain. In 2018 she was a co-lead artist for Birds on Parade for the International Ornithological Congress and the Vancouver Bird Festival. In 2019-2020 she collaborated with mycologist and artist Willoughby Arevalo on ephemeral eco-sculptures Mycelial Connections, Fruiting Bodies weaving willow that is inoculated and sprouts mushrooms as it decays and builds nutrients for the soil. Arevalo and Rosen's current project is Beaver Pond(er)ing Lodging where they are working with living willow to weave a giant living willow beaver and an RV on the banks of Still Creek as a commentary on habitat loss for wildlife and for humans in the city.

AMY WALKER

MAKEMOBILE DESIGNER AND COMMUNITY FACILITATOR

SHOWING UP IMPERFECTLY: MENDING PUBLIC SPACE WITH OUR PRESENCE - PROUDLY SPONSORED BY CDM2 LIGHTWORKS

We do not have to know how it's all going to go. We can trust in ourselves to figure it out when we get there - and in this time of transition even moreso, we need to trust that we can look to ourselves and communicate with each other and make the world as we go, organically, responding to what is happening in each moment. This is finding comfort within chaos - to trust that when we gather with intention - together we can talk, sense, listen, and choose a course. Playing music and making art sometimes feel like a realm for professionals - and many people shy away from singing - or painting along... because "doing it wrong" is mortifying. But if we are to grow we need to be brave - and learn how to surf and learn and make mistakes - so let's practice some Brave, Kind, yet still critical spaces... where we can Show Up Imperfectly - and build the ship / make the world as we sail / live in it.

Amy 'Biker' Walker facilitates sociable making with the Makemobile, an electric-assisted bakfiets / mobile arts and crafts studio. She designs hands-on activities to bring people together and make creative connections. From 2001 - 2010, Amy co-published Momentum, the magazine for self-propelled people, a Vancouver-based community-created bike culture magazine distributed across North America. Educated at Sheridan College in crafts & design, Amy experiments with hand-making and repairing of all kinds. She has created works and taught workshops in felting and textiles, sewing clothing, mending, zine-making, drawing & painting, collage, basketry, photography, and writing. Since 1987, Amy has been aware of climate change and trying to live a low-GHG life while encouraging others to adopt climate solutions like cycling for transportation. But it's clear that personal responsibility actions are not enough - and we need peer support as we demand governments and corporations take immediate action to end the fossil fuel proliferation and adopt less harmful systems for living. We need to be writing and painting and singing and performing the stories that will help guide us through this time of great change. We find those stories when we gather creatively and listen from the heart.

www.makemobile.ca

www.instagram.com/makemobilefun



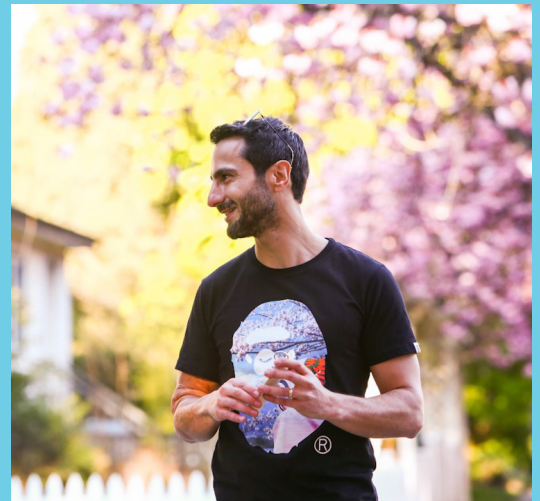
BCSLA ANNUAL CONFERENCE DAY 3 PRESENTERS

SABA FARMAND, MBCSLA

LANDSCAPE DEVELOPMENT SPECIALIST, CITY OF VANCOUVER

THE GARDEN OF THE 21ST CENTURY IS ON THE BOULEVARD: AND HOW DOCUMENTING AND PROMOTING BOULEVARD GARDENS ON INSTAGRAM LED TO THIS REALIZATION

In these times, where land ownership is less and less attainable, boulevard gardens help people satisfy their instinctual need to care for and tend to land, all the while expressing themselves creatively. These gardens have personalities that most public landscapes do not have. At the same time, boulevard gardens can improve the environmental performance of cities, promote and increase access to nature in urban areas, enhance streetscapes and neighbourhood character, provide opportunities for urban agriculture, and encourage neighbourliness and community pride. This presentation showcases selected images from Saba's photographic research of boulevard gardens - a project that started a few years ago.



DR. KATHY DUNSTER, MBCSLA, FCSLA

KPU INSTRUCTOR OF URBAN ECOSYSTEMS

FROM RAIN GARDEN TO FLOODPLAIN MANAGEMENT: REVIVING ANCESTRAL KNOWLEDGE DURING A PANDEMIC

We are designers and planners! We can find blue/green infrastructure solutions that help us adapt to climate change. We can help communities retreat from rising tides. We can provide for pollinators so that we can feed ourselves. What happens to projects when lockdown prevents workers from caring for all those good design and planning intentions? How long does it take to lose ground and recover from inactive maintenance? What ancestral knowledge and skills can we teach and apply to get back on track?

Dr. Kathy Dunster, FCSLA, MBCSLA is lead faculty for the Bachelor of Horticulture Science Urban Ecosystems program at Kwantlen Polytechnic University, which emphasizes applying the theory of urban ecosystems and decolonization to the hands-on experiential management of the Langley campus uplands, wetlands, and salmon stream. She also currently chairs the BCSLA Continuing Education Committee.



BCSLA ANNUAL CONFERENCE DAY 3 PRESENTERS

BENJI EISENBERG

UBC MALA 2022 GRADUATE

TOMORROWS GARDENS MIGHT TASTE SALTY, BUT YOU SHOULDN'T BE: HOW CAN ECOLOGICAL KNOWLEDGE HELP US ADAPT WITH A CHANGING COASTLINE?

The land we call "British Columbia" has over 25,000 kilometers of coastline. The idea of a "garden", a technology which synergizes human cultures with ecological systems (also called an eco-cultural technology), has existed on this coast since time immemorial. However, the coastline is changing and so is the human relationship to it; therefore, humans, and our relationships, must learn to adapt with the coastline. How can ancient and emerging eco-cultural technologies be interwoven to help mitigate the effects of climate change while supporting spaces for intergenerational knowledge sharing? Furthermore, how can this integration provide stable food sources, genetic species diversity, and sea level rise adaptability? Ultimately, how can landscape architects and designers support the health of both humans and non-humans on a changing coastal landscape?



Benji grew up on ancestral Massa-adchu-es-et Nation territory in the winding estuaries of coastal Massachusetts, United States digging for clams and tapping sugar maples. Benji earned their MSc in landscape architecture at UBC with a focus on understanding how coastal adaptation can support food security and ecological knowledge preservation and has spent the last year working with Tsleil-Waututh Nation on the Nation's ongoing Shoreline Adaptation Project which aims to integrate coastal adaptation with Ecological Knowledge preservation.



DUNCAN CHAMBERS

UBC MLA 2021 GRADUATE, CITY BEET FARM CO-OPERATOR

TOWARD AN AGROECOLOGICAL PERSPECTIVE IN LANDSCAPE ARCHITECTURE

170 years ago, in 1852, a 30-year-old gentleman farmer, Frederick Law Olmsted, published Walks and Talks of an American Farmer in England, documenting a trip that eventually inspired his vision as a landscape architect. Lawrence Halprin cited his experience living on a kibbutz as formative and inspirational for his Sea Ranch design. While this search for origins represents a kind-of going back to the garden, it also presents an opportunity to increase the relevance and visibility of the landscape architecture professions now and in the future. I believe that an agroecological perspective in landscape architecture could help meet human needs for provisioning ecosystem services – food, fuel, and fibre – without compromising other services, and could even improve the experiential and aesthetic value provided by designed landscapes. Duncan focuses on provisioning ecosystem services because they are the most concrete, least abstract examples of what the landscape provides to meet human needs, and every culture in history has had their own unique means of interacting with the landscape in order to eat, build, weave, and warm themselves, whether sustainably or irrationally.

Duncan graduated from the MLA program at UBC in 2021 and currently co-operates City Beet Farm, a small scale urban farm.



Office of the Mayor
CITY OF VANCOUVER
BRITISH COLUMBIA

Proclamation

"LANDSCAPE ARCHITECTURE DAY"

WHEREAS The British Columbia Society of Landscape Architects (BCSLA) is the professional organization that regulates the profession of landscape architecture in BC according to provincial statute;

AND WHEREAS The scope of the landscape architecture profession encompasses the design of anything imaginable in the space around, between, or even on top of buildings, to transform the face of urban and rural spaces in BC and around the globe;

AND WHEREAS There is a growing appreciation of the work done by landscape architects who serve an important role in environmental protection by designing and implementing projects that respect the needs of people and of the environment while ensuring health, safety, and welfare of the public;

AND WHEREAS The global pandemic severely disrupted personal and collective notions of normal social life. Lockdowns and "stay home" orders were mandated in the spring of 2020 to slow the spread of the virus. Now local parks and open spaces previously unnoticed were suddenly "discovered" and helped ground people in urban nature:

NOW, THEREFORE, I, Kennedy Stewart, Mayor of the City of Vancouver, DO HEREBY PROCLAIM Friday, October 14, 2022 as

"LANDSCAPE ARCHITECTURE DAY"

in the City of Vancouver.

Kennedy Stewart
MAYOR



BCSLA ANNUAL CONFERENCE SPONSOR AND SHOWCASE VENDORS

