

PASSION CHALLENGE CHANGE

2023 BCSLA ANNUAL CONFERENCE

May 11-13, 2023

Grand Ballroom Paradox Hotel Vancouver,
1161 West Georgia Street, Vancouver, BC



British Columbia Society of
LANDSCAPE ARCHITECTS

VISIT US AT WWW.BCSLA.ORG



For complete registration details visit:
<https://tinyurl.com/3776982n>.

Welcome!

BCSLA ANNUAL CONFERENCE & AGM

It is our pleasure to welcome you to the British Columbia Society of Landscape Architects (BCSLA) 2023 Annual Conference, Showcase of Products and Services and Annual General Meeting. We have curated a unique conference program featuring on-the-ground stories and contributions, from members and allied professionals, that express their passion for the profession, the challenges they've overcome to do great work and their response to changes they have seen, or foresee, in society and the profession.

A big thank you to all our program sponsors and showcase exhibitors. With your generosity, the BCSLA can continue to offer valuable programs, services, and activities. Delegates are encouraged to visit all the booths to see the latest products and services and to thank our supporters.

Giving Back

The BC Society of Landscape Architects is pleased to recognize the contributions of the many participating presenters at the 2023 BCSLA Conference while giving back to the community. In lieu of traditional presenter gifts, we will donate funds on their collective behalf to **Landscape Architecture Canada Foundation (LACF)**. The funds will be directed to programs with a BC focus.



LANDSCAPE ARCHITECTURE CANADA FOUNDATION
FONDATION D'ARCHITECTURE DE PAYSAGE DU CANADA

For over 30 years, LACF has provided resources to support and assist landscape architects and others to use their unique skills to make our world a better place. Your contribution provides critical financial support for LACF programs and initiatives aimed at creating a more sustainable, equitable, and resilient future for all. The impact of your investment in LACF is far-reaching.

WE ARE GRATEFUL TO THE FOLLOWING BCSLA VOLUNTEERS

Patrick Mooney, Chair, Sonia Jin, Quinn Howard, Samantha Hunt-Weeks, Lucia Li, Dave Thompson, Tenille Thompson and Angela Zhang

The BCSLA offices are located on unceded Coast Salish territories of the x̱məθkʷəy̓əm (Musqueam), Skwxwú7mesh (Squamish), and sə̌ilwətaʔ (Tsleil-Waututh) First Nations. We recognize and respect the history, languages, and cultures of the First Nations, Métis, Inuit, and all First Peoples of Canada, whose presence continues to enrich our organization, our lives and our country.

CONFERENCE PROGRAMME

DAY 1

For complete registration details visit: <https://tinyurl.com/3776982n>.

THURSDAY, MAY 11TH

REGISTRATION REQUIRED FIELD TRIPS

- **SKETCHING DOWNTOWN VANCOUVER**
with Derek Lee and Bei Jiang
- **TALKING TREES INDIGENOUS
WALKING TOUR OF STANLEY PARK**
with Candace Campo
- **GREEN INFRASTRUCTURE AND THE
LIVABLE PUBLIC REALM: A WALKING
TOUR OF BRENTWOOD TOWN CENTRE**
with Ian Wasson

3:30 - 4:15 PM

*Paul DeGreeff and Kate Haines,
Superintendent of Professional
Governance*

**BCSLA & THE PROFESSIONAL
GOVERNANCE ACT
(ALSO AVAILABLE ONLINE)**

4:30 - 5:00 PM

*Kees Lokman, Paul Sangha,
Patrick Mooney*

JOHN WESLEY NEILL MEDAL AWARDS

5:00 PM - 6:30 PM

**MEET AND GREET
COCKTAIL RECEPTION**

DAY 2 MORNING

For complete registration details visit: <https://tinyurl.com/3776982n>.

FRIDAY, MAY 12th

7:30 AM - 7:00 PM

**SHOWCASE OF PRODUCTS
& SERVICES**

7:30 AM - 8:30 AM

**CONTINENTAL BREAKFAST
& SHOWCASE OF PRODUCTS
& SERVICES**

8:30 AM - 9:00 AM

**OPENING & FIRST NATIONS
LAND ACKNOWLEDGMENT**

Patrick Mooney

9:00 AM - 9:30 AM

KEYNOTE
Colleen Mercer Clarke
**NATURE IN PRACTICE –
LANDSCAPE ARCHITECTS
CREATING A BETTER FUTURE
FOR ALL**

9:30 AM - 10:00 AM

Scott Murdoch
**FROM DITCH TO SALMON
STREAM: A NATURE-BASED
SOLUTION FOR BC TRANSIT
HANDYDART**

10:00 AM - 10:30 AM

**COFFEE BREAK
AND SHOWCASE OF
PRODUCTS & SERVICES**

FRIDAY, MAY 12TH — MORNING CONTINUED

10:30 AM - 11:00 AM

Beatriz Mendes, Shasta McCoy & Catherine Berris

INSPIRED GENERATIONS: 3 GENERATIONS OF LAs ILLUSTRATE WHAT INSPIRES THEM

11:00 AM - 11:30 AM

Stephanie Aitken and Christopher Szymberski

MAKING ADAPTIVE AND DIVERSE MEADOWS IN THE OKANAGAN VALLEY

11:30 AM - 12:00 PM

Margot Long

12 YEARS LATER: WHAT WE LEARNED FROM SOUTH-EAST FALSE CREEK AND HOW THAT HAS CHANGED THE WAY WE LOOK AT PROJECTS

12:00 PM - 12:30 PM

Kevin Johnson

STUDYING THE FORGOTTEN TRIBUTARIES: RE-IMAGINING FLOOD CONTROL INFRASTRUCTURE AS PUBLIC SPACE IN LOS ANGELES

12:30 PM - 2:00 PM

BCSLA AWARDS LUNCHEON

DAY 2 AFTERNOON

FRIDAY, MAY 12TH

2:00 PM - 2:30 PM

Greg Smallenberg and Chris Phillips

30 YEARS AND COUNTING: GREG AND CHRIS WILL DISCUSS THE CHALLENGES PRESENTED IN MULTIPLE PROJECTS AND THE ROLE LA IN A CHANGING WORLD

2:30 PM - 3:00 PM

Mark van der Zalm, Micole Wu, Phoenix Chan, David Jerke

HUB: DEVELOPING A SUSTAINABLE, WALKABLE, MULTIPHASED TOD IN CITY-CENTRE SURREY

3:00 PM - 3:30 PM

Connor Redman and Cherie Xiao

RAIN CITY STRATEGY IN ACTION: WOODLAND AND 2ND BIOSWALE

3:30 PM - 4:00 PM

COFFEE BREAK AND SHOWCASE OF PRODUCTS & SERVICES

4:00 PM - 4:30 PM

Jack Tupper

VANCOUVER MEADOWS — ALTERNATIVE MANAGEMENT OF URBAN PARKS

4:30 PM - 5:00 PM

Tamara Bonnemaïson

THE CHALLENGES OF DESIGNING ECOLOGICALLY FUNCTIONING LANDSCAPES: WALKING THE TALK IN THE COWICHAN DISTRICT HOSPITAL REPLACEMENT PROJECT.

5:00 PM - 7:30 PM

WELCOME RECEPTION

SATURDAY, MAY 13TH

7:30 AM - 12:00 PM

**SHOWCASE OF PRODUCTS
AND SERVICES**

7:30 AM - 9:00 AM

CONTINENTAL BREAKFAST

**SHOWCASE OF PRODUCTS
AND SERVICES**

9:00 AM - 9:30 AM

Eli Enns – KEYNOTE

**RECONCILING PEOPLE AND PLACES:
LANDSCAPE ARCHITECTURE AND
IPCAS (INDIGENOUS PROTECTED AND
CONSERVED AREAS)**

9:30 AM - 10:30 AM

**Jeremy Plotkin, Sara Barron,
Mickella Sjoquist, Eli Enns &
Patrick Mooney (MODERATOR)**

**PANEL DISCUSSION:
IMPLEMENTING JEDI**

10:30 AM - 11:00 AM

**COFFEE BREAK AND SHOWCASE
OF PRODUCTS & SERVICES**

11:00 AM - 11:50 PM

**Cease Wyss, James Harry,
Chelsey Schmidtke (MODERATOR)**

**INDIGENOUS DESIGN AND
CULTURAL INTEGRATION IN
PROJECTS IN THE LOWER MAINLAND**

11:50 AM - 12 PM
CONFERENCE CLOSING

12:00 PM - 1:30 PM

LUNCHEON

Kees Lokman

**VALUES-BASED APPROACHES
TO NATURE-BASED COASTAL
ADAPTATION SOLUTIONS**

1:45 PM

**“CLIVE JUSTICE BOOK AWARDS
TO NEWLY QUALIFIED LANDSCAPE
ARCHITECTS”**

2:00 PM

AGM SIGN-IN

2:30 PM - 4:00 PM

2023 ANNUAL GENERAL MEETING

**FOR COMPLETE REGISTRATION
DETAILS VISIT:
[HTTPS://TINYURL.COM/3776982N](https://tinyurl.com/3776982n)**

4:00 PM - 5:00 PM

BCSLA HAPPY HOUR

Please note: This program is preliminary only. In the interests of ensuring the highest quality program content, session topics, scheduled times, titles, meeting rooms and speakers/presenters are subject to confirmation or change. Check www.bcsla.org for updates.

TOURS

To save on costs please bring your own lunch, soft drink and snack. Dress for the seasonal weather, water proof or repellent outerwear, layered clothing, good walking shoes with traction, water bottle.

Masks are optional. All Tour participants must sign the BCSLA

Walking Tour Liability Waiver Form

TOUR #1

TALKING TREES TOUR –
INDIGENOUS-LED NATURE WALK IN
STANLEY PARK

Arrive By: 11:45 AM
Tour: 12:00 PM NOON
Duration: 1.5 Hours
Length: 2.2 KM

Nature enthusiast, Candace Campo, was trained as an anthropologist and schoolteacher. She shares her outdoor education background and culture made possible by growing up on the land and being taught the stories and history of her people by her parents and elders in the community. Each plant, each tree has its own special story. Explore Vancouver's iconic Stanley Park, Beaver Lake, with our local Indigenous guide – cultural ambassador who will highlight how the local trees and plants of the Pacific Northwest have been harvested by our people for food, medicine and technology for thousands of years. Our guides are members of local Indigenous communities and the surrounding region. They will share our ecological practices, ancient and contemporary history, stories, legends and Indigenous ways of living with you. Upon confirmation of your registration, you will receive complete details.

TOUR #2

SKETCHING DOWNTOWN
VANCOUVER WITH DEREK LEE AND
BEI JIANG

Arrive By: 11:45 AM
Tour: 12:00 PM NOON
Duration: 1 Hour

Bring your favourite drawing materials and join Derek Lee, MBCSLA, and Bei Jiang on this urban sketching excursion in downtown Vancouver. The group will walk to a nearby destination for a 60-minute urban sketching experience. Since 2004 Derek has worked with PWL clients and communities around the world to create vibrant places. As a landscape architect and urban designer with a Bachelor of Landscape Architecture from UBC, Derek brings expertise from years of work across North America, Asia, the UK, and the Middle East. Bei Jiang has a talent for sketching projects and spaces. Upon confirmation of your registration, you will receive complete details.

TOUR #3

GREEN INFRASTRUCTURE AND
THE LIVABLE PUBLIC REALM:
A WALKING TOUR OF BRENTWOOD
TOWN CENTRE

Arrive By: 11:45 AM
Tour: 12:00 PM NOON
Duration: 1.5 Hours

Join Ian Wasson, MBCSLA, FCSLA, to learn about the transformation of the Brentwood Town Centre from auto oriented retail to mixed-use high-density spaces. The evolution of the Brentwood Town Centre led to one of the most remarkable real-estate transactions in the history of Metro Vancouver. The subsequent redevelopment of one of Canada's oldest malls into one of its most transformative; town centre in the region. Upon confirmation of your registration you will receive complete details.

For complete registration details visit: <https://tinyurl.com/3776982n>.

THURSDAY, MAY 11, 2023: 3:30 pm to 4:15 pm

BCSLA AND THE PGA – DRAFT TRANSITION PLAN

The BCSLA Board of Directors has actioned the transition from our current Architects (Landscape) Act to the new Professional Governance Act (PGA) through the PGA Working Group. The Working Group is led by Paul DeGreeff and Jacqueline Lowe, with support from several current Board members and other committed BCSLA volunteers. Kate Haines, Superintendent of Professional Governance and Paul DeGreeff will provide a brief overview of the BCSLA's original application to the Office of the Superintendent of Professional Governance (OSPG) for inclusion in the PGA and will summarize recent transition planning work of the PGA Working Group. The PGA transition will require many hours of work over the next two years by the BCSLA Board of Directors and all BCSLA committees, working groups and task forces – volunteers are needed and welcome!

ALSO AVAILABLE ONLINE

FOR COMPLETE REGISTRATION
DETAILS VISIT:

[HTTPS://TINYURL.COM/3776982N](https://tinyurl.com/3776982N).

PAUL DEGREEFF MBCSLA

Paul DeGreeff, MBCSLA, joined the board in the summer of 2022 as the Vancouver Island Chapter representative. He was appointed chair of the PGA Working Group in the fall of the same year. The BCSLA Board of Directors disbanded the Regulatory Review Task Force (RRTF) prior to forming the PGA Working Group. An excellent PGA application completed by the volunteers of the RRTF has provided a strong foundation for the PGA Working Group. The transition process is expected to take at least two years.



KATE HAINES SUPERINTENDENT OF PROFESSIONAL GOVERNANCE

Kate Haines was appointed the Superintendent of Professional Governance in January of 2023. She has served as a member of OSPG's executive team since April 2020, most recently as Deputy Superintendent. In this capacity, she developed and implemented OSPG's performance review program, taking a phased approach to assessing how regulatory bodies are already meeting or planning to meet the Standards of Good Regulation.



THURSDAY, MAY 11, 2023: 4:30 pm to 5:00 pm

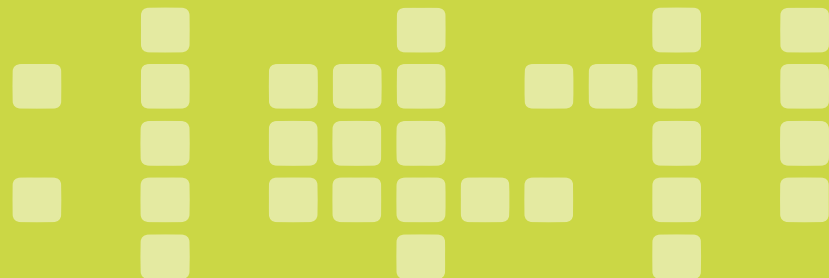
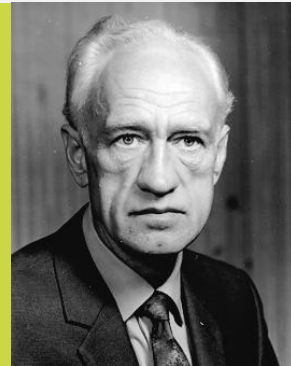


JOHN WESLEY NEILL MEDAL PRESENTATION

The UBC School of Architecture and Landscape Architecture, with the BCSLA, will re-establish the medal that previously accompanied the Dr. John Wesley Neill Prize in Landscape Architecture. With the support from Ron Kellett, UBC SALA Director and Professor and Paul Sangha, MBCSLA, FCSLA, they tracked down the supplier and the medals were cast. UBC SALA has paid for the medals and will continue to support the costs into the future. UBC SALA and BCSLA welcome this opportunity to retroactively present the medal to those winners who did not receive the medal from 2003 – present. Kees Lokman, BCSLA, Paul Sangha, MBCSLA, FCSLA and Patrick Mooney, LMBCSLA, FCSLA, FCELA, will be on hand to present the medal. Thank you UBC SALA and Paul Sangha!

JOHN WESLEY NEILL LMBCSLA #002, FCSLA (1916-1999)

John Wesley Neill was one of the first landscape architects in BC. In 1949, Neill joined the Horticulture Department at UBC. As UBC prepared to launch its new program in landscape architecture (established in 1970), Neill was integral to shaping the program, and in 1980, became its director. During those remarkable decades, he and Philip Tattersfield convinced the BC Legislature to pass the provincial Landscape Architect's Act (1968) and helped found the BCSLA (1966). Neill became its first President, serving for five years. BCSLA established the John Wesley Neill Medal, awarded to an outstanding graduate in Landscape Architecture each year.



THURSDAY, MAY 11, 2023: 5:00 pm to 6:30 pm

MEET AND GREET COCKTAIL RECEPTION

This is an excellent opportunity to join colleagues and friends for an informal gathering. Meet the BCSLA Board of Directors and the PGA Working Group volunteers to learn more about the Professional Governance Act. Congratulate the John Wesley Neill Medal recipients and share a story or two!

KEYNOTE: COLLEEN MERCER CLARKE

NATURE IN PRACTICE – LANDSCAPE ARCHITECTS CREATING A BETTER FUTURE FOR ALL

As both a coastal ecologist and a landscape architect, Colleen is an advocate for interdisciplinary approaches to the sustainable and resilient integration of nature and society. Before completing her doctorate in 2010, Colleen had over 30 years experience in industrial and commercial planning and design, and in the restoration of contaminated sites. Throughout her career she has sought, promoted and fought for, nature-based approaches to development. Currently, through her work to advance action on the crises posed by both climate change and biodiversity loss, Colleen is a strong advocate for the rights of nature and for the shared benefits of nature-based solutions to modern world problems.

COLLEEN MERCER CLARKE

M.SC., M.L.A., PH.D., FCSLA

In addition to on-going national and international advisory roles on climate policy and action, Colleen was the founding Chair of the CSLA Committee on Climate Action, Chair of the International Federation of Landscape Architect's Working Group on Climate Change and Chair of the Committee on Professional Practice and Policy (IFLA). Currently, she serves as the IFLA Special Envoy and Voting Member to the International Union for the Conservation of Nature. In 2021, she was elected to the Board of the Canada Committee for the IUCN, where she also chairs the CC-IUCN Committee on Climate Change.



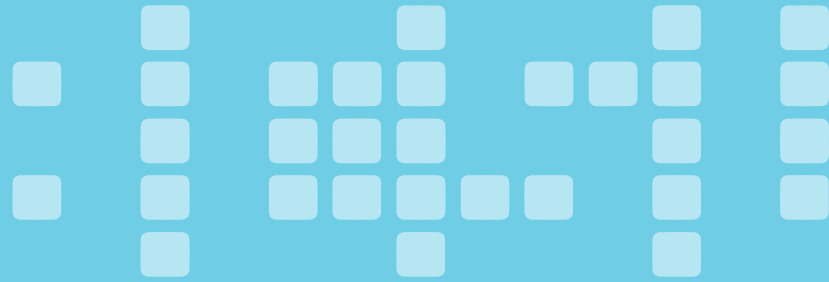
FRIDAY, MAY 12, 2023: 9:30 am to 10:00 am

PRESENTER:

SCOTT MURDOCH

RESTORATIVE LANDSCAPE DESIGN — BC TRANSIT HANDYDART NATURE-BASED SOLUTION FROM DITCH TO SALMON STREAM

The site of BC Transit's new electric bus facility in Victoria was a highly disturbed site due to the construction of the island highway expansion in the 80's. The site was used to dispose of excess fill and rock. A small stream through the middle of the site was realigned into an armoured channel. 40 years later the channel was overgrown with invasive plants and was poor fish habitat. The design of the new facility required that the ditched be moved or piped under the facility. MDI helped convince BC Transit that there was value in rebuilding the stream with riffles and pools and that it could become a ecological asset. In addition to designing and overseeing the construction of the stream, MDI developed an integrated rainwater management plan that uses rain gardens to treat runoff from 100% of the proposed roof and parking surfaces. The stream was completed in the summer of 2022 and juvenile salmon and trout have already migrated into its full 250 m length. The project is the first Salmon Safe certified project on Vancouver Island.



SCOTT MURDOCH

MBCSLA

Scott Murdoch, MBCSLA is an RPBio and RLA and principal with MDI Landscape Architects. MDI focuses on integrating natural system design where soil, plants and water are integrated into urban designs to enhance stormwater quality, biodiversity, and urban forest canopy cover.

FRIDAY, MAY 12, 2023: 10:30 am to 11:00 am

PRESENTERS:

BEATRIZ MENDES,
SHASTA MCCOY,
CATHERINE BERRIS, URBAN SYSTEMS LTD.

INSPIRED GENERATIONS: 3 GENERATIONS OF LAs ILLUSTRATE WHAT INSPIRES THEM

Members of our landscape architecture practice from three generations will talk about what inspires us – our projects, clients, and teams – and where we find meaning. Projects include downtown revitalization, waterfronts, cemeteries, and the urban forest. Many of the clients are Indigenous communities and small towns. Colleagues are from a wider range of disciplines than we ever imagined.

- **BEATRIZ** – emerging professional superstar and a lively extrovert “always up for a lunch”, She is a BCSLA Intern
- **SHASTA** – established professional and a creative luminary “plant and rock nerd”. Shasta is a BCSLA Registered Landscape Architect
- **CATHERINE** – landscape mogul, getting masterful at delegation “writing fanatic”, Catherine is a BCSLA Registered Landscape Architect and a CSLA Fellow.

URBAN SYSTEMS LTD.

Urban Systems is an interdisciplinary firm of over 600, with a landscape practice of 25 people, and offices from BC to Winnipeg.



PRESENTER:
**STEPHANIE AITKEN AND
CHRISTOPHER SZYMBERSKI**

MAKING ADAPTIVE AND DIVERSE MEADOWS IN THE OKANAGAN VALLEY

Seed and Sparrow Design layers a number of different and complementary strategies and best practices that work together to create a Climate Resilient Landscape. Seed and Sparrow's presentation will highlight the design, construction, and initial establishment period of a semi-arid meadow project. They will share the challenges, risks, and rewards of implementing a process-driven landscape that is not well understood in the Canadian context — and even less so in the semi-arid climate of the Okanagan Valley.



SEED AND SPARROW DESIGN

Christopher Szymberski (BSc. Hort., MLArch, ISA Arborist) & Stephanie Aitken (B.A. & MLArch) co-own and operate Seed and Sparrow Design, a landscape design & consulting company that is pioneering climate resilient strategies for landscapes & gardens throughout the Okanagan Valley.

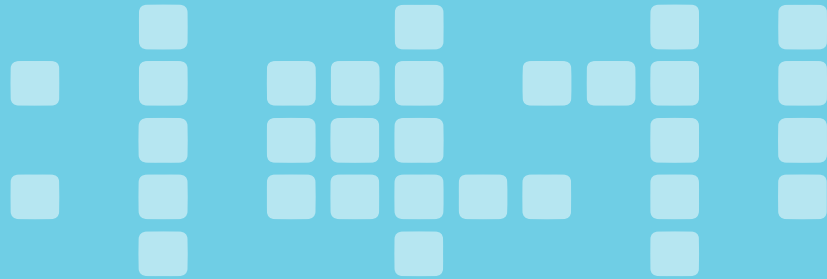
Through both scientific pragmatism and an artistic impetus to surprise and delight, Seed and Sparrow Design works with residential, municipal, and commercial clients to renovate or construct new landscapes that reduce inputs and resources, while increasing biodiversity & aesthetic interest.

PRESENTER: MARGOT LONG

WHAT WE LEARNED FROM OUR SEFC PROJECT 12 YEARS LATER. AND HOW THAT HAS CHANGED THE WAY WE LOOK AT PROJECTS

Over the years we have toured this project on a regular basis, checking on how it is fairing, what has worked and what hasn't. Not only PWL but others have completed post-occupancy studies, determined the bird population, how the habitat has improved, how the soil volume has affected the trees and tree canopy, and what the residents love most about the site. We have also monitored the heath island affect and change over time and how that has changed the way we look at other projects.

As a City Pilot project for the first Sustainable Neighbourhood, we have learned many things from South East False Creek (SEFC) that can be applied to other projects. I will discuss the strengths and weaknesses and what has resonated most for me personally and for our office practice.



MARGOT LONG

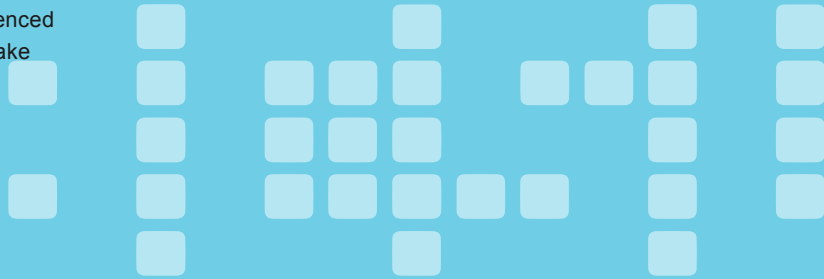
MBCSLA, FCSLA

Margot Long, MBCSLA, FCSLA, is one of the founding Partners of PWL Partnership. She has been practicing Landscape Architecture in private practice since 1980, when she graduated from the University of Oregon. She is now the senior partner along with 4 other partners and a number of associates who lead their team on a wide variety of projects ranging from waterfront parks, public realm, housing, neighbourhood and community planning to climate change and resilience design solutions.

PRESENTER: KEVIN JOHNSON

STUDYING THE FORGOTTEN TRIBUTARIES: RE-IMAGINING FLOOD CONTROL INFRASTRUCTURE AS PUBLIC SPACE IN LOS ANGELES

This presentation will focus on one such overlooked and forgotten piece of Los Angeles; our Tributaries. A vast system of underutilized and demoted infrastructure which hides in backyards and under freeways. Many miles of tributaries flow into the Los Angeles and San Gabriel Rivers across two massive watersheds which together span nearly the entire County. In an effort to mitigate flood risk, these once wild and natural tributaries were channelized and fenced off long ago. Paved over and forgotten. This presentation will take attendees along for the trials and tribulations as we reflect on our work as champions of the Tributaries; Looking at the past, present, and future of these important places.



KEVIN JOHNSON

Kevin Johnson is a Senior Associate with Studio-MLA in Los Angeles, California. Kevin's work is focused on the nexus of Urban Planning, Urban Design, and Landscape Architecture. Kevin is passionate about transportation systems and public spaces that integrate human connection, environmental resiliency, and social equity. He views landscape architecture as the connective element between infrastructure systems and the human experience and is committed to creating a responsible environment through the practice of landscape architecture and urban design. Kevin has over 12 years of experience working on large-scale, city-wide, multi-modal planning initiatives and projects. For the past 5 years, Kevin has been leading projects within LA County looking to re-imagine flood control infrastructure as public space. While Los Angeles is his home, Kevin loves to explore and spend time in beautiful British Columbia with his extended Canadian family.

FRIDAY, MAY12, 2023: 12:30 pm to 2:00 pm

BCSLA AWARDS LUNCHEON

The BCSLA Awards offer BCSLA Members and Associates with a unique opportunity to recognize and honour our “best citizens”. Enjoy a delicious buffet luncheon while recognizing this year’s honorees.

FRIDAY, MAY12, 2023: 2:00 pm to 2:30 pm

PRESENTERS: CHRIS PHILLIPS AND GREG SMALLENBERG

30 YEARS AND COUNTING

Using 4 PFS Studio city- building project examples, Chris Phillips and Greg Smallenberg will briefly explore and expand upon unique and distinct challenges facing each assignment that went far beyond the project design itself. They will also discuss more generally the role of landscape architecture in today’s constantly changing world and how innovative problem solving and adaptation has been essential in meeting these challenges.



CHRIS PHILLIPS

BCSLA, FCSLA, ASLA



GREG SMALLENBERG

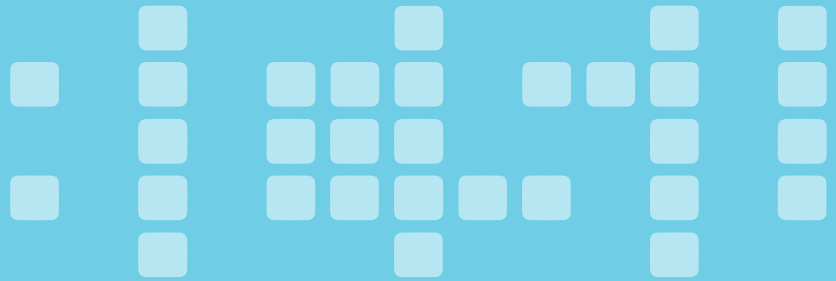
CM, BCSLA, FCSLA, FASLA

Chris Phillips BCSLA, FCSLA, ASLA and Greg Smallenberg, CM, BCSLA, FCSLA, FASLA are two of the founders of PFS Studio. They have been friends and business partners for over 30 years. In that time, and with equal efforts from the other PFS Studio leaders, they have created one of the most well-known and respected Planning, Urban Design and Landscape Architecture Firms in Canada.

PRESENTER: MARK VAN DER ZALM

HUB – DEVELOPING A SUSTAINABLE/WALKABLE/ MULTIPHASED TOD IN CITY CENTRE – SURREY

This presentation will focus on a multi-year/phase/billion-dollar investment in Surrey City Centre. This project includes a comprehensive redevelopment of the King George Skytrain station lands. It has been a stimulus for similar densification projects in Surrey City Centre and is a primary reason for re-investment in similar large-scale public/private partnerships in the emerging centre of Surrey.



MARK VAN DER ZALM

Mark van der Zalm, MBCSLA, is the founding principal of VDZ+A – a Landscape Architecture-led multidisciplinary practice with offices in Vancouver, Fort Langley, and Kelowna, BC. Through the course of numerous projects over two decades – Mark has seen the emergence of an exciting and vibrant centre for the Fraser Valley – in Surrey City Centre. Mark's team is currently working on many complex, multi-phases, and multi-tower projects in Surrey and is working with the planning department to create standards for stormwater management, sustainable materials and processes, as well as methods for best presenting the work to decision-makers. Making complex projects make sense from a number of perspectives so that planning staff and decision-makers can provide valuable feedback, critique and ultimately approval for appropriate projects.

Team members included in the presentation: Mark van der Zalm, Micole Wu, Phoenix Chan, David Jerke

FRIDAY, MAY 12, 2023: 3:00 pm to 3:30 pm

PRESENTERS: CONNOR REDMAN AND CHERIE XIAO

RAIN CITY STRATEGY IN ACTION: WOODLAND AND 2ND BIOSWALE

The Rain City Strategy, adopted by City of Vancouver Council in 2019, is an ambitious City-wide policy aimed at implementing green rainwater infrastructure as a nature-based solution to capture and/ or clean 90% of Vancouver's average annual rainfall volume as a long-term goal, and managing 40% of rainwater runoff by 2050 as an initial target. This presentation will look at a specific case study, a recently completed bioswale within the public right-of-way. Presenters will share considerations that went into planning, design, challenges in construction, and lessons learned in hopes to share knowledge with other designers, contractors, and municipalities on the challenges and opportunities in constructing green rainwater infrastructure. The presentation will also discuss how similar design can be replicated for city wide implementation.



CONNOR REDMAN

Connor is a BCSLA Intern working in both public and private realm within the lower mainland for the last 5 years. For the past three years, Connor has had a role in both green infrastructure design and construction coordination for a number of City lead projects including Richards Green Complete Street, an 8-block rainwater tree trench using both structural soil and soil cells, and Woodland & 2nd Bioswale, helping in all project phases from concept design to construction implementation. Most recently, Connor is working on helping to design and implement a number of public plaza and place making projects within the public realm of Vancouver.



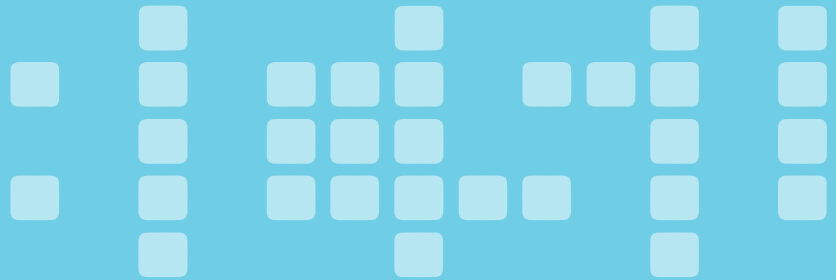
CHERIE XIAO

Cherie is a registered Landscape Architect and Senior Project Manager with over 18 years of experience managing all phases of integrated green infrastructure planning, design, and implementation at the City of Vancouver. She has developed a diverse portfolio of highly complex and urban public open space projects throughout Canada, US, and China. Her recent projects include Richards Green Complete Street, the first large-scale blue-green system in the city, Woodland & 2nd Bioswale integrating active transportation with community place-making, and St George Rainway, a green infrastructure practice with a long-term vision to construct a rainway along St. George Street Between 5th Avenue and Kingsway.

PRESENTER: JACK TUPPER

VANCOUVER MEADOWS — ALTERNATIVE MANAGEMENT OF URBAN PARKS

As our cities experience significant densification and environmental extremes, our urban green infrastructure will increasingly play an important role in our resilience to climate change. How we manage this green infrastructure and adapt our colonial methodologies is crucial to the future health of our cities. Since 2015, the Vancouver Park Board has experimented and studied various meadow managements to diversify our city's park landscapes, in an effort to boost ecological health and resilience. This research has rolled out over 40ha of naturalized meadows across the city to date, and analyzed every aspect of them from species diversity & abundance, to microbial communities and carbon sequestration. Showcasing the data and experience of our staff to date, this presentation looks to discuss the forecasted growth of the meadow's future, from an economic, ecological and aesthetic standpoint. How can we continue to adapt and alter our land management strategies to bolster the region's ecological health whilst balancing public values and intense use?



JACK TUPPER

MBCSLA

Jack Tupper, MBCSLA, is a Landscape Architect with the Vancouver Board of Parks and Recreation. He has a background in residential development, park master plans and neighbourhood design. Jack's work focuses on sustainable and ecological interventions within the urban realm.

FRIDAY, MAY 12, 2023: 4:30 pm to 5:00 pm

PRESENTER: **TAMARA BONNEMAISON**

WALKING THE TALK: THE CHALLENGES OF ACTUALLY DESIGNING ECOLOGICALLY FUNCTIONING LANDSCAPES

It's a lot easier to aspire to ecological design than it is to actually realize it. Landscape architects are adept at representing their work in 'green' language and imagery, but it can be difficult to build out a project with the full ecological attributes that LA's often boast about. This is especially true when municipal policies, engineering standards or even biologist reports don't support maintaining the ecologic function of a site. MDI Landscape Architects designed a landscape for the Cowichan District Hospital Replacement Project that works within the existing natural hydrology and ecology of the site. In order to achieve this, the project team had to overcome many design and permitting hurdles in order to 'do the right thing'. This included questioning

existing reports and assumptions, and convincing the wider design-build team that it was worth making the effort to respect and value the wetlands and natural areas found on the site. This approach helped our team to be selected as the preferred proponent for this landmark project, and also reduced the amount of offsite compensation that our team needs to provide. As we move through the detailed design and construction phase of the project, MDI continues to advocate for good ecological design through active collaboration with the design and construction team. By doing this, we hope that the design vision for this project — to restore the land so that it can be restorative to the patients and staff of the future hospital — can become reality.



TAMARA BONNEMAISON
MBCSLA

Tamara is passionate about creating spaces that engage people with their community and with the natural world. To explore these interests, Tamara obtained a Masters of Landscape Architecture and a Bachelor of Environmental Design from UBC, as well as a Restoration of Natural Systems Diploma from UVic. She has a decade of experience in leading ecological restoration projects, specializing in grassland restoration and community-led initiatives. At MDI, Tamara uses her communication, hand drawing and technical skills to generate beautiful, practical and sustainable landscape designs.

FRIDAY, MAY 12, 2023: 5:00 pm to 6:30 pm

CONFERENCE WELCOME RECEPTION

This is the best chance to socialize on the first night of the conference. Senior practitioners, emerging professionals, presenters, supporters and exhibitors will get to know each other and swap business cards. Listen to the experts engage each other in a dialogue about the aspects that were talked about in the day's session.

DAY 3 SATURDAY, MAY 13TH, 2023: 9:00 am - 9:30 am

KEYNOTE: ELI ENNS

RECONCILING PEOPLE AND PLACES: LANDSCAPE ARCHITECTURE AND IPCAS (INDIGENOUS PROTECTED AND CONSERVED AREAS)

Eli Enns is an internationally recognized expert in Indigenous-led conservation. From Tla-o-qui-aht Nation on his father's side, and of Dutch Mennonite heritage on his mother's side, Eli promotes holistic solutions for community and ecosystem health and well-being. With a background in political science, Eli is a 'Nation-builder' with values and approaches rooted in Indigenous economic theory and practice.



ELI ENNS

Eli is President and Chair for the Canadian Committee for IUCN is an internationally recognized expert in Indigenous-led conservation. Eli supports Indigenous Nations across Canada to advance their conservation efforts through his role as President and CEO of the IISAAK OLAM Foundation which is a host partner of the Conservation through Reconciliation Partnership."

SATURDAY, MAY 13, 9:30 am to 10:30 am

PANEL DISCUSSION IMPLEMENTING JUSTICE EQUITY DIVERSITY AND INCLUSION (JEDI)

JEREMY PLOTKIN, SARA BARRON, MICKELLA SJOQUIST, ELI ENNS AND
PATRICK MOONEY (MODERATOR)

PRESENTERS: CEASE WYSS, JAMES HARRY, CHELSEY SCHMIDTKE

INDIGENOUS DESIGN AND CULTURAL INTEGRATION IN PROJECTS IN THE LOWER MAINLAND

Cease Wyss and James Harry, two professional Indigenous artists practicing planting design, community integration and public art discuss the process of working with public and private projects, and how processes can be improved to better integrate Indigenous design, processes, cultural practices, and understandings.



DR T'UY'T'TANAT-CEASE WYSS,

Skwxwú7mesh/Sto:Lo/ Hawaiian/Swiss, is an interdisciplinary artist who works with digital media, writing, performance and land based remediations as her multi-disciplinary arts practice. She is a community engaged and public artist, Indigi-Futurisms developer/artist, land based artist and ethnobotanist/ permaculture designer. Her works range over 30+ years and have always focussed on sustainability, permaculture techniques, Coast Salish Cultural elements and have included themes of ethnobotany, indigenous language revival, Salish weaving and digital media technology. In 2022 Cease was awarded an honorary PhD from ECUAD and was also awarded the MST [Musqueam/Skwxwú7mesh/ Tseilwatuth: aka Skwxwú7mesh, xʷməθkʷəy̓əm, and səllwətaʔ Lands & Waters Skwxwú7mesh Uximiḡw] AiR fieldhouse in Stanley Park for the next 3 years. She will be infusing all elements of her diverse practice into this time spent reconnecting to her ancestors whose spirits remain a part of this forest and shoreline.



JAMES HARRY, *Skwxwú7mesh,* is recognized as one of Canada's most innovative and talented young artists, known for pushing the boundaries of traditional Coast Salish art while using his work to promote cultural understanding and reconciliation. His unique style blends intricate carving with bold, modern designs and incorporates elements like metal, light, and Salish design. James also collaborates with other artists to create new works that explore themes of identity and wholeness while reflecting First Nations stories. Overall, James Harry's art is a powerful expression of his cultural heritage and a testament to the ongoing vitality and relevance of Indigenous art forms.



CHELSEY SCHMIDTKE (MODERATOR),

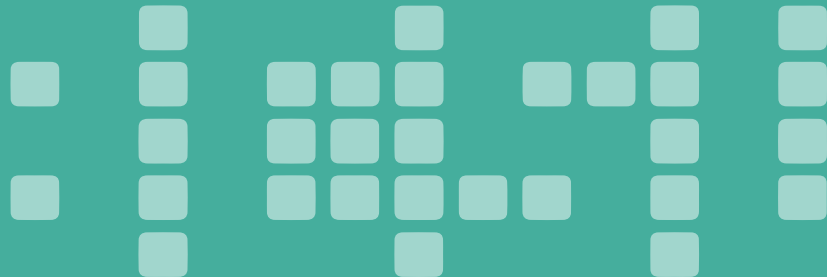
Mikwan (Cree-Métis, German), is a designer and planner. Her practice works to uplift stories, experiences and knowledge of Indigenous peoples as means of creating inclusive solutions and space for learning and moving forward in a good way. Chelsey's working with Cease, Voor Urban Labs, and the City of Vancouver Green Infrastructure Team to explore methods of decolonizing approaches to Green Infrastructure. She's working with James, Voor and the North Vancouver Library to explore ways the Library can better serve and make spaces safe for Indigenous community members as well as better reflect Coast Salish history and presence. Chelsey also works to support the National Urban Indigenous Coalition Council (NUICC), in uplifting the voices and rights of Indigenous peoples in population centres.

SATURDAY, MAY 13, 2023: 12:00 pm to 1:30 pm

PRESENTER:
KEES LOKMAN

BCSLA LUNCHEON AND LEARNING OPPORTUNITY VALUES-BASED APPROACHES TO NATURE-BASED COASTAL ADAPTATION SOLUTIONS

Adaptation inherently concerns making adjustments to policy, regulations and design practices in order to influence outcomes that alleviate harm and negative impacts of climate change. What constitutes harm or impact, however, and how these can be managed, highly depends upon how the perspectives within these implications are framed and understood, as well as the broader socio-political and environmental context in which these impacts take place. Values, knowledge, and experiences of affected people, groups and communities thus become an important marker for successful coastal adaptation, including nature-based solutions (NBS). As such, what is considered appropriate, effective and successful adaptation, is very much determined by what people, groups, sectors and decision-makers deem worthy of protecting and/or enhancing. Within this context, this presentation provides an overview of a number of different values-based approaches to inform NBS along the South Coast of British Columbia.



KEES LOKMAN
BCSLA

Kees Lokman, BCSLA, is an Associate Professor and Chair of Landscape Architecture at the UBC School of Architecture and Landscape Architecture. He chairs the landscape architecture program and also serves as the UBC representative on the BCSLA Board of Directors. Kees directs the UBC Coastal Adaptation Lab, which aims to foreground community values in the development of novel planning, design, and policy solutions for coastal adaptation. Kees is currently leading Living with Water, a transdisciplinary research project funded by the Pacific Institute for Climate Solutions. Living with Water brings together researchers, staff from the Skwxwú7mesh (Squamish) First Nation, Səlilwətaʔ (Tsleil-Waututh) First Nation, as well as managers from municipal and provincial governments. Together, they explore opportunities for fair and integrated solutions to coastal flooding that support coastal livelihoods and regenerate habitats for culturally significant species.

SATURDAY, MAY 13, 2023:

1:45 pm to 2:00 pm

CLIVE JUSTICE BOOK AWARDS TO NEWLY QUALIFIED LANDSCAPE ARCHITECTS IN 2022

Meet the BCSLA Members and Registrants who became licensed in 2022.

Al Neufeld, Registrar, will have the honour of introducing newly qualified landscape architects. The late Clive Justice, LMBCSLA #003, FCSLA, initiated this program many years ago by presenting a book to each new member at his own expense. BCSLA is proud to continue the tradition in his name.



2:00 pm to 2:30 pm

2023 BCSLA ANNUAL GENERAL MEETING REGISTRATION AND SIGN IN

For complete registration details visit: <https://tinyurl.com/3776982n>.

2:30 pm to 4:00 pm

2023 BCSLA ANNUAL GENERAL MEETING

The 2023 AGM will serve to review: directors and committee reports 2022 financial statements, to appoint auditors/accountants for 2023, to elect directors and officers to hold office until the conclusion of the next Annual General Meeting and other business, as required.

4:00 pm to 5:00 pm

BCSLA HAPPY HOUR

This informal happy hour will serve to wrap up our annual conference. Delegates will have the chance to catch up and discuss conference presentations, meet the new Board of Directors, speak with the presenters and relax while enjoying a light snack and a beverage.



 British Columbia Society of
LANDSCAPE ARCHITECTS

450, 355 BURNARD STREET, VANCOUVER, BC V6C 2G8

(604) 682-5610 | (855) 682-5610

WWW.BCSLA.ORG