

Landscape Architect Registration Examination Preparatory Courses



Sarah Gronquist
Landscape Architect

825 Delaware Street
Berkeley, CA 94702

Grading, Drainage & Construction Documentation

Section 4

Berkeley, CA: June 28-30, 2019

Project & Construction Management Inventory and Analysis

Sections 1 and 2

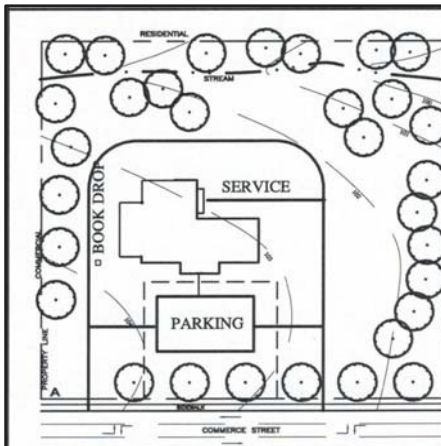
Berkeley, CA: July 20-21, 2019

With Ray Freeman's retirement, Sarah Gronquist will be continuing to offer his popular series of LARE Preparatory Courses for candidates taking the Landscape Architect Registration Examination. Ray's classes have attracted students from 46 states, five Canadian provinces, Puerto Rico, and The District of Columbia.

All classes are current with the 2017 exam format, and have been updated every **four** months.

Sarah Gronquist has taught exam preparation and university level courses at UC Berkeley and Merritt College for 15 years, including grading and drainage, construction detailing, planting design, business practices, and professional practice. She began her educational career with Ray Freeman as a co-teacher for these LARE preparatory courses in 2005 and is continuing to teach and develop them in collaboration with Ray. We are delighted to be able to continue to offer this useful series of courses.

Website: <https://www.sarahgronquist.com>



Section 1: Project & Construction Management

Section 2: Inventory & Analysis

Landscape Architects Registration Examination

Through lecture, group discussion, and practice tests, this intensive two-day course focuses on preparing students to take the LARE, concentrating on sections 1 and 2 of the exam as well as providing a detailed overview of the exam structure.

The course includes an in-depth overview of the exam and exam specific test taking tips. We also cover fundamentals of the impact of a wide variety of typical issues and challenges which affect design and construction processes, as well as regulatory and professional practice impacts on Landscape Architecture. Each student will receive a course binder containing approximately 310 pages of information pertinent to the exam, and 285 practice questions, focusing on sections 1 and 2. These materials have been reorganized for the new (2017) exam format.

The program includes

- Overview of the LARE; Structure of the exam
- How the exam is scored; Exam preparation strategies and tips
- Project Management
- Scoping, Budgeting and Scheduling
- Programming
- Contracts
- Base Map Development
- Project Coordination
- Bidding and Construction
- Construction Administration
- Change Orders
- Submittals
- Inspections & Construction Documentation
- Site Inventory
- Codes, Regulations & Permitting
- Onsite Investigations
- Information Gathering and Assessment
- Analysis of Existing Conditions
- Social and Cultural Factors Analysis
- Environmental and Physical Analysis
- Interpretation of Stakeholder Input

“I can happily say that I passed each of the sections after taking your prep courses and then last spring I took the CA supplemental exam and passed that as well! I am licensed!! Thanks for making your courses and knowledge available to us!”
Julia Storek Oberhoff, Los Osos, CA Spr 2013 & Fall 2013

Students will be given a grounding in the format, goals and requirements of the LARE. Lectures on a variety of topics tested by the exam and encountered in professional practice will be given over both days. An extensive list of typical questions specific to sections 1 and 2 of the exam will be given out and used as mock timed exams. The questions and answers will be then be reviewed as a group exercise led by the instructor.

Exam Overview and Sections 1 & 2

Who Should Attend

This course would benefit candidates for the LARE who are taking the exam for the first time or are having difficulty with sections 1 or 2. Additionally, individuals who would like to further their knowledge of technical and administrative aspects of the topics covered by these sections of the exam could benefit.

Date, Time and Location

Saturday-Sunday. **July 20-21, 2019.** 8:30 am-6:00 pm.
Location: LaQuinta Inn and Suites, 920 University Ave., Berkeley, CA, 94702.
A map and directions will be furnished upon enrollment.

Each participant will need to bring the following supplies

- Engineers scale
- Pencils or leadholders and erasers
- Highlighter
- Calculator with square root capability
- Notepad

“I would recommend you take Ray Freeman’s two day class in the Bay Area (Sections 1&2)of all the review courses I took, his was the most thorough...and it was after that class that I finally passed my last section..B/2 last Sept. (2012) There was info there that I hadn't seen elsewhere, and I do believe it was the determining factor for passing section 2.” Agave, JUN 2013

“Now that I've taken all 4 sections, I'd simply like to tell you that your courses are put together very well and a must for test takers. They've led to my success through three exams and great confidence going into the 4th. Your course cleanly compartmentalized the vast information included in Section 4 and I gained a great deal of professional understanding, regardless of tested result. I also greatly appreciate your teaching style and making the courses enjoyable over the intense weekend format. “ Jayson Wood , Sausalito, CA, JUN 2013

Section 4 Bootcamp: Grading, Drainage & Construction Documentation Landscape Architects Registration Examination

Through lecture, group discussion, and practice exercises, this intensive three-day course focuses on preparing students to take Section 4 of the Landscape Architects Registration Examination. This course includes a look at what material is typically covered on the exam and strategy tips on the new advanced item types. The course will include a short refresher on the fundamentals of grading and drainage. We will focus on building and reinforcing skills essential to successfully completing section 4 of the LARE. Each student will receive a syllabus and separate problem packages containing over 515 pages of information pertinent to Section 4, a minimum of 210 test questions and 42 Advanced Item Type problems. Lectures, practice tests, practice exercises, question and answer sessions are part of the class.

Material has been reorganized for the 2017 format.

The program includes

Overview of the Exam including question formats
Exam Preparation Techniques
Practical Techniques for Solving the new Advanced Type Problems
Grading Principles
Foundation Systems and Setting Finish Floors
Interpretation of Soil Maps and Reports
Watershed Planning
Accessibility Requirements
Roadway Grading
Vision Cone Problem Solving
Effects of Urbanization on Watersheds
Storm Drainage and Stormwater Management Principles & Devices
Elements, Functions and Design of Storm Water Ponds and Dams
Construction Documents
Specifications
Sedimentation and Erosion Control
Basic Stormwater Computations
Selection of Construction Materials
Construction Detailing
Landscape Maintenance
Irrigation Systems and Septic Systems

“I’m stoked to find out today I passed sections 3 & 4 of the LARE. Thanks for all your help, I’m thinking about coming for the sections 1 & 2 review your having. Is there still room?” Robert Richards, Santa Barbara, CA, OCT 2012

Instructor

Sarah Gronquist is an Associate Principal at PlaceWorks and has more than 20 years of experience as a Landscape Architect. Her specialty areas include site planning, layout and grading plans, professional practice, planting design, and construction detailing. Ms. Gronquist began teaching LARE review courses with Ray Freeman in 2006 and continued through 2010. She went on to teach construction details with Ray in 2014 and 2015 at the Landscape Architecture program at the University of California at Berkeley and to join his grading and drainage classes as an occasional guest lecturer. She has also developed and taught numerous courses around the Bay Area, including Professional Practice for UC Extension, Site Engineering for Landscape Architects at the Academy of Art University in San Francisco, and Grading and Drainage, Planting Design and Business Practices for Merritt College in Oakland, CA.

Dates, Times and Locations

Friday -Saturday-Sunday, **June 28-30, 2019.** 8:30 am-6:30 pm.

Location: La Quinta Inn and Suites, 920 University Ave., Berkeley, CA, 94702.
A map and directions will be furnished upon enrollment.

Each Participant will need to bring the following supplies

- Engineers scale
- Small 45 & 30/60 triangles (optional)
- Drafting tape
- Pencils or leadholders and erasers
- Highlighter
- Calculator with square root capability
- 12-inch roll of tracing paper
- Notepad

“I just wanted to let you know that I took and passed the CSE yesterday! (May 2013) Please keep me on your mailing list for LARE sessions, I am active in ASLA and will keep mentioning your courses to candidates interested in becoming licensed.” Dalton LaVoie, Sacramento, CA, FEB 2012

Just got the news I passed 4. I couldn't have done it without your bootcamp! I went 4 for 4. I couldn't have done that without your expert teaching, no-nonsense coaching and comprehensive materials. I really appreciate you taking the time to help us all through the LARE process. Are you sure you don't want to do a class on the California exam?” Steve Rasmussen Cancian, Los Angeles, CA, FEB 2014

“I just found out I passed Section 4 on my first attempt. Thanks for all your help! I'm done with all the LARE now. Your courses truly are the best out there and I would recommend it (the Section 4 class) to anyone.” Ritti Suvilai, Surrey, BC, JUN 2016

For More Information

For specific information or questions, **email: sarah@sarahgronquist.com**
(*this is the preferred method for contact*)

Phone (510) 495-5369.

Please leave an e-mail address for replies.

Registration Deadlines

Enroll early! Class size is limited to a firm maximum of **30** in each session. The following deadlines have been set for registration:

June 28-30 Class:	June 24, 2019 6:00 pm
July 20-21 Class:	July 16, 2019 6:00 pm

It will not be possible to sign up for any class after 6 pm on the deadline dates.

Cancellation & Refund Policy

Classes may be cancelled or rescheduled due to circumstances beyond our control. In the event a class is cancelled, a full refund will be made for that class.

If your plans change and you will not be able to attend a class for which you have registered, a refund will be given if the cancellation notice is received by the relevant registration deadlines given above.

Cancellations after the registration deadlines will not be refunded.

About the Berkeley location

La Quinta Inn and Suites is located on University Avenue, just a few blocks from I-80. It is a five minute walk from Aquatic Park and less than 5 blocks from the 4th street commercial district. Overnight accommodations include an outdoor pool, fitness room, business center (one seat), and complimentary continental breakfast. The rooms have free wi-fi. Off street parking is free to all attendees. Ask for LARE rate which entitles you to a 15% discount. To get this rate you must reserve room more than 2 weeks ahead. The facility is 12 blocks (15-20 min walk) from the North Berkeley BART Station and less than 4 blocks from the Berkeley Amtrak Station. BART connections from SFO and Oakland airports are good. There are 30 restaurants within a 10 minute walk of the facility.

1. Fees

Course fees are as follows: (Note: Eventbrite Fees are not included (\$17-20 per class))

Sections 1&2: \$350 (2 days)

Section 3: \$425 (3 days)

Section 4: \$450 (3 days)

Complimentary soft drinks, coffee, tea, and water are provided as part of the course. Light snacks are provided at breaks.

Caltrans has recognized these courses as being eligible for reimbursement as an education/professional development expense.

In order to keep administrative costs down, we are unable to provide advanced documentation to governmental agencies in order for them to cut payment checks directly to us. Please apply for reimbursement after the course. I will be happy to provide certificates of completion upon your request. Acknowledgement of payment and receipts are sent to all registered parties through Eventbrite.

2. Registration

You must register through the **Eventbrite** website for these classes.

Payment may be made via credit card through the Eventbrite site.

We will not longer be accepting paper applications and checks for registration and payment. Eventbrite fees are not included in the course prices, and run \$17 to \$20 per class. Eventbrite will automatically tack these fees onto the ticket price at time of registration.

Please register via the links/URLs below: _____

Section 4 (Grading, Drainage & Construction Documents) Bootcamp

<https://www.eventbrite.com/e/lare-preparatory-course-section-4-grading-drainage-and-construction-documentation-tickets-62280371267>

Sections 1 & 2 (Project and Construction Management, Inventory and Analysis)

<https://www.eventbrite.com/e/lare-preparatory-course-sections-1-and-2-proj-mgmt-inventory-analysis-tickets-62296402216>