

SITELINES

Bimonthly Publication of The British Columbia Society of Landscape Architects



Shifting Ground

Invitation • Speakers • Saturday • Shifting Gears
UBC • Habitat • Charette • Publishing • Sponsors • Schedule

April 2006

Introducing ...
**THE FRAMERS
 MODERN™
 SERIES**

Visit our booth at the 2006 CSLA/CELA tradeshow.

Held June 14th through June 17th, 2006
 Hyatt Regency Vancouver

Gently sloped seat and back sections for comfort

Ductile iron castings with our 10-year warranty



FB-324 Fullback bench with all wood seating (patents pending)

Curved armrests continue to the front of the bench for ease of use

Slim curved legs, graceful arms and clean lines create contemporary styling with trademark Victor Stanley durability and comfort. The FB-324 bench is available with wood or recycled plastic slats. All other benches feature tubular steel which frames the modular seat surface (available in wood, recycled plastic, horizontal steel rods or horizontal stool slats). The combination of elegance, strength and comfort is what makes Victor Stanley, Inc. the first choice of landscape architects and public space designers around the world.

Incredibly graceful!



FMBF-324 with horizontal steel slats (patents pending)

Manufactured by:

VS VICTOR STANLEY, INC.
Manufacturers of Quality Site Furnishings since 1962-
www.victorstanley.com

Exclusive British Columbia Sales Representative:

habitat
 systems incorporated

BC Office
www.habitat-systems.com
 E-mail: info@habitat-systems.com
 Toll Free: 1 (866) HABITAT (422-4828)
 Ph: (604) 294-4224



**BRITISH COLUMBIA SOCIETY
OF LANDSCAPE ARCHITECTS**

110 - 355 Burrard Street
Vancouver, BC V6C 2G8
Tel: 604.682.5610
Fax: 604.681.3394
Email: admin@bcsla.org
Website: www.bcsla.org

President	Pawel Gradowski	604.684.4611
President Elect	David Thompson	604.922.3217
Past President	Mark Vaughan	604.922.1885
Registrar	Patrick Harrison	250.754.5857
Treasurer	Kate Davis-Johnson	604.257.8471
Directors	Tom Barratt	604.932.3040
	Joe Daly	250.361.0368
	Grace Fan	604.983.7394
	Dave Hutch	604.904.9803
	David Rose	604.904.9803
	Chris Sterry	604.688.6111
CSLA BoG Rep.	Liane McKenna	604.257.8691
UBC Liaison (non-voting).	Cynthia Girling	604.822.0438
Intern Rep. & (non-voting).	TBD	
Student Rep. (non-voting).	Jamie Vala	604.732.3266
Exec. Admin. (non-voting).	Tara Culham	604.682.5610

Sitelines is published six times per year; February, April, June, August, October, and December by the British Columbia Society of Landscape Architects and is mailed to all BCSLA members, registered landscape architects, associates and affiliates. The editorial deadline is the 8th and advertising is the 16th day of the intervening months. Advertising rate information is available on request. Inquiries regarding editorial, advertising, or other issues should be addressed to the *Sitelines* Editor, c/o the BCSLA at the above address.

Sitelines Group

Editors	Laura-Jean Kelly	604.730.4867
	Cameron Murray	604.730.8256
Guest Editor	Adrienne Brown	604.688.6111
Advertising	Tara Culham	604.682.5610
Editor	fax	604.681.3394
Printing	The Printing House	604.662.7772

The purpose of *Sitelines* is to provide an open forum for the exchange of ideas and information pertaining to the profession of Landscape Architecture. Individual opinions expressed are those of the writers and not necessarily of those of the BCSLA.

An Invitation to the CSLA Conference

BY ADRIENNE BROWN



Adrienne Brown MBCSLA,
drawing by C Murray

Shifting Ground is one of a number of professional conferences that will take place ahead of the United Nations World Urban Forum. This conference is groundbreaking in that it is the first time that professional organizations and the international academic community have joined forces to stage a shared event. As such, the 2006 CSLA/CELA conference will provide a unique opportunity for the groups to share their experiences, and discuss solutions to some of the many challenges associated with urbanization.

Shifting Ground will feature speakers that include Larry Beasley, Leonie Sandercock, Gordon Price, Trevor Boddy, and Patrick Condon who will speak about a wide range of city-building issues as they relate to urbanizing regions around the world. There will also be accomplished designers such as Julie Bargmann, Tom Leader, Ron Williams and Vincent Asselin who are using their ingenuity to come up with solutions to physical and cultural change Internationally. Then there will be speakers such as Marc Imhoff of NASA, who will talk about the really big picture with a discussion of urbanization as seen from space. In all, *Shifting Ground* will offer five keynote addresses and eight speakers, in addition to 150 paper presentations over three days. Presenters will discuss urban landscapes from New Zealand to the Czech Republic and from New Orleans to Belize.

The Hyatt Regency Hotel is located in the heart of downtown Vancouver, within walking distance of Stanley Park, Harbour Green Park, Coal Harbour Neighbourhood, and the site of the new Vancouver Convention Centre, currently under construction.

Organizers have planned this conference to provide unparalleled value. The cost of full registration at the Early Bird rate is a remarkable bargain at \$400.00, when you consider not only the extensive program; but also the meals and social events included in the package. Whether you are travelling from Europe or just coming downtown for the day, your visit will be jam packed with opportunities to hear about new theories, tour the trade show, and make new friends.

continued on page 8

IN THIS ISSUE:

An Invitation to the CSLA Conference	3
Keynotes	5
Speakers	6
Super Saturday	8
Shifting Gears at Shifting Ground	10
Student Exhibition	12
Regional Design Charette	12
From PreHabitat to PostHabitat	14
Workshop on Publishing	14
Sponsors	15
Schedule	16

An Invitation to the CSLA Conference

- continued from page 1

Finally, the United Nations World Urban Forum will provide a focus for the professional conferences, and the talent and energy gathering in Vancouver to consider challenges associated with the rapid pace of urbanization around the world. The BCSLA, and the Landscape Architecture Program at the UBC invite you to Shifting Ground. Come and join us in Vancouver and see for yourself how design professionals can offer a diverse collection of ideas to contribute to the United Nations World Urban Forum / Habitat +30.

The BCSLA is organizing the conference on behalf of the Canadian Society of Landscape Architects and is working closely with the CSLA Executive to arrange key events, such as the Induction of Fellows, Awards lunch, and roundtable discussions.

The Council of Educators in Landscape

Architecture represents the interests of academic programs in Landscape Architecture including ninety landscape architecture programs in Canada, New Zealand, Australia, USA and other countries. CELA was founded in 1920 and for more than seventy years members have worked to uphold and develop standards of professional education in landscape architecture. CELA publishes research papers in the Landscape Journal and the electronic journal, DesignNet.

The University of British Columbia Landscape Architecture Program was founded in 1979, and is a member of CELA. Since the summer of 2005, the Program has been a part of the

School of Architecture and Landscape Architecture at UBC, where it currently offers graduate degrees to both local and international students. Students and faculty both are contributing to the organization of Shifting Ground.

SmartGrowthBC

Innovations in Smart Growth Housing

2006 Annual Conference

Friday May 5th - 8:30 - 5:00pm - Westin Bayshore - Vancouver BC

Morning Presentations:

- BedZED - the UK's Zero Net Energy Development
- Market Forecast for Housing in BC
- Overcoming NIMBYism

Afternoon Technical Sessions:

- Retrofitting Neighbourhoods
- Green Buildings for Housing
- Affordability & Housing Choice

Registration:

Full Day: \$275 +GST
 Lunch Only: \$55 +GST
www.smartgrowth.bc.ca
 604-915-5234

Tickets include a gala luncheon where our 1st Smart Growth Award Winners will be announced

Thank-you to our major sponsors

Vancity

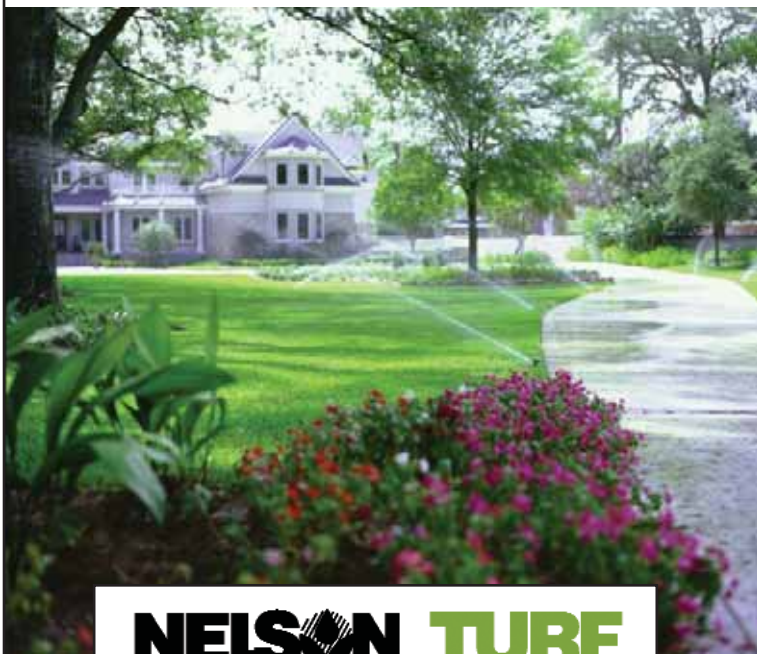
Ministry of Community Services

Ministry of Finance

Ministry of the Environment

ANDREW SHERET LIMITED

Since 1892



NELSON TURF

Quality. Service. Guaranteed!

PLUMBING • HEATING • AIR CONDITIONING • FIRE PLACES • IRRIGATION • WATERWORKS • INDUSTRIAL • WATER FILTRATION • PUMPS

Nelson • Bear Irrigation • Focus Landscape Lighting • Landscape Cloth • Drip Irrigation • Carson Valve Boxes • Landscape Rakes & Shovels • Irrigation Wire & Connectors • PVC Pipe & Fittings • NDS Drains • Flexible Drain Pipe • Drinking Fountains

Vancouver Island

Victoria
 Langford
 Nanaimo
 Courtenay
 Campbell River
 Parksville

Lower Mainland

Vancouver
 Burnaby
 Surrey
 Richmond
 Abbotsford
 Port Coquitlam

Interior/Okanagan

Kelowna
 Prince George
 Vernon
 Penticton
 Kamloops
 Castlegar

CONTACT:

Ashley Towers
 250.758.7383

CONTACT:

Barry Craig or
 Doug McDonald
 604.278.3766

CONTACT:

Mark Stephens
 250.493.9369

WWW.SHERET.COM

Andrew Sheret Limited has 19 locations in BC to serve you!

Keynotes:



Julie Bargmann is nationally recognized as an innovative designer of regenerative landscapes and an interdisciplinary design educator. At the University of Virginia, Bargmann's graduate design studios and seminars challenge restrictive policies and conventional remediation practices that plague Superfund sites and Brownfields. Her teaching and research support her role as primary faculty investigator at the University-wide Center of Expertise for Superfund Site Recycling. Bargmann built award-winning landscapes with Micheal VanValkenburgh Associates, and she was awarded the 2001 National Design Award for Environment by Smithsonian's Cooper-Hewitt Museum. Her ongoing design and research project, D.I.R.T. (Design Investigations Reclaiming Terrain), excavates the creative potential of disturbed sites such as quarries, coal mines, factories, and railyards, exploring industrial and urban processes in relationship to ecological systems, cultural constructs, and emerging technologies.



Larry Beasley, Co-Director of Planning and Director of Current Planning for the City of Vancouver, has initiated the land use and transportation plans that are dramatically reshaping Vancouver's inner city. An Adjunct Professor at the University of British Columbia, Beasley also chairs the National Advisory Committee on Planning, Design and Realty of Ottawa's National Capital Commission. He regularly advises municipalities across Canada and internationally. The United Nations has honoured his work as one of the "World's 100 best planning practices" and the Royal Architectural Institute of Canada conferred on him its 2003 Medal of Excellence as "Advocate for Architecture". Beasley was recently appointed a Member of the Order of Canada.



Mark Kingwell teaches Philosophy at the University of Toronto, specializing in political and cultural theory, justice and citizenship, and the philosophy of art and architecture. He is the recipient of numerous awards for his writing on political theory, his essay-writing, and his contributions to art theory and criticism. Mark writes on philosophy and cultural theory, as well such subjects as the photographic history of the twentieth century, and he contributes to many magazines both popular and academic, with his writing being translated into eight languages. He is currently writing a book that examines the relationship between cities and consciousness.



Tom Leader is the principal of Tom Leader Studio, a collaborative design office based in Berkeley, California. Leader's work is rooted in the methodology of Peter Walker & Associates, where he was a partner when the firm received two National Honour Awards from the ASLA for projects under his direction: Longacres Park in Seattle, and Asahikawa River Park on the island of Hokkaido, Japan. Leader's recent work includes Shanghai Carpet, the Shanghai Yang Pu University City Hub, the Santa Fe Railyard redevelopment, and the Arroyo Parkway in Pasadena, California. Leader will explore the device of "screening"—partly aesthetic impulse and partly analytic tool—and its emergence in his Studio's practice. Screening refers to the creation of a semi-transparent matrix that can register the drifts of sound, smell, water vapour, city growth and decay, and landscape dynamics.



Leonie Sandercock heads up teaching and research in planning theory and history at the School of Community and Regional Planning at the University of

British Columbia. Originally from Australia, she has also taught in the Graduate School of Architecture and Urban Planning at UCLA. Professor Sandercock has recently published her 10th book: *Cosmopolis 2: Mongrel Cities of the 21st Century*, for which she received the Davidoff Award from the American Collegiate Schools of Planning. In 2005 she also received the Dale Prize for Excellence in Urban and Regional Planning, awarded by the Department of Urban and Regional Planning at California State Polytechnic University. Sandercock loves the chaos and contradictions of cities, but worries about their 'sustainability', in the broadest sense. She will explore the question of how urban governance, policies, and design can reflect and accommodate cultural diversity through an "intercultural" philosophy.



John Ralston Saul, CC, PhD, is a Canadian essayist, novelist, and philosopher. His latest book is *The Collapse of Globalism and the Reinvention of the World* (2005). His writings are aimed at a new humanism through what he calls responsible individualism. His philosophical trilogy and its conclusion—*Voltaire's Bastards: The Dictatorship of Reason in the West*, *The Doubter's Companion: A Dictionary of Aggressive Common Sense*, *The Unconscious Civilization and On Equilibrium: Six Qualities of the New Humanism*—has impacted political thought in many countries. Co-Chair of the Institute for Canadian Citizenship, Founder and Honourary Chair of French for the Future, and Chair of the LaFontaine-Baldwin Symposium, Saul is a Companion in the Order of Canada and a Chevalier in the Ordre des Arts et des Lettres of France.

Invited Speakers



Vincent Asselin

is a graduate from the University of Montreal, and is a principal of WAA-Williams,

Asselin, Ackaoui et Associés inc., a well-established landscape architectural firm specializing in parks and public spaces, as well as research in historical preservation and environmental planning. He has received national recognition both in Canada and China for the design of both Yan'an Zhong Lu Park and Xujiahui Park in Shanghai. Mr. Asselin is Past President of the CSLA and the AAPQ (Association des Architectes Paysagistes du Quebec), and is currently the Vice-president of Landscape Architecture Canada Foundation (LACF). He is currently preparing a book on Landscape Architecture in Canada scheduled for publication in Beijing later this year.



Trevor Boddy

has taught design, urbanism, architectural history and theory at the University of British

Columbia, as well as in Oregon, Manitoba and Toronto, and he lectures globally on contemporary Canadian design. He has worked as a staff urban designer for planning departments in Calgary and Edmonton, and has consulted on urban spaces and historic preservation across Canada, the United States and Hong Kong in addition to serving as advisor and jury member for design competitions and architect selection processes in North and South America. Trevor Boddy lives in Vancouver, where he is working on a book on Canadian Architecture in the Twentieth Century, while also serving as architecture critic and civic columnist for The Vancouver Sun.



Patrick Condon holds the UBC James Taylor Chair of Landscape and Liveable Environments. He has published widely and

lectured at many North American universities. As an extension of his work with Moriarty-Condon Ltd., a Vancouver planning and landscape architecture firm specializing in sustainable design, Condon has developed a practical set of alternative development standards for sustainable communities. He will lead a one-day charrette as part of the "UBC Sustainability by Design" project, engaging 200 designers and planners to collaborate on a vision of what the separate cities and districts in a sustainable Greater Vancouver Regional District would look like. Both the product and the process will be shared with the world at the UN World Urban Forum and as part of the 2010 Sustainable Region legacy.



**JOHN PEACHEY
& ASSOCIATES**
INNOVATIVE SIGNAGE INC.

604-984-4395
www.innovativesignage.com



Mike Houck

directs the Urban Greenspaces Institute at the Center for Spatial Analysis and Research at

Portland State University where he is an adjunct instructor, and continues in his role as Urban Naturalist at Portland Audubon Society part-time. Dedicated to preserving green spaces and promoting urban parks and trails throughout Portland, Mr. Houck helped found the Urban Streams Council in 1993 and the Coalition for a Livable Future in 1994, and now speaks internationally on issues related to urban natural resources and sustainable development. He was awarded the Architecture Foundation of Oregon's 2005 Honored Citizen Award, and he serves on the national steering committee of the Ecological Cities Project, and the Portland Metro Greenspaces and Technical Advisory Committees.



Gordon Price is

the newly appointed Director of The City Program at Simon Fraser University, and is also

an Adjunct Professor in the School of Community and Regional Planning at the University of British Columbia. He has served as a Vancouver City Councillor, on the Board of the Greater Vancouver Regional District, and on the first board of the Greater Vancouver Transportation Authority (TransLink). Gordon Price is a regular lecturer on transportation and land use for the City of Portland, Oregon and Portland State University. He contributes to numerous journals, including those of the American and Canadian Planning Associations. In 2003, he received the Plan Canada Award for Article of the Year - "Land Use and Transportation: The View from '56"-from the Canadian Institute of Planners. He sits on the Boards of Northwest Environment Watch and the International Centre for Sustainable Cities.



Ron Williams is a

landscape architect and architect, and a professor at the École d'architecture de paysage of the

University of Montreal. As a founding partner of the Montreal landscape architecture and urban design firm of WAA (Williams, Asselin, Ackaoui and associates), he has contributed to many award-winning projects including the Montreal Beach Park on Ile Notre-Dame, the Biodôme de Montréal, and the Jardin de l'Espace Saint-Roch in Québec City. Ron Williams is a Fellow of the Canadian Society of Landscape Architects and of the Royal Architectural Institute of Canada, and is currently writing a book on the history of landscape architecture in Canada



Marc Imhoff

is a Principal Investigator in the National Aeronautics and Space Administration's

(NASA's) Carbon Cycle Science and Land Cover Land Use Change Programs at NASA's Goddard Space Flight Centre. He is also the Principal Investigator for the first civilian very high frequency (VHF) synthetic aperture radar (SAR) sensor for vegetation biomass and soil moisture measurement. As a specialist in the application of remote sensing and computer modelling to study changes in the biosphere and climate, Marc Imhoff studies the effects of urbanization on biodiversity, food security, and climate.

Term Life Insurance
Income Protection
Office Overhead Protection
Health & Dental Plans
Property Insurance
(Homeowners, Tenants, Condo Owners, etc.)

Exclusive to BCSLA Members
INSURANCE SOLUTIONS *for*
YOUR PEACE OF MIND

apartment
penthouse
the
living

30 years
MUMBY
Insurance Brokers Inc.
Member of Foreign Professional Society 1976

1-800-446-5745 | inquire@mumby.com | www.mumby.com

Super Saturday • June 17, 2006

The 2006 City Building Professionals Group is offering a unique day of inter-disciplinary sessions, networking opportunities and social activities. Delegates will have the opportunity to participate in either a choice of on-site activities that include presentations, roundtables, workshops or a design charrette, or off-site workshops and tours. The day will wind up with a Gala Reception, and a special keynote speaker: The Right Honourable Adrienne Clarkson, former Governor General of Canada.

The 2006 City Building Professionals Group is comprised of the

- B.C. Society of Landscape Architects
- Canadian Society of Landscape Architects,
- Planning Institute of B.C
- Canadian Institute of Planners
- Architectural Institute of BC
- Royal Architectural Institute of Canada

Super Saturday will be based at the Westin Bayshore Resort and Marina, in Downtown Vancouver. When you register for Shifting Ground, select either on-site or off-site activities, and come back to the conference website in May for details on how to register for specific activities. The following is a preliminary line-up of events::

On-Site Activities

Sustainability by Design

*UBC DESIGN CENTRE FOR SUSTAINABILITY
REGIONAL DESIGN CHARRETTE*

Join renowned sustainability expert Patrick Condon & the UBC Design Centre for Sustainability for a compelling day-long design charrette envisioning a sustainable plan & design for the greater Vancouver region for 2050 and beyond.

Planetary Secrets

*THE SECRET LIVES OF STORMS,
DESERTS & FIRES*

A dynamic visual presentation on sustainability & the view from space, featuring NASA's Dr. Marc Imhoff exploring human & natural forces interacting across the planet.

Designing Sustainability into the Future

100 YEAR PLANS FOR CITIES OF THE WORLD
Presentations by representatives from the International Centre for Sustainable Cities (ICSC) from Durban, Australia and Calgary, Alberta.

Heritage Conservation, Rehabilitation & Urban Revitalization Workshop

Leading experts brought together by the Province of B.C. Heritage Branch will lead participants through an insightful & comprehensive workshop on heritage & rehabilitation which will include visiting some local heritage sites.

Leading Multi-Disciplinary Planning & Design Teams - Soft Skills for Professionals

A workshop covering vital skills required in today's multidisciplinary environment, including: leadership, strategic planning, project management, team-building, communications & conflict resolution.

Public Participation in the Era of Smart Growth

*NEW APPROACHES TO SUSTAINABLE
COMMUNITY PARTNERSHIPS*

This lively panel discussion will unearth best practices and case studies in public participation that are being used as part of sustainable smart growth projects.

Healthy Communities by Design

This session explores the growing importance of health & the role of planning & design in helping to create healthier communities.

Global Studio I and Beyond

Presentation/workshop developing an interdisciplinary approach to the education & training of planners & designers in participatory design & planning - sustainable, people-centred urban development.

Green Technology Workshop

An innovative workshop on the design and application of green technologies.

Re-thinking the Shop House

This workshop will explore integration of mixed-use development - specifically the physical design & regulatory challenges to integrating 'dirty' workspaces into mixed-use & residential neighbourhoods.

Approaches to Urban Design from San Diego

A team of professional architects, landscape architects, & planners from San Diego share their experience in acting to influence & improve urban design in San Diego.

Urban Design Forum - Canadian Urbanism

A presentation, forum & exhibition on Canadian urban design presented by the National Urban Design Interest Group and Vancouver Urban Design Forum.

Sustainable Urbanization - Film & Video Program

Visit the screening room to enjoy a virtual mini-urban-film festival of films, videos and multi-media presentations on topics related to sustainable urbanization.

Off-Site Mobile Workshops & Tours

THE WEST END - 'THE MANHATTAN' TO MOLE HILL

A walking tour of Vancouver's vibrant, high-density West-End neighbourhood

Granville Island

A tour of Vancouver's dynamic festival market, cultural hub, and mixed-use working waterfront destination

Chinatown - Yesterday & Today

Learn about the history & distinctive architecture of this notable part of Vancouver

Vancouver Landmark Chase

A fun and "amazing urban race" of teams of delegates seeking clues & visiting key Vancouver landmarks

Livable Region Strategic Plan to the Sustainable Region Initiative

A tour and dialogue on the impact of sustainability in regional planning

Green With Envy - the Residential Green Market

A tour of residential green buildings.

Greenways with Wheels - The Successes & Challenges of Building a Regional Greenway System

A cycling tour of part of greater Vancouver's regional greenways

The Alternate Transportation Treasure Hunt

Explore interesting & undiscovered places in Vancouver using alternate modes of transport.

Vancouver's Waterfront Neighbourhoods

Explore "Vancouverism" in some of the city's unique waterfront neighbourhoods

Vancouver's Working Harbour

Tour of the largest port in Canada, the Port of Vancouver

Biting the Hand that Feeds You - Reconciling the Agricultural Land Reserve

Tour agricultural lands and talk directly to farmers

Eating it Up! Where Does Food Fit in Urban Design?

Explore roof top gardens, green roofs, farmer's markets, school gardens & more

Food Unfair: Why Does One Street Go Hungry While the Other Has Plenty?

Exploring food issues & Vancouver's Downtown Eastside

Grocery Wars - What does a Grocery Store Bring to a Neighbourhood?

A tour to show how to think differently about the role of grocery stores in Complete Communities

Sustainability from a First Nations Perspective

A tour of the UBC Museum of Anthropology

A Different View - Urban Land Use from a First Nations Perspective

A tour & kayaking trip highlighting the cultural & economic successes of First Nations

North Shore Culture

A mountain biking tour exploring the world famous North Shore mountain bike culture & related issues

The Eye on Public Art

A tour & team activity with digital cameras, exploring Vancouver's public art

Rethinking Heritage in the Urban Context

A heritage tour to Richmond exploring the Steveston village, Britannia Heritage shipyard & more

Sense of Vancouver - Vancouver Art Gallery

A public lecture & tour to the Vancouver Art Gallery focused on architecture & design

Vancouver's Green Street Scene

A tour of innovative green street projects aimed at managing storm water & calming traffic

Beneath the Surface of Vancouver's Green Jewel

A walking tour exploration of Vancouver's Stanley Park & its many hidden initiatives

Community Stewardship & City Park Planning - A Model for Urban Development

A tour of Vancouver's Everett Crowley Park

Arts, Culture, History & Nature on Deer Lake

A tour of Burnaby's Deer Lake park exploring the unique balance of its individual components

The Indelible Prints of History & Recreation on the Mountain

Exploring the history of disturbances on Vancouver's North Shore Mountains

Looking for Balance Where the City Meets the Mountain

A tour to Grouse Mountain explores conservation, recreation & water supply issues

CBGolding CHARTERED ACCOUNTANT

Call me at 604-909-1175
to discuss how we can help your
business grow and prosper.

**straight talk, sound advice...
for your growing business**

CB Golding Chartered Accountant
Suite 300, 1275 West 6th Avenue,
Vancouver, BC, V6H 1A6
604-909-1175



Charles B Golding CA CPA(WA) MBA

Shifting Gears at Shifting Ground – The Social Events

BY LILLI CLARK & TRACY PENNER

Pondering the role of the Landscape Architect in the age of the 'New Normal'? After attending thought provoking workshops on such important issues as terrorism, environmentalism, globalization, poverty and urban decay, you may be ready for some lively conversation, if not light diversion. Conference organizers have put some thought into this, and the result is a range of social events.

A highlight of any conference is often the opportunity to discuss new ideas with others in the field. And it is always pleasant to have an occasion to mingle among friends and colleagues in a convivial atmosphere. Shifting Ground will offer several opportunities to do just that. A prime example is The Street Market Social,

a gala event on Friday evening, which is shaping up to be the social highlight of the conference. Here is a sneak preview:

“As a delegate, you enter the spectacular curved atrium of the Vancouver Library and are instantly transported to an evening with a 'Colourful Street Market' theme. After a long day of conference events, you are relieved to see bartenders handing out cold, frothy, locally brewed beer and deliciously robust wines from different regions of British Columbia. You are enchanted by the scent of fresh cut lilies, peonies and blossoming quince that are scattered throughout in colourful bunches, enlivening the Market. Strolling along the brick promenade amongst various food and beverage stations you are enticed by the colors and smells wafting up, each table

bursting with a variety of organic veggies, marinated lamb or chicken and other delicacies ready for the tasting. Performers roam the market surprising everyone with tricks and talent, and you become captivated by the music that surrounds you. After reaching only a few of the many food stations that you will visit tonight you take a spot at a cocktail table to chat with friends and colleagues of old. The tables are decorated in an aged elegance with potted candles flickering away, lending an air of magic to the evening. An hour or two later amid the last sips of wine and the gentle fading of the band, you are sad to see such a night of lively sounds, delicious tastes and rich colors come to an end, but you will take the experiences home with you to linger over in your dreams.”

**NORTHWEST
LANDSCAPE &
STONE SUPPLY**

**Building and
Landscape Stone**

5883 Byrne Road
Burnaby, B.C. V5J 3J1
Ph: (604) 435-4842
Fax: (604) 436-9443
sales@landscapesupply.com
www.huckleberrystone.com

*Natural Stone
Adds Timeless
Elegance ...*







- Huckleberry Wallstone
- Huckleberry Steps & Risers
- Huckleberry Facing Stone
- Huckleberry Ledgestone
- Huckleberry Flagstone
- Huckleberry Boulders

**HUCKLEBERRY
STONE SUPPLY LTD.**

Locate a Dealer Near You

Creative Bricks & Blocks
North Vancouver (604) 984-3008

Island Stone Supply
Vancouver Island (250) 390-9115

Meadow's Landscape Supply
Pitt Meadows (604) 465-1311

But there are several other opportunities to network and celebrate, too. The awards luncheons and dinner will recognize the best work of professionals in our field.

There will be tradeshow exhibits where innovative products from the landscaping industry will be featured. And most exciting may be the Super Saturday extra event. Following a day of interdisciplinary workshops and programming, delegates will all come together to share ideas, network and socialize. This will be a rare opportunity for landscape architects to mix and mingle with planning professionals from the PIBC and CIP and architects from the AIBC and RAIC. The featured guest speaker for this evening will be the Right Honourable Adrienne Clarkson, former Governor General of Canada.

To help you arrange your schedule in advance, here is a peek at the calendar of social events for the conference. Please consult the website closer to the actual date to confirm exact time and locations. Plan to attend more than one!

GROUND BREAKER

Wednesday June 14th, 2006
5:15 - 7:30pm

Hyatt Regency Ballroom

Kick off the Shifting Ground Tradeshow and Conference by joining us at the Ground Breaker in the Ballroom of the Hyatt Regency. Come and mingle throughout the Exhibit hall with fellow delegates and tradeshow representatives. Taste some of the best that British Columbia has to offer! Roam through the tradeshow booths, checking out the newest products in the industry, and sample some of the most delicious wines, cheeses and appetizers that are typically B.C. Don't miss this chance to socialize with colleagues, and maybe win some prizes!

■ CSLA/BCSLA 2006 Awards of Excellence Luncheon

■ Council of Educators in

Landscape Architecture (CELA) Awards Luncheon

Thursday June 15th, 2006
Noon - 1:30pm

Hyatt Regency Vancouver

Two professional awards luncheons are offered for conference attendees who are members of these organizations:

1. The CSLA Awards recognizes the work done by landscape architects across Canada. The BCSLA Awards include our annual community service awards.
2. The CELA Awards recognize the work done by educators in landscape architecture.

CSLA Induction of New Fellows Awards Banquet

Thursday June 15th, 2006
7:00- 10:30pm

Hyatt Regency Vancouver

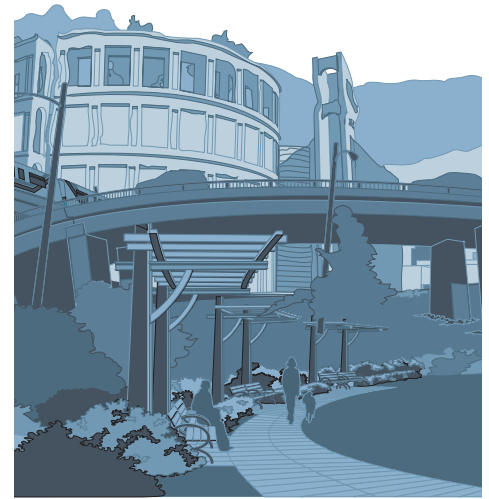
Join us for a fabulous formal dinner at the Hyatt Regency, one of Vancouver's finest hotels. This evening features the CSLA Induction of Fellows and Awards Banquet honouring outstanding CSLA members. A grand evening of celebration featuring beautiful music is planned to spotlight those who have contributed most to the profession.

Street Market Social Evening Gala

Friday June 16th, 2006
7:30- 11:30 pm

Vancouver Public Library

Set in the spectacular curved atrium of the Vancouver Public Library. Stroll through a delightful 'Street Market' and make a bid at the silent auction, a fund-raiser for the LACF. Take pleasure in the tastes, sights and sounds that make Vancouver the #1 place in the world to live. Have a drink and savour a host of fresh local organic foods created by Peake of Catering, Vancouver's most innovative catering company. Enjoy a night of extraordinary entertainment!



*Shifting Ground, poster detail,
design by Matt Warburton, Emdoubleyu Design*

Super Saturday Extra Event Gala Reception and Keynote Speaker

Saturday, June 17th, 2006
6:30 pm

Westin Bayshore Resort and Marina

Following a day of on-site and off-site interdisciplinary programs with the Planning Institute of BC, Canadian Institute of Planners, Architectural Institute of BC and the Royal Architectural Institute of Canada, relax at an evening reception in this world class resort hotel at the seaside of our beautiful city. This cocktail and appetizer social event will offer the best opportunity to mix and mingle with professionals from other disciplines.

Keynote speaker for the evening, the Right Honourable Adrienne Clarkson, former Governor General of Canada, will kick off a week of planning conferences that will culminate in the third United Nation's World Urban Forum.

Student Exhibition

BY KARIN ENGLAND LASA

The students of the Master of Landscape Architecture program at the University of British Columbia are pleased to be able to provide the opportunity for landscape architecture students from across the country to share their ideas and work through a public display.

This is not a design competition, but rather a collection of work from all corners of Landscape Architecture education. The intention of this display is to share with conference participants the diversity of work produced by landscape architecture students nationwide. We hope to catch the attention of delegates with a range of ideas and approaches to landscape architecture that represent a distinctly Canadian approach, and perhaps with a fresh viewpoint. This will ideally raise questions about similarities and differences in landscape design culture between the east and the west, and perhaps open our eyes to the increasing range of projects undertaken by students. It may also point us to new approaches to design, ways of collaborating, and idea sharing that could inspire others.

Participation in the Shifting Ground Student Display is an opportunity for students to make their ideas and ambitions known to a captive audience of professionals, colleagues and peers. By showcasing their creativity, thoughtful approach, and desire to push the boundaries of conventional practice, this is a chance for students to shake things up and encourage others to join them in thinking about design in the age of the new normal.

Student work will be displayed prominently at the conference venue for the duration of Shifting Ground. Don't miss out on this unique opportunity to connect with other students of landscape architecture and practitioners, and to highlight talents of Canadian landscape architecture students. Here's how to get your work displayed.

Submission Requirements

- There is no entry fee. This is not a competition, but rather an opportunity for students to showcase their work to a diverse group of practitioners, educators, related professionals and peers.

- Work can be that of an individual, group or multi-disciplinary team, but at least one author of the project must have been enrolled in a Canadian Landscape Architecture program in 2006.

- Submissions are to be printed posters, and are limited in size to a maximum of 3 - 24X 36 sheets per project, or equivalent. These may be oriented in any way (vertical or horizontal). Work may be mounted on foam core, but this is not required.

- Unfortunately, due to limitation on presentation space, no digital or 3-dimensional material will be accepted. Posters will not be returned.

- Submissions must be received by June 1, 2006. Please mail work to:

Landscape Architecture Program
Attn: Shifting Ground Student Display
#370 - 2357 Main Mall
University of British Columbia
Vancouver, BC V6T 1Z4

If you would like more information on the student display, please contact Karin England at englak@interchange.ubc.ca.

Sustainability by Design Regional Design Charrette

ONE OF THE SUPER SATURDAY 'ON SITE' EVENTS • JUNE 17, 2006 - 10:30- 5:00

Greater Vancouver's population is expected to double to almost four million people by 2050, which raises the question of how the region will accommodate such dramatic growth. How will housing, land use, jobs and transportation be designed, delivered and distributed? And how do we ensure continued livability in the lower mainland and the Fraser Valley?

Delegates/Participants are invited to join the UBC Design Centre for Sustainability (DCS) for a day-long design charrette that will produce a compelling visual representation of what Greater Vancouver region might look like in 2050, at a neighbourhood, district and region-wide scale.

Participants will create a series of urban and community designs, working from ortho-photo maps, various site conditions and core design principles. At end of session, completed panels will be displayed as a very large map of the Vancouver region during the United Nations World Urban Forum - Habitat +30. For a preview (UBC student test version), see:

<http://www.landfood.ubc.ca/urbanstudio/2005/overview.htm>

Check the Super Saturday website for details on registration for this and other events on Saturday, June 17th.

From Creation to Completion

To bring life to your vision and turn dreams into something tangible, let a Hunter irrigation system make it happen. An innovator and industry leader, Hunter has long been crafting water and energy efficient products that provide effective, reliable solutions for landscapes of all types and sizes.

On the journey to achievement, you handle the ends. Let Hunter take care of the means. For our full line of innovative irrigation products, call us for a FREE catalog.

Authorized Hunter Distributor
eljay Irrigation Ltd.

Alberta
 Calgary, 403-279-2425
 Lethbridge, 403-320-1600

Manitoba
 Winnipeg, 204-694-9442

Saskatchewan
 Saskatoon, 306-931-2440

British Columbia
 Burnaby, 604-420-2723
 Kelowna, 250-763-0037
 Saanichton, 250-544-0401
 Vernon, 250-503-0232

Hunter®

www.HunterIndustries.com/Designers.html
 Hunter "Spec Pro" Hotline: (800) 319-4796

35

introducing
 seven
 new
 products
 designed
 by
 frog

landscapeforms®

Martin Petersen, Danica Agencies
 604.987.7461 604.987.7924
 danicaagencies@shaw.ca

From PreHabitat 1976 to PostHabitat 2006 Canada's Initiatives in Achieving Sustainable Human Settlements

BY PETER OBERLANDER OC

History matters and history provides context.

Canada has a noble history of creative initiatives at the United Nations, urging member nations and the UN itself to frame and implement policies, programs and projects to improve urban living, within, beyond, and throughout settlements. Canada's foreign-policy initiatives through the UN usually parallel domestic goals. Domestic programs of improving city life are linked to comparable initiatives overseas and vice-versa. These reflect Canada's commitment to connect the natural and the built environment in its human settlements, thereby linking cause with effect to achieve an operative balance between public and market policies.

History reflects Canada's long-term commitments to mitigate the impact of rapid urbanization in a global network of cities. Canada has repeatedly recognized that the natural and built environments, particularly as they collide in urban communities, are interdependent and therefore interactive. It all started at the UN Conference on the Human Environment in Stockholm, in 1972, and continued through the UN Conference on Climate Change in Montreal, in 2005.

An IDRC research grant together with a

Western Economic Diversification contribution has enabled a research team at UBC/CHS to pursue the trajectory of Canada's initiatives over three decades. It is based on an agreed framework of criteria enabling the team to document, analyze and evaluate Canada's continuing urging for a United Nations' strategic commitment to improve urban life and to mitigate the impact of global urbanization. The Research Report will be presented at the World Urban Forum, in June 2006, thereby contributing to the theme: "Our Future: Sustainable Communities: Taking Ideas into Action". A special networking session is being set aside to consider Canada's continuing role within the UN Habitat framework and future WUF events and programs.

It will enable evaluation of policies initiated or supported by Canada, members of its civil society and the Academy. As background, it will trace the sequence of selected UN conferences, related meetings and their recommendations, resolutions, and declarations during the last three decades. It will include the 1976 UN Conference on Human Settlements, its preparations, the Conference itself, the Vancouver

Declaration, and the extensive follow-up through a variety of selected agencies.

The review will include Canada's membership in the UN Commission on Human Settlements and the establishment of the UN Centre for Human Settlements (UNCHS) in Nairobi.

Canada's international initiatives often paralleled domestic policies and programs, initially the creation of the Ministry of State for Urban Affairs MSUA, the continuing program responsibilities of CMHC and lately the Ministry of State for Infrastructure and Communities MSIC, as well as supporting the domestic and global research function of the Centre for Human Settlements at UBC.



Pre-Conference Workshop on Publishing

TUESDAY, JUNE 13, 2006

Join Elen Deming and Jim Palmer from the Landscape Journal for a session that addresses how to improve your ability to write for peer-reviewed publications. Both Deming and Palmer are members of the Faculty of Landscape Architecture at SUNY's College of Environmental Science and Forestry in Syracuse, New York, and their work as Co-Editors of the 'Landscape Journal' has provided them with an understanding of the 'publishing game' that includes not just authors, but reviewers and readers as well.

CELA first sponsored and underwrote the establishment of the Landscape Journal in 1982 to support and contribute to the system of peer-reviewed scholarship, and to encourage "the sharing of new information and thought in the many subject areas which support landscape design, planning and management of the land".

Workshop participants will talk about their own experiences, and strategies they have found helpful in the past; while the editors share their ideas, and encourage the group to discuss the future scope and mission of the Landscape Journal.

Shifting Ground Sponsors

Here is a preliminary list of sponsors who have already pledged their generous support for the conference. We encourage delegates to visit the trade show to find out about all the latest products and services offered by our sponsors.

Ground Breaker

T. Moscone & Bros. Landscaping Ltd.

Street Market Social

Holland Landscapers

Speakers

Metrix Professional Insurance Brokers & XL Insurance Co.

Phillips Farevaag Smallemberg

Breakfasts

Lumec Inc.

Nutrition Breaks

Deep Root Products Canada

Mumby Insurance Brokers Ltd.

Trade Show Exhibitors

Andrew Sheret Ltd.

Basalite Concrete Products

Cora Bike Rack (1986) Ltd.

Crozier Agencies/Rockcraft Designs

Deep Root Products Canada

Eljay Irrigation Ltd.

Frances Andrew Site Furnishings Ltd.

Landscape Forms/Danica Agencies

Leader International Corporation /

Fairweather Site Furnishings

Habitat Systems Incorporated

International Play Co.

Lumec Inc.

Marathon Athletic Surfaces

Mark Suttle Agencies Ltd.

Metrix Professional Insurance Brokers &

XL Insurance Co.

Mutual Materials

Nilex

Northwest Landscape Supply

Professional Publications Inc.

RecTec Industries Inc.

re:solve Software Solutions Inc.

Stream Organics

Soprema

Sudden Fun Recreation Equipment

Terasen Waterworks

Trex Decking and Railing

Waterplay Manufacturing Inc.

Westcoast Engineering Group Ltd.

Wishbone Industries Ltd.

Lanyard Sponsor

Habitat Systems Ltd.

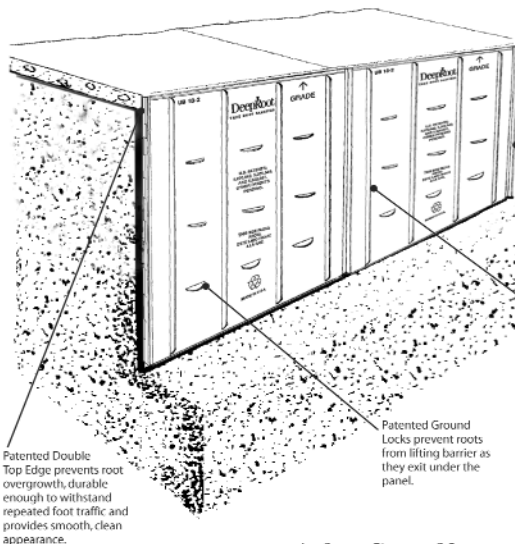
Delegate Bag Sponsor

Rain Bird International

Terasen Waterworks

Protect Your Hardscapes from Tree Root Damage

DeepRoot Root Barriers redirect tree roots down and away from surface hardscapes



PROTECT:

- Driveways
- Sidewalks
- Tennis Courts
- Foundations
 - Utilities
 - Pathways

Tree Pit and Tree Lawn Applications

ArborTie®

Tree Staking
Soft beaded weave polypropylene fabric prevents damage to treebark (900lb strength)



ArborGuard®



Protect Trees from weed wackers and mowers
ArborGuard Trunk Protector and Mulch Gard grows with the tree and allows aeration.

DeepRoot®
URBAN LANDSCAPE PRODUCTS

DeepRoot Products Canada, Inc.®
740 - 1190 Melville Street
Vancouver, B.C. V6E 3W1
Tel: 604.687.0899
Fax: 604.684.6744
Toll Free: 1/800.561.3883
mjames@deeproot.com

www.deeproot.com

Please call 800 561 3883 for your local Distributor

CSLA/CELA Schedule 2006

Please note: This is a draft schedule only and subject to change.
(April 2006)

SHIFTING GROUND

Landscape Architecture in the Age of the New Normal
L'architecture de paysage à l'ère de la Nouvelle Normale

MONDAY JUNE 12

4:00pm–8:00pm	CELA Board Meeting
---------------	--------------------

TUESDAY JUNE 13

9:00am–5:00pm	CELA Board Meeting
6:00pm–11:00pm	Trade Show Setup
1:00pm–5:00pm	Publishing Workshop (Landscape Journal)
4:00pm–6:00pm	Editorial Board
5:00pm–8:00pm	Registration Opens

WEDNESDAY JUNE 14

7:00am–8:30am	<i>Continental Breakfast</i>
7:30am–9:30am	ACLA
9:00am–10:00am	Keynote Speaker 1: Larry Beasley
10:15am–10:30am	<i>Coffee Break</i>
7:30am–5:00pm	CSLA Board Meeting
10:30am–12:15pm	Concurrent Sessions 1/1.1
12:15pm–1:15pm	<i>Lunch on your own</i>
1:15pm–3:00pm	Concurrent Sessions 2/2.1
3:00pm–3:15pm	<i>Coffee Break</i>
3:15pm–5:15pm	Concurrent Sessions 3/3.1
3:15pm–5:15pm	LASA Meeting
3:15pm–5:15pm	College of Fellows
5:15pm–7:30pm	"Ground" Breaker
7:30pm–9:00pm	Keynote Speaker 2: Julie Bargmann

THURSDAY JUNE 15

7:00am–8:30am	<i>Continental Breakfast</i>
7:30am–4:30pm	Registration
7:30am–5:00pm	Trade Show
7:30am–10:00am	LACF
8:30am–9:45am	Keynote Speaker 3: Leonie Sandercock
9:45am–10:00am	<i>Coffee Break</i>
10:00am–noon	CSLA Strategic Plan Workshop
10:00am–noon	Concurrent Sessions 4/4.1
noon–1:30pm	CELA Awards Luncheon
noon–1:30pm	CSLA/BCSLA Professional Awards Luncheon
1:45pm–3:15pm	Accreditation Council
2:00pm–3:15pm	Keynote Speaker 4: Mark Kingwell
3:15pm–3:30pm	<i>Coffee Break</i>
3:30pm–5:00pm	Concurrent Sessions 5/5.1
3:30pm–6:00pm	CSLA AGM
7:00pm–10:30pm	CSLA Banquet & Induction of Fellows

FRIDAY JUNE 16

7:00am–8:30am	<i>Continental Breakfast</i>
7:00am–8:30am	CELA Regional Meetings
7:30am–2:00pm	Registration
7:30am–5:00pm	Trade Show
8:45am–10:00am	Keynote Speaker 5: Tom Leader
10:00am–10:15am	<i>Coffee Break</i>
10:15am–noon	Poster session, Special panels, Book signings
noon–1:30pm	<i>Lunch on own</i>
1:30pm–3:00pm	CELA AGM
1:30pm–3:15pm	Concurrent Sessions 6/6.1
3:15pm–3:30pm	<i>Coffee Break</i>
3:30pm–5:00pm	Concurrent Sessions 7/7.1
5:30pm–6:30pm	Keynote Speaker 6: John Ralston Saul
7:30pm–11:30pm	Street Market Social

SATURDAY JUNE 17

8:00am–11:00am	CELA Academic Chairs Meeting
10:00am–6:00pm	Sustainability by Design Charrette
10:00am–10:00pm	Super Saturday
8:00am–noon	Trade Show Breakdown

SUNDAY JUNE 18

8:30am–noon	ROVE Session by LAAB
June 14–17	<i>AIBC/RAIC Conference</i>
June 16–21	<i>PIBC/CIP Conference</i>
June 19–23	<i>World Urban Forum</i>
June 12–13	<i>LARE Sitting</i>



BCSLA 2006 Calendar of Events

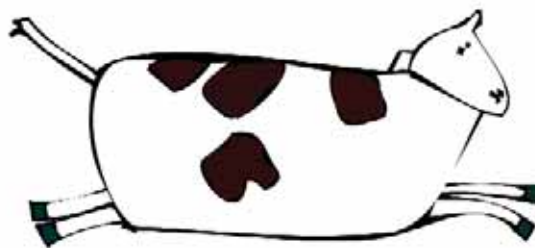
April 25	BCSLA Board of Directors Meeting
April 28	BCSLA Board of Examiners
May	BCSLA Nominations Committee Meeting
May 12	BCSLA Awards Nomination Deadline
May 23	BCSLA Board of Directors Meeting
June 12-13	Landscape Architectural Registration Exams, Vancouver, BC
June 14-17	RAIC/AIBC Festival of Architecture, Vancouver, BC
June 14-17	CSLA/CELA Conference – Shifting Ground, Vancouver, BC
June 17	Super Saturday, Vancouver, BC
June 17-21	2006 CIP/PIBC Conference - World Planners Congress, Vancouver, BC
June 19-23	UN World Urban Forum, Vancouver, BC
June 27	BCSLA Board of Directors Meeting
July 25	BCSLA Board of Directors Meeting
July 31	BCSLA Membership Application Deadline
August	BCSLA Credentials Committee Meeting
August	C/LARE (Computerized Landscape Architectural Exams)
Sept. 7-9	CLARB Annual General Meeting, San Antonio, TX
Sept. 20-21	BCLNA CanWest Hort Show, Vancouver, BC
September 23	BCSLA Board of Directors Meeting
October 3-4	C/LARE Administration
October 6-10	ASLA AGM and Expo/IFLA World Congress, Minneapolis, MN
October 13	Landscape Architectural Registration Exams (LARE) Candidate Order Deadline: December 2006 Sitting
October 4	BCSLA Board of Directors Meeting
October	BCSLA Board of Examiners Fall Sitting
October 31	2007 Sitelines Annual Update Submissions
November	BC Landscape and Nursery Association AGM
November 28	BCSLA Board of Directors Meeting



T.R. TRADES REPRODUCTIONS LTD. ANNOUNCES THE STATE-OF-THE-ART IN COLOUR LASER TECHNOLOGY

**MAXIMUM RESOLUTION: 2400 X 2400 DPI
MAXIMUM SPEED: 50 COPIES PER MINUTE
MAXIMUM SHEET SIZE: 13" X 19"
MAXIMUM PAPER WEIGHT: 110 LB. COVER
MAXIMUM INFO: INFO@TRTRADES.COM**

* UNFORTUNATELY, THERE IS NO WAY TO CONVEY THE QUALITY OF THIS DEVICE IN A BLACK & WHITE AD, SO WE THOUGHT WE WOULD SHOW YOU THIS CUTE PICTURE OF A COW INSTEAD.



1744 WEST 4TH AVENUE AT BURRARD PHONE (604) 736-4571 FAX (604) 736-4562



BRITISH COLUMBIA SOCIETY
OF LANDSCAPE ARCHITECTS

Award Categories: BCSLA Community Service Awards

Five awards are offered, one from each of the following categories:

- 1. THE INDIVIDUAL AWARD:** recognizing an individual or couple who have, in their day to day activities, made the landscape of our world a more delightful and better place to live whether it be in their creation of a small garden that many people enjoy or in their campaign to preserve a portion of our environment.
- 2. THE Q'PANGO AWARD:** recognizing a Quasi-Public Agency or Non-Governmental Organization that has made major contributions to our local, provincial or national landscapes through its advocacy – its policy, design-planning or conservation initiatives.
- 3. THE PUBLIC SERVANT- PUBLIC AGENCY AWARD:** thanking an individual who or an agency that has made major advances in the design, planning and management of place, has demonstrated innovation in that work, and has shown respect for and consideration of the landscape architecture profession.
- 4. THE CONTRACTOR AWARD:** presented to a contracting firm that, in the opinion of the profession, has done an outstanding job of bringing one or several important projects to completion or, has consistently demonstrated a high quality of professionalism, workmanship and pride in their work.
- 5. THE CORPORATE AWARD:** recognizing a corporation that has consistently provided a high quality environment as part of its everyday activities. The corporation could be a developer, a major business, or even a small business that has done an outstanding job of integrating their business activities and facilities into the fabric of our city or countryside.

With respect to the selection of these awards please note some of the following conditions:

- It is the intention of the Society to make awards only when there are suitable and significant candidates.
- The awards will be made across all regions of the province. As such, in any given year at least one award will be made representing the Vancouver Island region and one award will be made representing the Interior. In addition, the Society will seek worthy candidates from other regions of the province.
- Where two worthy candidates exist in one category and no candidate has been nominated in another category, the Society may consider both of those candidates for awards in the same year.

The Awards offers BCSLA Members a unique opportunity to recognize and honour our “best citizens”. Put your thinking caps on and give us your best advice. If you submitted a candidate’s name last year you may wish to consider resubmitting. Each submission should be accompanied by a one-page description on why you believe the candidate deserves the award. The information will also be used for media releases.

The BCSLA Awards Luncheon is slated for June 15, 2006 with the CSLA Professional Awards from 12:00 pm to 1:30 pm in conjunction with the 2006 CSLA/CELA Conference that is being hosted by BCSLA.

Mark Vaughan, Past President and Nominations Committee Chair, is tasked with organizing all BCSLA awards. Please return completed forms to by May 12, 2006.

BCSLA
#110, 355 Burrard Street
Vancouver, BC V6C 2G8

Creating Solutions Building Partnerships



U-Series Spray Nozzles

The patented U-Series nozzle is the first plastic nozzle with a second orifice for close-in watering and more uniform water distribution. Its unique patented design cuts watering times, saves water and money, and reduces waste. U-Series nozzles fit all Rain Bird sprinklers and shrub adapters and can be used with new and improved PCS screens.



Rain Bird U-Series and MPR Spray Head nozzles are now colour-coded on the top to enhance your productivity. Now it's easier to sort, organize, and install with Top Colour-coded nozzles.

Contact your local Terasen Waterworks branch for more information*.



Install Confidence.
Install Rain Bird.

Abbotsford
1-800-538-2084

Courtenay
1-888-567-7473

Kelowna
1-800-667-2343

Vernon
1-800-461-9987

Edmonton
1-888-232-9411

Red Deer
1-866-343-8257

Cloverdale
1-800-665-2134

Duncan
1-800-366-0333

Langford
1-888-474-3980

Victoria
1-800-561-0989

Grande Prairie
780-513-5010

Coquitlam
604-524-6691

Kamloops
1-800-284-6480

Richmond
1-800-667-2445

Calgary
1-800-242-3176

Lethbridge
403-327-9132

www.terasen.com

*Rain Bird golf products are only available at our BC locations.



MUTUAL MATERIALS™
Trusted Since 1900

Environmentally- Sound Choices

SF Rima®



Uni-Ecoloc



Unlike traditional asphalt or concrete, permeable pavers allow rainwater to return naturally into the ground below, reducing the concerns associated with stormwater runoff, including erosion and pollution.

For more information about Mutual Materials products or services, or to schedule a product presentation please call 888-816-2111. Visit us online at www.mutualmaterials.com.

SF Rima® is a registered trademark of SF Concrete Technology.

